



CITY OF SOUTH BEND JAMES MUELLER, MAYOR  
**DEPARTMENT OF PUBLIC WORKS**  
ERIC HORVATH, DIRECTOR

July 2, 2024

Via Email to: [aweinzap@idem.IN.gov](mailto:aweinzap@idem.IN.gov)

Adam Weinzapfel  
IDEM – Office of Land Quality  
Solid Waste Permits Section  
100 North Senate Avenue  
Indianapolis, IN 46204

RE: 2024 2<sup>nd</sup> Quarter Methane Monitoring Well Report - Organic Resources Facility, 4340 Trade Drive, South Bend, IN 46628

Dear Adam:

As required by the City of South Bend's *Plan for Closure/Post Closure of Biosolids Lagoon No. 4*, approved by IDEM on May 27, 1997, regarding Agreed Order Cause Nos. SW-237 & B-1645, please find the enclosed methane monitoring data.

Quarterly methane monitoring was performed June 18, 2024, at all methane monitoring probes, methane vents, and the Organic Resources building. No exceedances of the LEL for methane were detected during second quarter monitoring at any methane probes or the Organic Resource building.

This report is to serve as the report for the 2<sup>nd</sup> Quarter 2024.

Sincerely,

Andrea Alexander  
Director of Environmental Compliance

Cc: Troy Weaver, IDEM  
Kim Thompson, City of South Bend  
File

Enclosure(s) 2<sup>nd</sup> Quarter 2024 Monitoring Methane Monitoring Report  
Summary Table of all Monitoring Data  
Site map

Report Name: Methane Monitoring

	GMWA-1 West	GMWA-2 East	MMW #3	MMW #4	MMW #5	MMW #8	MMW #9	MMW #10	MMW #11	MMW #12	MMW #13	LGV-1	EGV-1	EGV-2	EGV-3	EGV-4	EGV-5	OR Building	TR-1	TR-2	TR-3	V-1	V-2	V-3	V-4
	% LEL (%)	% LEL (%)	% LEL (%)	% LEL (%)	% LEL (%)	% LEL (%)	% LEL (%)	% LEL (%)	% LEL (%)	% LEL (%)	%LEL (%)	% LEL (%)	% LEL (%)	% LEL (%)	% LEL (%)	% LEL (%)	% LEL (%)	% LEL (%)	% LEL (%)	% LEL (%)	% LEL (%)	% LEL (%)	% LEL (%)	% LEL (%)	% LEL (%)
6/18/24	0	0	0	76	0	0	0	0	0	0	0	736	28	0	0	18	0	0	0	0	0	0	8	0	0

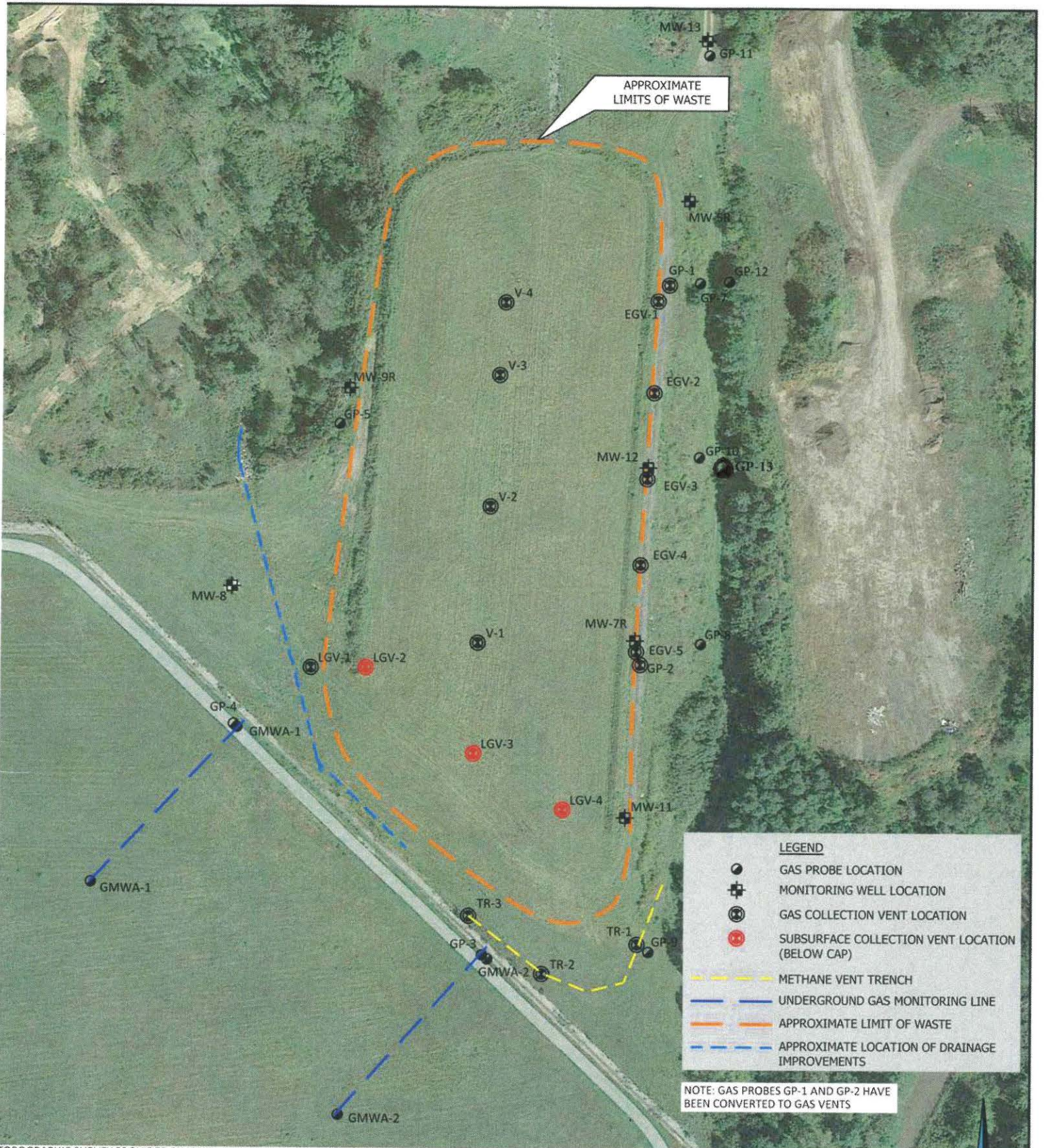




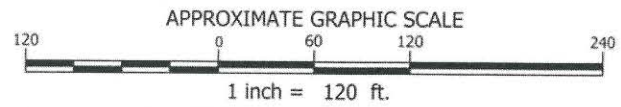








TOPOGRAPHIC SURVEY PROVIDED BY JONES, PETRIE, RAFINSKI, LOCATED IN SOUTH BEND, INDIANA. DATE OF SURVEY NOVEMBER 2016.  
 SOURCE: LOCATIONS OF HISTORIC PROBES, VENTS, WELLS AND TRENCHES ADAPTED FROM MAP BY KERAMIDA, DATED JUNE 2016.  
 SOURCE: IMAGE ADAPTED FROM GOOGLE EARTH IMAGERY DATED SEPTEMBER 2015.  
 COPYRIGHT © 2016 WEAVER CONSULTANTS GROUP. ALL RIGHTS RESERVED.



PREPARED FOR:  
 CITY OF SOUTH BEND

**APPROXIMATE GAS PROBE LOCATION MAP**  
 ORGANIC RESOURCE CENTER  
 CLOSED BIOSOLIDS LANDFILL - LAGOON #4  
 SOUTH BEND, IN

REUSE OF DOCUMENTS  
 THIS DOCUMENT, AND THE DESIGNS INCORPORATED HEREIN, AS AN INSTRUMENT OF PROFESSIONAL SERVICE, IS THE PROPERTY OF WEAVER CONSULTANTS GROUP, AND IS NOT TO BE USED IN WHOLE OR IN PART, WITHOUT THE WRITTEN PERMISSION OF WEAVER CONSULTANTS GROUP.

**Weaver  
 Consultants  
 Group**  
 GRANGER, INDIANA  
 (574) 771-2447 [www.wcgroup.com](http://www.wcgroup.com)

DRAWN BY: JCN
REVIEWED BY: AEM
DATE: 7/27/2017
FILE: 0058-300-DWG
CAD: SBB000007.dwg

**FIGURE 1**