

# **Attachment G**

## **Contingency Plan**

## TABLE OF CONTENTS – ATTACHMENT G

<b>G. CONTINGENCY PLAN</b> .....	<b>1</b>
G-1 General Information .....	1
G-2 Emergency Coordinators .....	2
G-3 Implementation.....	2
G-4 Emergency Actions .....	2
G-4a Notification .....	3
G-4b Identification of Hazardous Materials .....	3
G-4c Assessment.....	3
G-4d Control Procedures.....	3
G-4e Prevention of Recurrence or Spread of Fires, Explosions, or Releases.....	4
G-4f Storage and Treatment of Released Material.....	4
G-4g Incompatible Waste .....	4
G-4h Post-Emergency Equipment Maintenance.....	4
G-4i Container Spills and Leakage .....	4
G-4j Tank Spills and Leakage.....	5
G-4k Surface Impoundment Spills and Leakage .....	5
G-4l Containment Building Leaks .....	5
G-5 Emergency Equipment .....	5
G-6 Coordination Agreements.....	5
G-7 Evacuation Plan.....	5
G-8 Required Reports .....	5

## G. CONTINGENCY PLAN

This attachment addresses the requirements of 40 CFR 270.14(b)(7) and 329 IAC 3.1-13-1, which specify that the Part B Application contain a Contingency Plan that addresses the facilities for which a hazardous waste permit is sought. Accordingly, process-specific material presented in this attachment pertains to the Greenbelt II Landfill. The Hazardous Waste Contingency Plan is maintained at the Midwest Plant Environmental Control Department Office and a copy is provided at **Appendix G-1**. The revision date of the HWCP included in **Appendix G-1** is September 28, 2023. Members of the Environmental Control Department staff have the authority to amend the Hazardous Waste Contingency Plan (HWCP) on an as needed basis. Emergencies involving F006 waste are strictly defined in the HWCP.

### G-1 General Information

#### Facility Name and Address:

United States Steel Corporation  
Midwest Plant  
6300 U.S. Highway 12  
Portage, IN 46368

#### Operator Name and Address:

United States Steel Corporation  
600 Grant Street  
Pittsburgh, PA 15219

The Greenbelt II Landfill currently serves as an option for the disposal of wastewater treatment plant filter cake (EPA Hazardous Waste No. F006). The Greenbelt II Landfill is rectangular in shape and, when completed, it will be approximately 1150 feet long and 750 feet wide. The facility sits essentially above ground (approximate elevation 602.5) and has moderately sloped side slopes. If all landfill cells are developed, the peak of the landfill will be at the center of the landfill at an approximate elevation of 678. The active cell areas are graded to drain to the inner portions of the landfill where runoff from the active area is conveyed via pumping station and piping that is part of the facility's NPDES-permitted wastewater treatment system. Details of the runoff management system are discussed in Appendix D of the Permit and are depicted in Sheets

14-17 of the Permit. This piping transports runoff from the active area of the landfill to the Chrome Treatment Plant.

## **G-2 Emergency Coordinators**

The Emergency Coordinators are familiar with the facility's HWCP, operations and activities at the facility, the location and characteristics of hazardous waste generated, the location of records within the facility, and the facility layout. The Emergency Coordinators are responsible for coordinating emergency response measures and have the authority to commit the resources required for implementation of the HWCP. Duties of the Emergency Coordinators are described below, as well as within the HWCP in **Appendix G-1**. The names, designations, titles, addresses, and phone numbers of the Incident Commanders/Emergency Coordinators are provided in Table 1 of the HWCP. In addition, 24-hr. emergency phone numbers of the USS Security & Fire Services are included in the HWCP contained in **Appendix G-1**.

The Emergency Personnel listed in the HWCP are available to respond to a facility emergency 7 days a week, 24 hours a day. In Section 4 within the HWCP, alternate emergency coordinators are listed in the order in which they will assume responsibilities as alternates. The USS Security & Fire Services are to be contacted first, followed by the Environmental Coordinator, if the primary Emergency Coordinators cannot be reached.

## **G-3 Implementation**

The HWPC will be implemented in the event of an actual emergency situation involving hazardous waste F006, as defined in the HWCP.

## **G-4 Emergency Actions**

The possibility of a fire or explosion involving hazardous waste at the Greenbelt II Landfill is remote. As mentioned previously, the primary hazardous waste managed at the Greenbelt II Landfill is wastewater treatment plant filter cake (F006). In addition, nonhazardous industrial wastes may be disposed of in the Greenbelt II Landfill. None of these wastes are flammable. The only conceivable possibility of a fire in the vicinity of the Greenbelt II Landfill would be associated with an equipment fire during transport or solidification activities at the landfill. Implementation and notification procedures are detailed in the HWCP.

#### *G-4a Notification*

Telephones are available to provide voice contact with all other telephones on the permittee's telephone network. The telephone system is used daily, and mechanical difficulties are promptly repaired. Plant telephones located throughout the plant, are capable of providing voice contact to any outside party, including emergency response and regulatory agencies, plant emergency response personnel, and other off-site personnel that may require notification in the event of an emergency.

Management and supervisory personnel are provided with cellular telephones and/or radios to allow communications when they are out of their offices. When on the landfill, personnel are required to have access to a two-way radio and/or a cellular telephone, which can be used to provide immediate emergency instruction to facility personnel.

#### *G-4b Identification of Hazardous Materials*

Because the Greenbelt II Landfill may receive one hazardous waste (EPA Hazardous Waste No. F006), special steps are not necessary to identify spilled material. Any spilled hazardous waste material would be F006. By observation and conversations with involved personnel, the Incident Commander or Alternate will identify the character, source, amount, and extent of released materials.

#### *G-4c Assessment*

In the event of an emergency, the Incident Commander or Alternate is responsible for assessing possible hazards to the environment and human health and notifying appropriate personnel of the incident, as required. The Incident Commander or Alternate is a trained professional who upon review of the emergency, shall direct the responses to the emergency.

#### *G-4d Control Procedures*

The following general guidelines are followed, in the event of a fire, explosion, or release involving hazardous waste at the Greenbelt II Landfill.

The Environmental Coordinator is to be notified if hazardous waste spills occur. Incidental spills are to be cleaned up immediately in accordance with the permittee's internal spill guidance (under OSHA, incidental spills of hazardous materials or waste may be cleaned up by area personnel who have a working knowledge of the material spilled). Dependent upon the nature of

the spill, the Environmental Control Department may implement and oversee the cleanup of larger scale spills.

General guidelines discussed above in Sections G-3 and G-4 shall be followed in the event of a fire at the Greenbelt II Landfill.

*G-4e Prevention of Recurrence or Spread of Fires, Explosions, or Releases*

After responding to an emergency incident, the responders and supporting personnel will investigate to assess the cause of the incident. The identified causative agent will be removed from the vicinity of the Greenbelt II Landfill if the possibility of reignition exists. If the causative agent (e.g., bulldozer engine fire) was in the active area of the Greenbelt II Landfill, it will be removed from the active portion of the landfill for decontamination, as needed. Appropriate actions (e.g., exclusion from the landfill of the causative agent, more frequent equipment maintenance) to prevent its recurrence will be developed. Personnel involved with the handling, transport, and placement of hazardous materials into the Greenbelt II Landfill will be informed of the resultant actions when it impacts their operations. Changes in operating protocol or procedures resulting from this investigation will be documented.

*G-4f Storage and Treatment of Released Material*

Spilled or otherwise contaminated material approved for placement in the Greenbelt II Landfill, which complies with the BDAT LDR treatment standards, as applicable, may be disposed in the Greenbelt II Landfill.

*G-4g Incompatible Waste*

As described in Attachment C of the Permit, no incompatible wastes will be disposed of in the Greenbelt II Landfill, therefore this section is not applicable.

*G-4h Post-Emergency Equipment Maintenance*

After being used in response to an emergency, the equipment will be inspected by the Emergency Coordinator, or his designee to verify that it is fit for future use.

*G-4i Container Spills and Leakage*

Containers used to treat/store hazardous waste are not included in this Permit pertaining to the Greenbelt II Landfill. Therefore, this section is not applicable.

*G-4j Tank Spills and Leakage*

No hazardous wastes are managed in tanks for greater than 90 days at the Greenbelt II Landfill. Therefore, Sections G-4j(1) through (5) are not applicable.

*G-4k Surface Impoundment Spills and Leakage*

Since this hazardous waste permit pertaining to the Greenbelt II Landfill does not include hazardous waste storage or disposal in a surface impoundment, Sections G-4k(1) through (3) are not applicable.

*G-4l Containment Building Leaks*

Since this hazardous waste permit pertaining to the Greenbelt II Landfill does not include hazardous waste containment buildings, Sections G-4l(1) and (2) are not applicable.

**G-5 Emergency Equipment**

The emergency equipment available to the permittee is described in the HWCP in **Appendix G-1** in Section 6.

**G-6 Coordination Agreements**

Agreements the permittee has in place with local emergency services and agencies are documented in the HWCP in **Appendix G-1** in Appendix 5 and Appendix 6.

**G-7 Evacuation Plan**

The hazardous waste materials are inorganic filter cake/sludges (F006) solidified/stabilized with fly ash. The properties of the filter cake and fly ash are such that the materials in the landfills will not burn, explode, or produce poisonous gases. In accordance with 40 CFR 264.52(f) and 329 IAC 3.1-9-1 an evacuation plan is included in the HWCP at **Appendix G-1** in Section 5.5.

**G-8 Required Reports**

If an incident that requires implementation of the HWCP occurs, the Environmental Control Department is responsible for ensuring that the date, time, and details of the incident are recorded in the plant operating record. The National Response Center, Commissioner of IDEM and/or appropriate local authorities will be notified, if required.

Within fifteen days of the notification of a statutory reportable incident, the Environmental Control Department will submit a written report describing the incident to IDEM at the address below:

Commissioner  
State of Indiana  
Department of Environmental Management  
100 North Senate Ave.  
Indianapolis, IN 46204

This written report will include the following, as specified by 40 CFR 264.56(j) and 329 IAC 3.1-9-1:

1. Name, address, and telephone number of the owner or operator;
2. Name, address, and telephone number of the facility;
3. Date, time, and nature of incident (e.g., fire, release);
4. Name and estimated quantity of material(s) involved;
5. Extent of injuries, if any;
6. Assessment of actual or potential hazards to human health or the environment, where applicable; and
7. Estimated quantity and disposition of recovered material.



**APPENDIX G-1**  
**Hazardous Waste Contingency Plan**



**United States Steel Corporation - Midwest Plant  
6300 U.S. Highway 12  
Portage, Indiana 46368  
HWM Permit No. INR000109017**

**HAZARDOUS WASTE CONTINGENCY PLAN – QUICK REFERENCE GUIDE  
AND  
HAZARDOUS WASTE CONTINGENCY PLAN**

**Revision Date: 28 September 2023**

---

**Distribution List**

**HW Contingency Plan Quick Reference Guide & HW Contingency Plan**  
(All distribution copies are in hardcopy format unless otherwise stated.)

- USS MW Fire & Security Services
- USS MW Environmental Coordinator
- USS Environmental Control Network Drive (electronic copy)
- Portage Fire Department
- Porter County – Local Emergency Planning Committee (LEPC)
- HW Management Permit (RCRA Part B Permit) [via permit mod]

---

**Quick Reference Guide  
to the  
Hazardous Waste Contingency Plan  
40 CFR 262.262(b)**



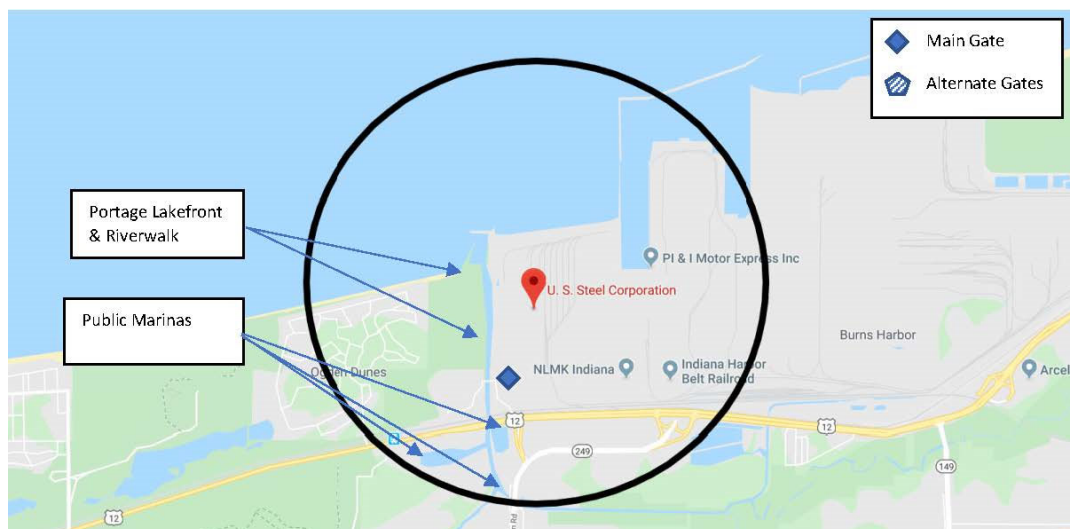
### Qualified Emergency Coordinators [40 CFR 262.262(b)(8)]

For emergency assistance at the site, please contact one of the coordinators listed below:

Qualified Emergency Coordinators (40 CFR 262.262(b)(8))	
Role	24-hr Emergency Number(s)
USS Security & Fire Services	(219) 763-5911 (219) 763-5650 (219) 888-4511
Environmental Coordinator	(219) 763-5151

### One Mile Radius Location Map and Directions [40 CFR 262.262(b)(5)]

The area within an approximate 1-mile radius of U.S. Steel Midwest Plant (see map below) contains primarily industrial and manufacturing plants, several marinas located along the East Arm Little Calumet River, and Portage Lakefront and Riverwalk, which constitutes a portion of Indiana Dunes National Park. No schools are located near the plant. Based on the types of materials and locations in which they are stored, there is no foreseeable need for evacuation of the plant or local community; no evacuation plan is included in this quick reference guide. However, there are general plant evacuation procedures and maps in the Contingency Plan document. There is one main gate at the plant as indicated on the map.





**Quick Reference Guide - Hazardous Waste Contingency Plan**

**40 CFR 262.262(b)**

**U.S. Steel – Midwest Plant – EPA ID# INR000109017**

**Directions to the Main Gate at the Facility (40 CFR 262.262(b)(5))**

<b>Facility Address</b>	<b>From the Northwest</b>	<b>From the Northeast</b>	<b>From the Southwest</b>	<b>From the Southeast</b>
6300 US Hwy 12 Portage, Indiana 46368	Take I-94 E toward Detroit. Take exit 19 for IN-249 toward Port of Indiana / Portage. Continue on IN-249; turn left onto Midwest Highway and follow signs for US Steel plant.	Take I-94 W toward Chicago. Take exit 19 for IN-249 toward Port of Indiana / Portage. Continue on IN-249; turn left onto Midwest Highway and follow signs for US Steel plant.	Take I-65 N to I-80 E/I-94 E. Take exit 19 for IN-249 toward Port of Indiana / Portage. Continue on IN-249; turn left onto Midwest Highway and follow signs for US Steel plant.	Get on I-94 W toward Chicago. Take exit 19 for IN-249 toward Port of Indiana / Portage. Continue on IN-249; turn left onto Midwest Highway and follow signs for US Steel plant.

The facility has the following alarm systems:

**Alarm Systems (40 CFR 262.262(b)(7))**

<b>System</b>	<b>Type</b>	<b>Location</b>
Fire Alarm	Audible Alarm	Sitewide
Femco Public Address System	Audible Public Address System	Sitewide

**Quick Reference Guide Revisions [40 CFR 262.262(c)]**

Whenever the contingency plan is amended or revised, this quick reference guide must also be updated. The quick reference guide and the contingency plan must be submitted with each update.

This guide is maintained and located with the contingency plan document (herein) for quick reference.



### Hazardous Waste List [40 CFR 262.262(b)(1),(2)&(3)]

The following hazardous waste may be present onsite at any one time:

Hazardous Waste Types and Generation					
Hazardous Waste Name	Hazard Class / Waste Code	Point of Generation and/or Storage Location	Estimated Max Onsite (tons)	Response Notes	Special Notes to Hospital/Treatment Personnel ERG Numbers
Chromic Acid Solution	Corrosive (D002 acid) Toxic (D007 chromium and D008 lead)	Nos. 2 & 3 Galvanizing Lines, Tin Line and Chrome Line	89		ERG 154
Chrome Debris & Sludge	Toxic (F006 chromium)	Nos. 2 & 3 Galvanizing Lines, Tin Line and Chrome Line	5		ERG 171
Chromic Acid Debris & Solids	Toxic (D007 chromium)	Nos. 2 & 3 Galvanizing Lines and Tin Line	2		ERG 171
Tin Plating Sludge	Corrosive (D002 acid) Toxic (D007 chromium and D008 lead)	Tin Line	1		ERG 151, 171
Corrosive Liquids	Corrosive (D002 acids and caustics) Toxic (D004 arsenic, D007 chromium, and D008 lead)	Tin Line, Chrome Line, Continuous Anneal, Cleaner Line, Nos. 2 & 3 Galvanizing Lines, Pretreat, Final Treat and Chem Lab	5	Acidic and caustic liquids	ERG 157
Aerosols	Ignitable/flammable (D001 various solvents and D035 MEK)	All Maintenance Shops and Areas	3		ERG 126
Paint Related Materials	Ignitable/flammable (D001 various paints and solvents)	Ubiquitous	0.3		ERG 128, 132
Roll Shop Swarf	Toxic (D007 chromium)	Roll Shop	11		ERG 171
Toxic Liquids (Other)	Toxic (D007 chromium)	Ubiquitous	3		ERG 154



Quick Reference Guide - Hazardous Waste Contingency Plan

40 CFR 262.262(b)

U.S. Steel – Midwest Plant – EPA ID# INR000109017

---

## MAPS

**Hazardous Waste Storage Locations (40 CFR 262.262(b)(4))**

**Fire Hydrant and Water Source Locations [40 CFR 262.262(B)(6)]**





**Table 1**  
**U. S. Steel Corporation – Midwest Plant**  
**Hazardous Waste Contingency Plan**  
**List of Emergency Personnel**

<b>Designation</b>	<b>Name/Title</b>	<b>Phone Numbers</b>	<b>Home Address</b>
Primary Incident Commander	Jacob Bell Manager – Security & Fire	Office (219) 888-2928 Mobile (412) 335-2887	12592 Pennsylvania PL Crown Point, IN 46307
Alternate Incident Commander	John Blumer Supervisor III – Security & Fire	Office (219)888-1896 Mobile (219) 241-4768	102 Michigan St Porter, IN 46304
Alternate Incident Commander	Michael Moskalick Supervisor II – Security & Fire	Office (219) 888-5429 Mobile (219) 689-8387	728 Keel PL Porter, IN 46304
Primary Environmental Coordinator	Timothy Sullivan Coordinator, Environmental	Office (219) 763-5022 Mobile (219) 306-1197	2102 Shallowford Drive Valparaiso, IN 46383
Alternate Environmental Coordinator	Joe Hanning Manager - Environmental	Office (219) 888-4500 Mobile (412) 952-0474	4106 Hemlock Dr. Valparaiso, IN 46383
Plan Administrator	Timothy Sullivan Coordinator, Environmental	Office (219) 763-5022 Mobile (219) 306-1197	2102 Shallowford Drive Valparaiso, IN 46383

**ALL EMERGENCIES: Contact USS Security & Fire Services 24 hours/day (219) 763-5911**  
**USS Security & Fire Services will contact Emergency Personnel as necessary.**

---

# **Hazardous Waste Contingency Plan**

---

## Hazardous Waste Contingency Plan Contents

Section	Page	
1.0	APPLICABILITY, PURPOSE AND IMPLEMENTATION [262.260]	
2.0	DESCRIPTION OF FACILITIES	
2.1	Plant Location and Site Description .....	1
2.2	Hazardous Waste Generation and Disposal .....	1
3.0	PLAN ADMINISTRATION AND REVISIONS [262.262(A) & 262.263]	
4.0	EMERGENCY PERSONNEL [262.264]	
4.1	Incident Commander [Qualified Emergency Coordinator].....	3
4.2	Environmental Coordinator [Environmental Control Representative].....	4
5.0	EMERGENCY PROCEDURES [262.265]	
5.1	Definition of Spill .....	4
5.1.1	Non-Emergency Spill	
5.1.2	Environmental Emergency Spill	
5.2	First Observer .....	5
5.3	Incident Commander .....	5
5.4	Environmental Coordinator [Environmental Control Representative].....	7
5.5	Evacuation Plan [242.261(f)].....	8
6.0	EMERGENCY SERVICES AND EQUIPMENT [262.261 (C)&(E)]	
6.1	Plant Security.....	9
6.2	Fire Fighting Personnel and Equipment [262.252(c)&(d)].....	9
6.3	Medical and Ambulance Services .....	9
6.4	Outside Spill Response Contractor and Equipment.....	10
6.5	Plant Spill Response Equipment.....	10
6.6	Personal Protective Equipment.....	10
6.7	Communications Equipment [262.252(a)&(b)] .....	10
6.7.1	Internal Communications	
6.7.2	Radios and Cellular Telephones	
6.7.3	Emergency Notification System	
6.8	Emergency Service Organization and Providers .....	11

Site Maps

Emergency Equipment

---

---

## **1.0 APPLICABILITY, PURPOSE AND IMPLEMENTATION [262.260]**

This document has been prepared to serve as the Hazardous Waste Contingency Plan for U.S. Steel - Midwest Plant in accordance with the requirements specified at 40 CFR 262.261 and Indiana Rule 329 IAC 3.1. This Plan is designed to minimize hazards to human health or the environment from fires, explosions involving hazardous waste or any unplanned sudden or non-sudden release of hazardous waste or hazardous waste constituents to air, soil or surface water and is to be implemented immediately in the event of such an occurrence.

## **2.0 DESCRIPTION OF FACILITIES**

### **2.1 Plant Location and Site Description**

U.S. Steel - Midwest Plant (Midwest) is a steel coil finishing facility with pickling, cold rolling, annealing, coating and electroplating operations. It is located within the boundaries of the city of Portage in northwestern Porter County, Indiana. Surrounding land use is industrial and railroad right-of-way. The site is a relatively flat area and has been extensively modified for industrial activity. A private security force hired by Midwest provides security for the site. All incoming traffic is checked at the plant entrance gate and visitors are required to register before entering the plant. A site map is provided in Appendix 1 and in the Quick Reference Guide at the front of this binder.

### **2.2 Hazardous Waste Generation and Disposal**

Spent phosphate solution (D002), spent chem treat solution (D007), and chrome contaminated debris (D007) are generated at the No. 2 Galvanizing Line. The No. 3 Galvanizing Line generates spent acrylic waste (D007) and chrome contaminated debris (D007). Chrome contaminated debris is also generated at the Chrome Line and the Tin Line. Spent chromic acid (D007) is generated at the Chrome Line. The Chem Lab generates mercuric nitrate (D009). Chrome contaminated swarf and filter media (D007) are generated at the Roll Shop. Swarf may also be recycled at the Gary Works Sinter Plant. Chrome contaminated filter cake is generated at the Chrome Wastewater Treatment Plant (F006). There are also various flammable wastes (D001) generated throughout the facility. See Table 2 for a list of all wastes generated onsite. All of these routinely generated hazardous waste streams, except F006, are shipped off-site to

---

permitted treatment, storage or disposal (TSD) facilities. The facility has the option to dispose of F006 offsite or onsite.

The table below presents the hazardous waste streams generated at the Midwest Plant. The locations of the hazardous waste generation and management areas are provided on the site maps in Appendix 1.

Hazardous Waste Name	Hazard Class / Waste Code	Point of Generation and/or Storage Location	Estimated Max Onsite (tons)
Chromic Acid Solution	Corrosive (D002 acid) Toxic (D007 chromium and D008 lead)	Nos. 2 & 3 Galvanizing Lines, Tin Line and Chrome Line	89
Chrome Debris & Sludge	Toxic (F006 chromium)	Nos. 2 & 3 Galvanizing Lines, Tin Line and Chrome Line	5
Chromic Acid Debris & Solids	Toxic (D007 chromium)	Nos. 2 & 3 Galvanizing Lines and Tin Line	2
Tin Plating Sludge	Corrosive (D002 acid) Toxic (D007 chromium and D008 lead)	Tin Line	1
Corrosive Liquids	Corrosive (D002 acids and caustics) Toxic (D004 arsenic, D007 chromium, and D008 lead)	Tin Line, Chrome Line, Continuous Anneal, Cleaner Line, Nos. 2 & 3 Galvanizing Lines, Pretreat, Final Treat and Chem Lab	5
Aerosols	Ignitable/flammable (D001 various solvents and D035 MEK)	All Maintenance Shops and Areas	3
Paint Related Materials	Ignitable/flammable (D001 various paints and solvents)	Ubiquitous	0.3
Roll Shop Swarf	Toxic (D007 chromium)	Roll Shop	11
Toxic Liquids (Other)	Toxic (D007 chromium)	Ubiquitous	3

### 3.0 PLAN ADMINISTRATION AND REVISIONS [262.262(a) & 262.263]

Plan administration duties include the following:

- Review and update the Plan as soon as practical to accommodate revisions to applicable regulations and/or changes in plant equipment, emergency equipment, processes and personnel in order to ensure compliance with current applicable regulations.

- Distribute and submit updates/revision of the Plan to required entities and personnel.
- Amend the plan in the event the plan fails in an emergency.
- In conjunction with plant engineering and plant management personnel, review plans and specifications for proposed new or modified facilities to ensure compliance with this Plan.

Whenever the contingency plan is amended or revised, the quick reference guide in the front of this binder must also be updated. The revised quick reference guide and contingency plan must be submitted with each update.

#### **4.0 EMERGENCY PERSONNEL [262.264]**

The plant personnel identified in this section have been charged with the responsibilities of responding to fires, explosions or any unplanned sudden or non-sudden release of hazardous waste or hazardous constituents within the plant and managing the response activities associated with the above emergencies. The table below provides a list of emergency coordinators, including alternates, qualified to act in each capacity described below.

<b>Qualified Emergency Coordinators (40 CFR 262.262(b)(8))</b>	
<b>Role</b>	<b>24-hr Emergency Number(s)</b>
USS Security & Fire Services	(219) 763-5911 (219) 763-5650 (219) 888-4511
Environmental Coordinator	(219) 763-5151

#### **4.1 Incident Commander [Qualified Emergency Coordinator(s)]**

Incident commanders act as qualified emergency coordinators and responsibility for coordinating all emergency response measures and implementing necessary emergency procedures. Incident commanders are familiar with all aspects of the contingency plan, plant operations and activities, the location and characteristics of hazardous waste generated, the location of records, and familiar with the facility's layout. They also have the authority to commit the resources needed to carry out the contingency plan. Qualified

---

emergency coordinators are accessible for emergencies 7 days per week, 24 hours per day.

#### **4.2 Environmental Coordinator [Environmental Control Representative]**

The Environmental Coordinator can also act as a qualified emergency coordinator and also has the responsibility of providing accurate and timely communications to all outside environmental agencies where applicable.

### **5.0 EMERGENCY PROCEDURES [262.265]**

Emergency procedures are division specific and are strictly followed by each division and their designated emergency personnel. Responsibilities of various emergency personnel positions are listed herein and are designed to provide a rapid and effective response to prevent adverse impacts to air, soil, or surface water from fires, explosions, or any unplanned sudden or non-sudden release of hazardous waste or hazardous waste constituents that may occur at the Midwest Plant.

Explosive emergencies are not reasonably foreseeable occurrences because the hazardous materials stored and in use at the plant are not explosive and would not be the contributing cause of an explosion. For this reason, emergency procedures for explosions are not further considered in this Plan.

#### **5.1 Definition of Spill**

The Emergency Procedures are to be implemented if a spill occurs at the Midwest Plant. A spill will be either a non-emergency spill or an environmental emergency spill, as defined in this section.

##### **5.1.1 Non-Emergency Spill**

A non-emergency spill is defined as a release of an incidental amount of a hazardous substance(s) where the substance(s) can be absorbed, neutralized, or otherwise controlled and cleaned up at the time of or immediately after release by personnel in the immediate release area or by contracted services as needed. Area personnel must control and respond to spills and releases immediately to prevent any potential impact to

---

---

the soil or water in accordance with area specific procedures and consult with Environmental Control for guidance.

### **5.1.2 Environmental Emergency Spill**

Factors to be considered in determining if the spill is an environmental emergency include: (1) the spill creates an environment that is life or injury threatening; (2) immediate attention is required because of danger; (3) an oxygen-deficient condition is present; and/or (4) an immediate or extreme impact to Burns Waterway or Lake Michigan is possible.

## **5.2 First Observer**

In the event of a non-emergency spill, the person first observing the spill shall use department standard operating procedures and Safety Data Sheet (SDS) information, as needed, to address the incident. The first observer is responsible to make the appropriate notifications to Fire & Security Services or Gary Works Load Dispatcher (5151) and/or other emergency response personnel.

In the event of a potential environmental emergency spill, the person first observing the spill shall contact the Gary Works Load Dispatcher and inform them of the nature of the emergency. The Gary Works Load Dispatcher will contact qualified emergency response personnel.

## **5.3 Incident Commander**

Upon receiving notification of an imminent or actual emergency situation, the Incident Commander or their designee shall implement the incident command system (ICS). These responsibilities include, but are not limited to:

- When necessary, order the activation of internal plant alarms or communications systems, where necessary, to notify appropriate plant personnel. Determine the need for additional response assistance from outside resources, and authorize their use.
  - Contact an Environmental Control representative if not already present on scene. When appropriate, contact supervisors/designees of Fire & Security Services,
-



---

Utilities & Maintenance Departments, Manager of Safety, and any other departments involved if they are not initial incident observers.

- Inform the Environmental Coordinator of the spill and all information received from the first observer.
  - Identify the character, exact source, amount, and areal extent of any released materials by observation, review of plant records or manifests and, if necessary, by chemical analysis or generator knowledge.
  - Assess possible hazards to human health or the environment that may result from the release or fire (e.g., the effects of any hazardous surface water runoff from water or chemical agents used to control fire). This assessment must consider both direct and indirect effects of the release or fire.
  - Midwest does not have materials that, upon catastrophic release, would cause an immediate endangerment to the local community, such as with a toxic gas release. However, Midwest emergency and environmental personnel will extend all cooperation to implement and assist local authorities in their evacuation activities.
  - Obtain and direct personnel and equipment as necessary to contain and clean up the spill; and maintain a record of the personnel participating in the spill response and any spill response injuries and details related to the injuries or injured parties.
  - If safe, possible and necessary, request modifications or temporary curtailment of operations, as required, consistent with plant personnel and equipment safety.
  - Ensure that fires and releases do not occur, recur or spread to other materials, including hazardous wastes, at the plant. These measures must include, where applicable, stopping processes and operations, collecting and containing released wastes or other materials and removing or isolating containers.
  - Monitor for leaks, pressure buildup, or ruptures in valves, pipes, tanks, or other equipment if plant operations cease in response to an emergency situation.
  - In coordination with the Environmental Coordinator, arrange for the treatment, storage and disposal of any material that results from a release or fire immediately after an emergency.
-

- 
- As soon as incident is contained, stabilized and secured (i.e., there is no further threat to environment, life and equipment), cleanup operations, remediation and disposal oversight may be turned over to Environmental Control personnel.
  - Document, report and record any necessary information.

Before operations are resumed in the affected area(s) of the plant, the Incident Commander must first: (1) ensure that waste materials are properly managed until cleanup procedures are completed; and (2) ensure that all impacted operational equipment is cleaned and fit for its intended use.

#### **5.4 Environmental Coordinator [Environmental Control Representative]**

The Environmental Coordinator may be any person who works in the Environmental Control Department who is able and available to respond to any environmental emergency. This person may be designated as the Midwest Environmental Compliance Manager or his/her designee. Upon receiving notification of an imminent or actual environmental emergency situation, the Environmental Coordinator shall:

- Obtain the status of the response activities from the Incident Commander.
  - Provide notification to the National Response Center and other agencies (IDEM, LEPC, etc.) as required, if there has been a threat to the environment or human health outside of the facility or if releases to the environment exceed reportable quantity (RQ) thresholds.
  - Provide assistance to the Incident Commander, as requested.
  - Recommend additional corrective measures to the Incident Commander, if appropriate.
  - Conduct an incident investigation and complete all reports requested by regulatory agencies in response to initial oral notifications.
  - For non-NPDES exceedance related incidents, prepare a written report for submittal to IDEM within 15 days after the incident. The report must include:
    - Name, address, and telephone number of the owner or operator;
    - Name, address, and telephone number of the facility;
    - Date, and time of the incident, and type of incident (e.g., fire, explosion);
-

- 
- Name and quantity of material(s) involved;
  - Extent of injuries, if any;
  - Assessment of actual or potential hazards to human health or the environment, where this is applicable; and
  - Estimated quantity and disposition of recovered material that resulted from the incident.

It is not the responsibility of the Environmental Coordinator to communicate with the media. Media communications is deferred to US Steel Corporate Public Affairs.

- For incidents causing a NPDES exceedance, prepare a report for submittal to IDEM within 5 days of the incident in accordance with NPDES permit requirements.

#### **5.5 Evacuation Plan [242.261(f)]**

Based on the types of materials at the Midwest plant and the locations in which they are stored, there is no foreseeable need for the evacuation of the plant or community. For this reason, an evacuation plan is not included in this Plan. The figures provided in Appendix 2 show the primary and alternate exit locations for evacuation of the affected areas. The designation of “IN” refers to the evacuation route from the tank room to the adjacent building. The designation of “OUT” refers to the evacuation route from the tank room to the outdoors. In the event that the primary exit locations are blocked, plant personnel will use the alternate exit locations. The congregation areas for plant section evacuations will be in the area immediately adjacent to the primary or alternate exit locations.

#### **6.0 EMERGENCY SERVICES AND EQUIPMENT [262.261 (c)&(e)]**

Midwest has support for emergency services with the local police departments, fire department, hospital, contractors and State and local emergency response teams. Copies of this plan and all revisions to the plan are submitted to those emergency service providers who respond to onsite emergencies. Section 6.8 provides a list of emergency service organizations and their respective arrangement descriptions with the Midwest Plant. A list of the current emergency equipment stored at Midwest Plant is provided in Appendix 3. Emergency equipment is maintained by Security and Fire Services and the capabilities of the equipment are inherent to the descriptions given. A complete list of all

---

---

fire extinguishers at Midwest is provided in Appendix 4. Fire hydrant locations are provided on the site maps in Appendix 1.

### **6.1 Plant Security**

Plant security is provided by fencing; guard checkpoints, which are manned by plant security personnel at each entrance, and security patrols. 24-hour security is provided by plant personnel.

### **6.2 Fire Fighting Personnel and Equipment [262.252(c)&(d)]**

Fire hydrants are located throughout the plant. All fire hydrants are flushed and inspected regularly. Should the water supply to Midwest be interrupted, Lake Michigan provides an unlimited secondary water supply. In the event of fire, the Portage Fire Department and the Gary Works emergency services personnel and vehicles will be dispatched to respond per protocol. Portable fire extinguishers, which are inspected regularly, are located throughout the plant. Fire hydrant locations are provided on the site maps in Appendix 1. Various safety islands may be supplied with fire extinguishers, fire blanket, sledgehammer, and pick ax. Pressurized sprinklers are located in many areas throughout the plant.

The Midwest Plant has an emergency response vehicle available twenty-four hours per day that is fully equipped to contain environmental emergencies. The associated equipment is inspected on a regular basis.

### **6.3 Medical and Ambulance Services**

Midwest provides medical and ambulance services for injuries incurred at the plant. Security & Fire Services personnel provide basic life support (BLS) functions and have necessary equipment for BLS services in each patrol vehicle. Serious injuries are treated off-site at the appropriate hospital facility. The Portage Fire Department provides advanced life support (ALS) services and transports to the appropriate facility including Portage Hospital in Portage, Indiana and Porter Regional Hospital in Valparaiso, Indiana. Gary Works Emergency Services may also provide ambulance services to respond to emergencies.

---

---

#### **6.4 Outside Spill Response Contractor and Equipment**

Plant forces can be augmented by qualified outside contractor personnel equipped with supplies and equipment for spill containment and cleanup. The contractor will maintain spill containment equipment at their facility for rapid response in the event of a spill emergency. Equipment will be stored at the contractor's off-site staging areas. Midwest has purchase agreements with outside contractors to provide emergency response services as needed.

#### **6.5 Plant Spill Response Equipment**

A front-end loader is available at the Transportation Garage and is located on-site at all times. Various absorbents and neutralizing agents are available from the Utilities Department. The Midwest Plant response truck will be the first responders to any incident. Additionally, Gary Works Emergency Services' response vehicles can also be dispatched to Midwest for environmental emergencies as necessary. Lists of emergency equipment are provided in Appendix 3.

#### **6.6 Personal Protective Equipment**

Sufficient quantities of self-contained breathing apparatus units (SCBA's) are available for emergency service responders. Safety shower and eyewash stations are also located throughout the plant. Lists of emergency equipment are provided in Appendix 3 and includes personal protective equipment.

#### **6.7 Communications Equipment [262.252(a)&(b)]**

##### **6.7.1 Internal Communications**

Telephones are available to provide voice contact with all other telephones on the Steelcom telephone network. The phone system is used daily and any mechanical difficulties are promptly repaired. Plant telephones, located throughout the plant, are capable of providing voice contact to any outside party, including emergency response and regulatory agencies, plant emergency response personnel, and other off-site personnel that may require notification in the event of an emergency.

---



---

Portage Fire Department: Emergency 911 or Business (219) 764-5770  
6070 Central Avenue, Portage, Indiana 46368

No formal arrangement with the Portage Fire Department is necessary. The Portage Fire Department personnel are obligated to respond within their jurisdiction. The Portage Fire Department's role is to provide additional fire and emergency equipment, as necessary. They have been sent of copy of this plan.

Porter County Sheriff Department: (219) 477-3170 (24-hours)  
2755 South State Road 49, Valparaiso, Indiana 46383

No formal arrangement with the Porter County Sheriff's Department is necessary. The Porter County Sheriff's Department personnel are obligated to respond within their jurisdiction. The Porter County Sheriff's Department role is to provide additional emergency response when necessary.

US Coast Guard: (219) 879-8371 (business hours)  
No formal arrangement with the US Coast Guard is necessary. They are notified when any emergency impacts Lake Michigan and its tributaries.

Porter County LEPC: (219) 477-3170 (24-hours)  
1995 State Road 2, Valparaiso, IN 46384

No formal arrangement with the LEPC and HazMat Team is necessary. The LEPC and HazMat Team are available to all areas of Porter County. Their role is to supply specialized hazardous materials management equipment and personnel on an as needed basis. They have been sent a copy of this plan.

Porter Memorial Regional Hospital: (219) 983-8300  
85 East US Highway 6, Valparaiso, Indiana 46383

No formal arrangement with Porter Regional Hospital is necessary. Porter Regional Hospital personnel are available to provide medical services and ambulance transportation on an as needed basis.

---

---

Porter Community Hospital: (219) 364-3000

3630 Willowcreek Road, Portage, Indiana 46368

No formal arrangement with Porter Community Hospital is necessary. Hospital personnel are available to provide medical services and ambulance transportation on an as needed basis.

Indiana Dept of Environmental Management (IDEM): (888) 233-7745 (24-hr Spill Line)

100 North Senate Avenue, Indianapolis, Indiana 46204

No formal arrangement is necessary. IDEM acts as the regulatory agency for hazardous waste incidents. They have been sent a copy of this plan as part of a Class I RCRA Permit Modification.

Heritage Environmental Services, Inc: (800) 48-SPILL (487-7455)

15330 Canal Bank Road, Lemont, IL 60439

A formal arrangement has been made with heritage Environmental Services, Inc. to provide emergency cleanup response equipment, services, and personnel on an as needed basis. A copy of this agreement is included as Appendix 5.

### **Porter County Mutual Aid Agreement**

A formal agreement has been made with all Fire Departments throughout Porter County for equipment and service support to all participants. These Fire Departments could be called upon to provide additional fire-fighting equipment and personnel, as needed. A copy of this agreement is included as Appendix 6.

---



---

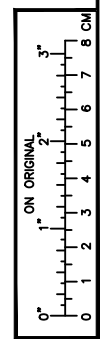
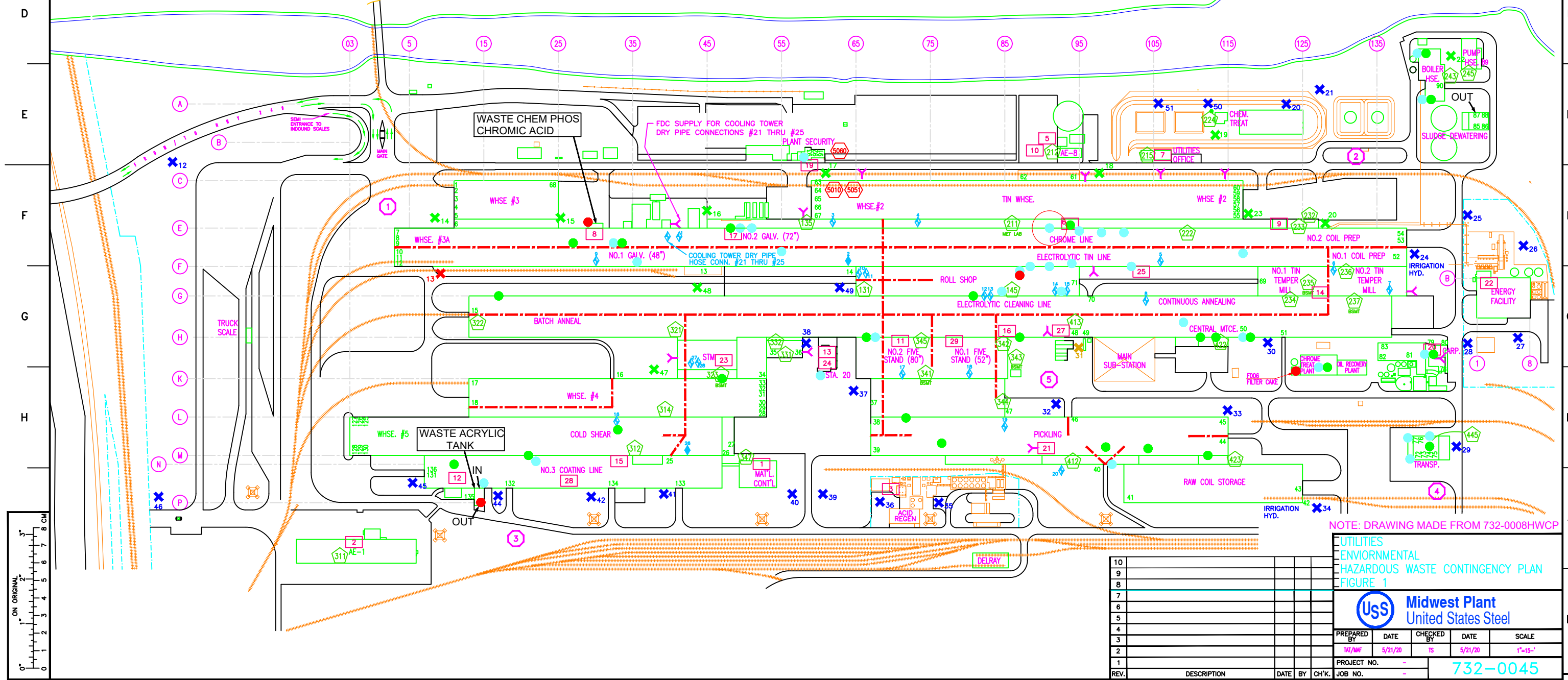
## **APPENDIX 1**

### **SITE MAPS & DIAGRAMS**

732-0045

HOOK-UPS				HYDRANT LOCATION INDEX					
NO.	DEPARTMENT	COL.NO.	AREA						
1	NO. 2 GALV. LINE (72")	41E	MIDDLE OF LINE ON WEST WALL	1	C-13	18	F-11	35	J-9
2	NO. 1 GALV. LINE (48")	63F	ENTRY END EAST WALL	2	C-13	19	E-12	36	J-19
3	TIN WAREHOUSE	63D	LOADERS DESK DOCK NO. 1	3	B-5	20	E-13	37	H-8
4	NO. 2 TIN SHEAR	77E	ENTRY END	4	A-3	21	E-13	38	G-8
5	TIN LINE	102F	FUME EXHAUST STACK	5	A-4	22	D-14	39	J-8
6	No. 1 TIN TEMPER MILL	127F	EXIT END BEHIND RECORDERS DESK	6	B-3	23	F-12	40	J-8
7	No. 2 TIN TEMPER MILL	135G	ENTRY END, UNDER 1" HOSE REEL	7	C-4	24	F-14	41	J-7
8	C.A. LINE	101G	BEHIND ENTRY END	8	C-4	25	F-14	42	J-6
9	NO. 1 GALV. LINE (48")	31F	EXIT END EAST WALL	9	C-2	26	F-15	43	-
10-11	ROLL SHOP	65FG	SOUTH END OF ROLL SHOP	10	B-1	27	F-15	44	J-5
12-13	CLEANING LINE	83G	ENTRY END GOING INTO ROLL SHOP	11	A-2	28	G-14	45	J-4
14-15	ROLL SHOP	95G	NORTH END OF ROLL SHOP	12	E-2	29	H-14	46	J-2
16	COMBO LINE	31L	BEHIND EXIT END	13	G-4	30	G-12	47	H-7
17	80" 5 STAND	74K	ENTRY END	14	F-4	31	G-11	48	G-7
18	52" 5 STAND	83K	ENTRY END	15	F-6	32	H-10	49	G-8
19	PICKLE LINE	83L	MIDDLE OF LINE WEST WALL	16	F-7	33	H-12	50	E-12
20	PICKLE LINE	89M	FUME EXHAUST STACK	17	F-8	34	J-13	51	F-13
21-25	NO. 2 GALV. LINE	37E	COOLING TOWER	EMERGENCY VEHICLE INDEX					
26	COLD SHEAR	43M	ENTRY END WEST WALL	5911	- FIRE ENGINE				
27	SHEET TEMPER MILL	47K	EXIT END EAST SIDE	5911	- SPECIAL HAZARDS RESPONSE TRAILER				
28	SHEET TEMPER MILL	47K	EXIT END EAST SIDE	5911	- AMBULANCE				

- LEGEND**
- Y FIRE DEPARTMENT CONNECTION
  - XX INDICATES DOOR NUMBER
  - 2-1/2" HOOK UPS
  - 5" HOOK UPS
  - FIRE LANE
  - INDICATED STAGING AREAS
  - GAMEWELL BOX
  - AEROSOLS BIN
  - 90 DAY STORAGE AREA
  - HAZARDOUS WASTE
  - FIRE HYDRANT - 1500 GPM OR GREATER
  - FIRE HYDRANT - 1000 TO 1499 GPM
  - FIRE HYDRANT - 500 TO 999 GPM
  - FIRE HYDRANT - LESS THAN 500 GPM
  - FIRE HYDRANT - NO PRESSURE
  - EMERGENCY VEHICLE
  - FIRE PANEL



NOTE: DRAWING MADE FROM 732-0008HWCP  
 UTILITIES  
 ENVIRONMENTAL  
 HAZARDOUS WASTE CONTINGENCY PLAN  
 FIGURE 1



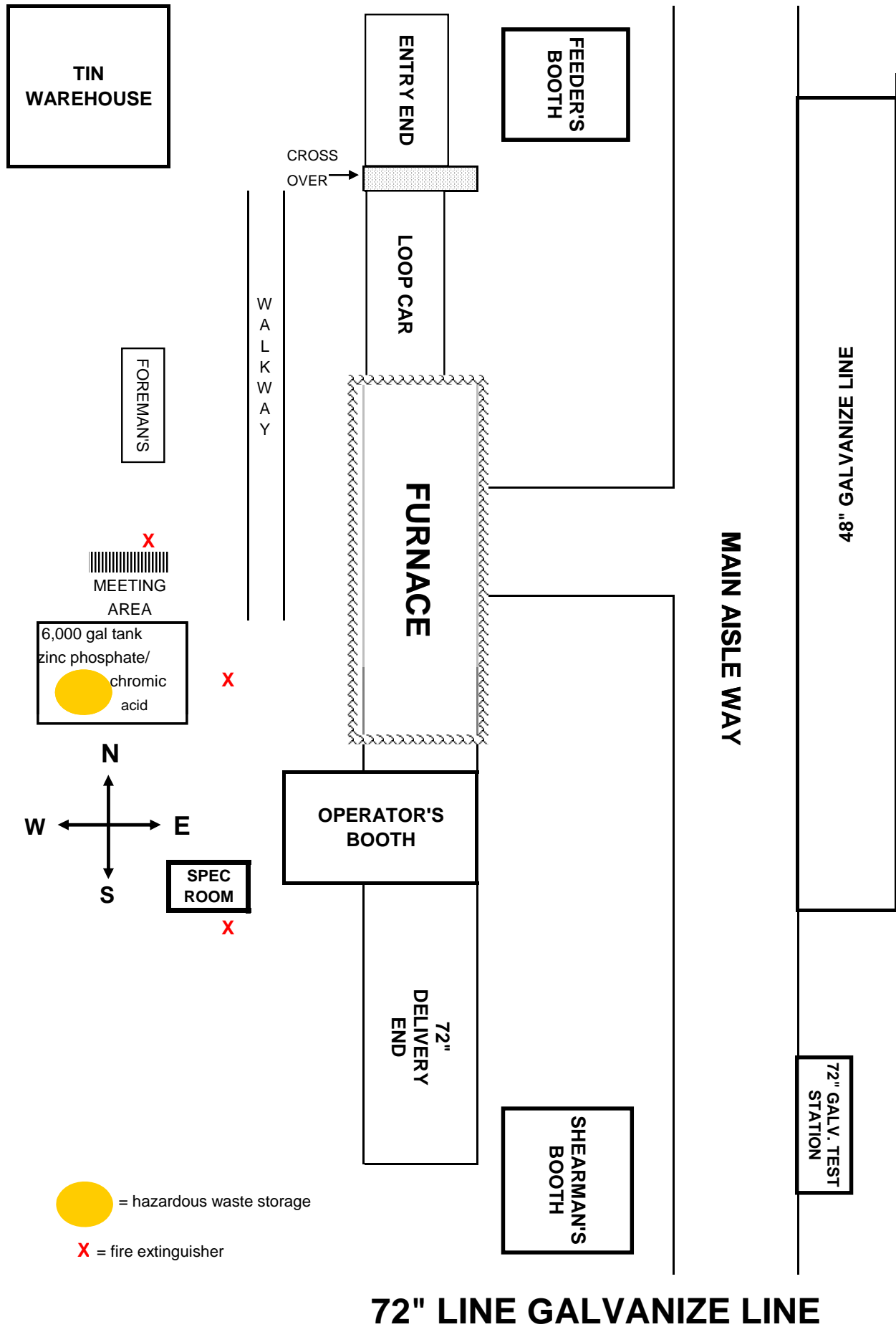
10					
9					
8					
7					
6					
5					
4					
3					
2					
1					
REV.	DESCRIPTION	DATE	BY	CHK.	JOB NO.

---

## **APPENDIX 2**

### **EVACUATION & ASSEMBLY FIGURES**

FIGURE 2



# 72" LINE GALVANIZE LINE

FIGURE 3

Title RS Emergency Evacuation Map

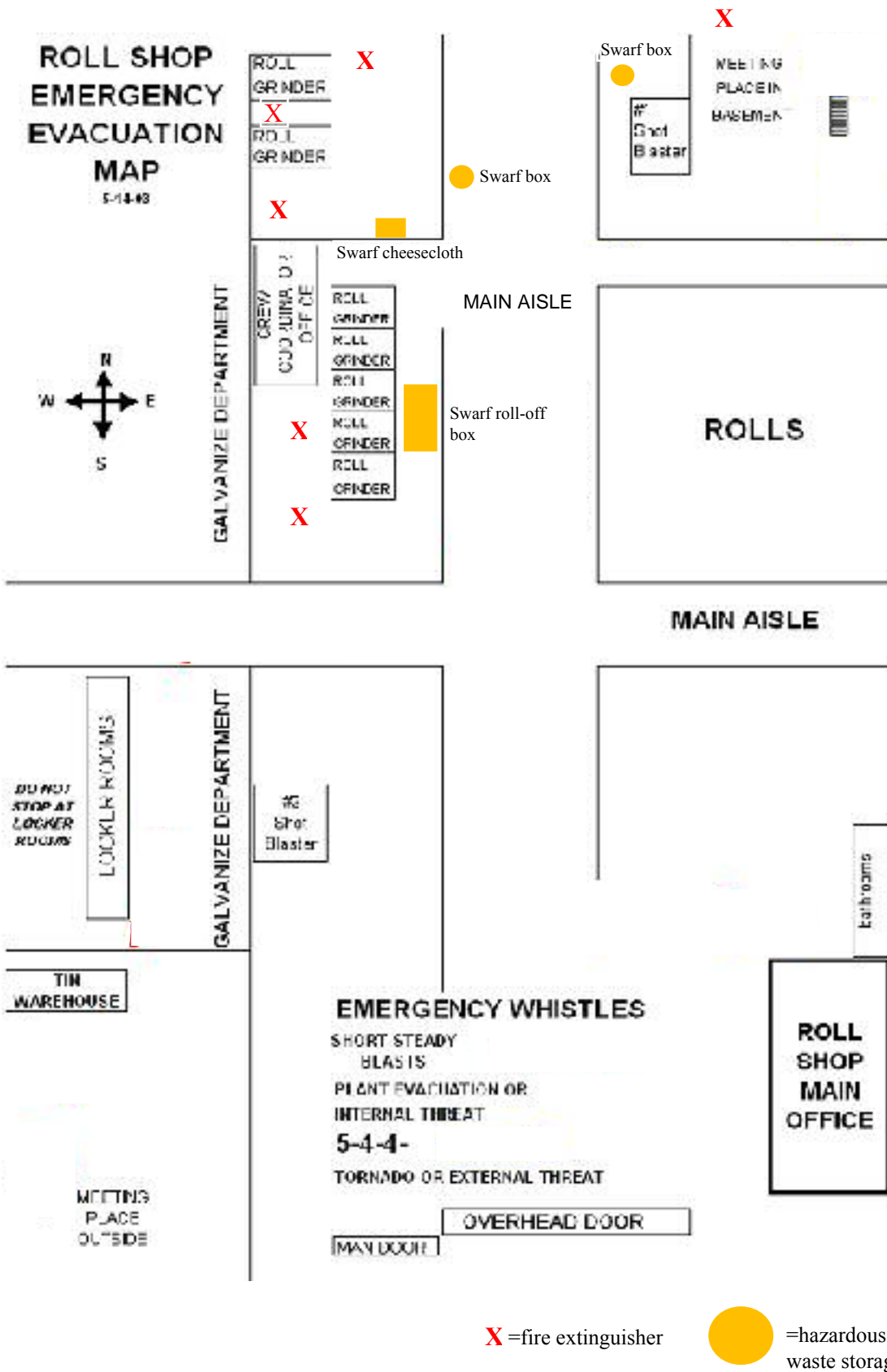
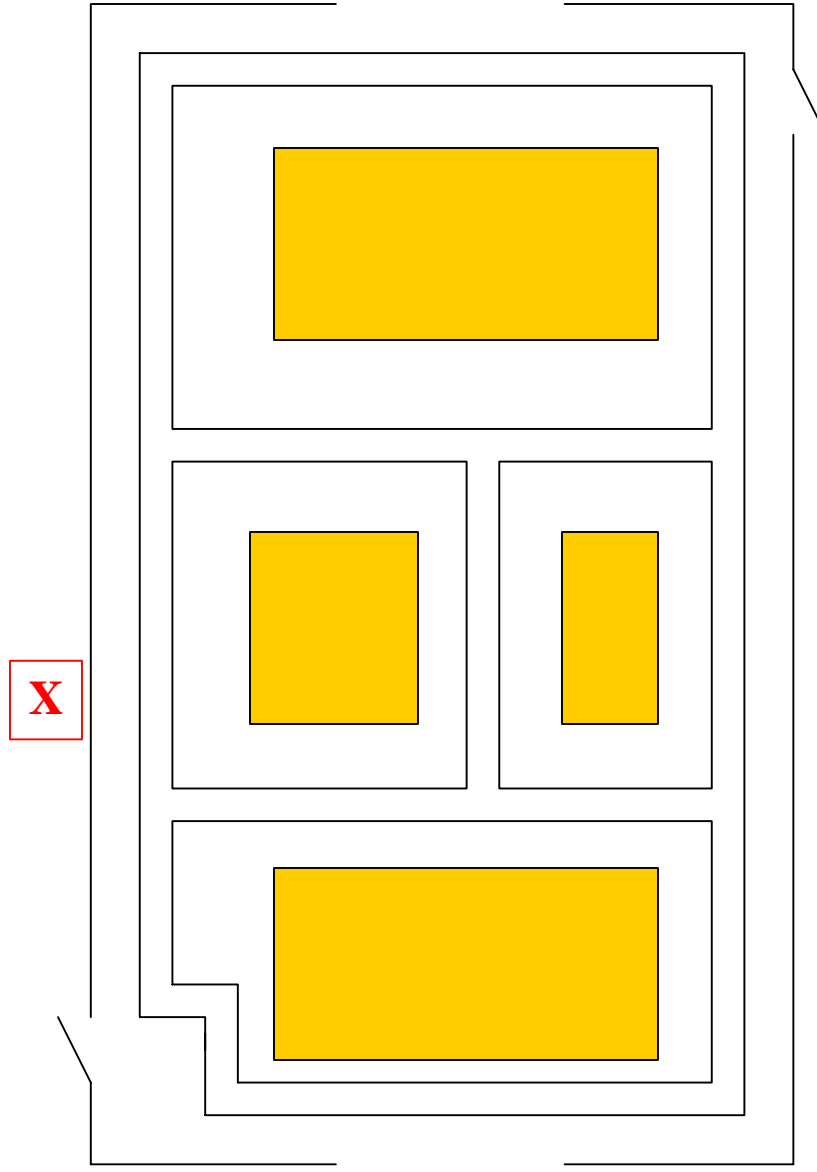
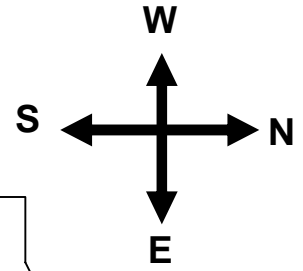


FIGURE 4

# Haz Waste Storage Shed

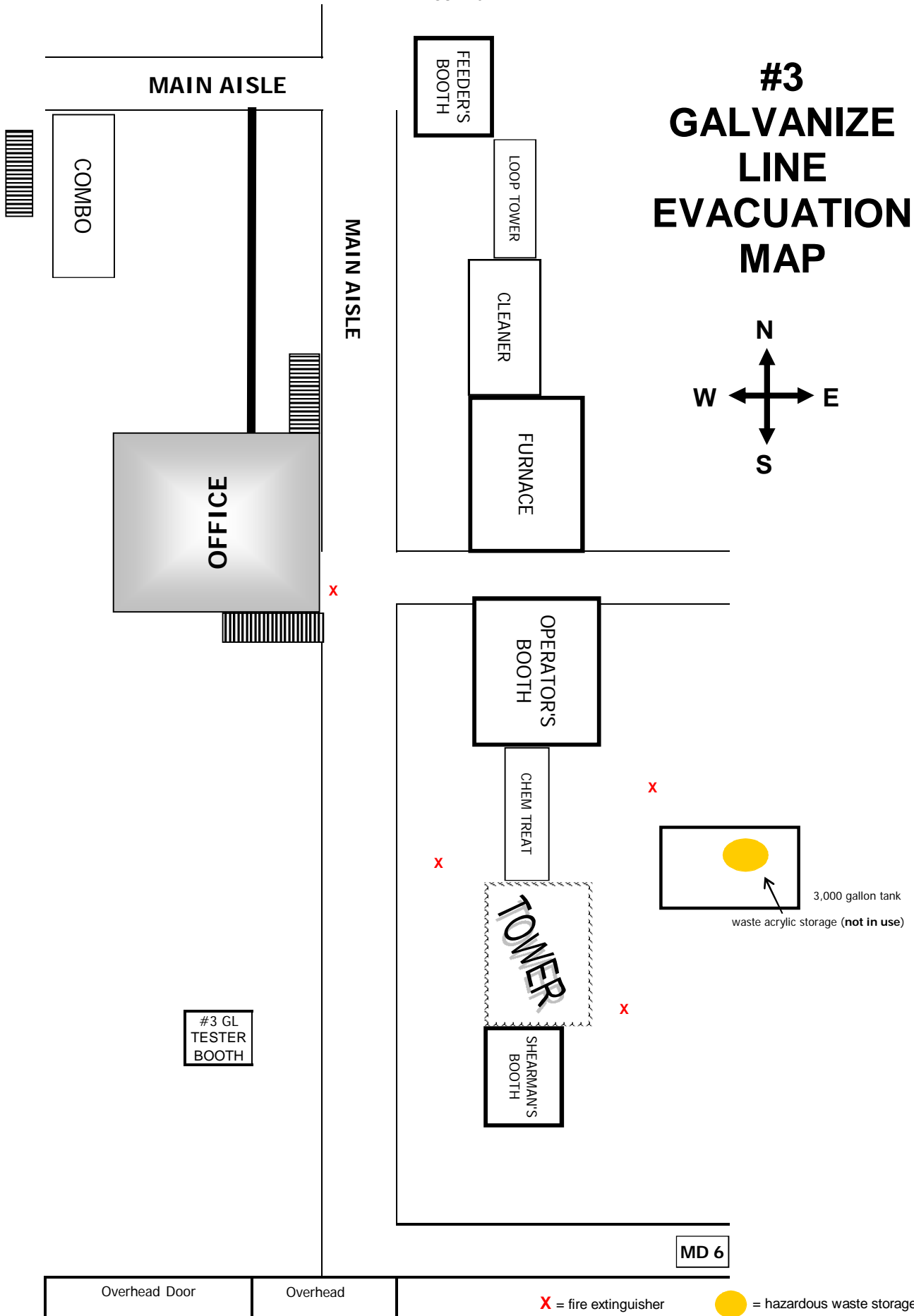
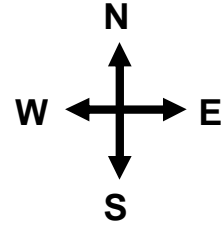


 - Fire Extinguisher

 - Hazardous Waste Storage

FIGURE 5

# #3 GALVANIZE LINE EVACUATION MAP



---

## **APPENDIX 3**

### **EMERGENCY EQUIPMENT LISTS**





<input type="checkbox"/>		1-1 1/2" to 1 1/2" Wye
<input type="checkbox"/>		1-Stortz - 2 1/2" Female Fitting
<input type="checkbox"/>		1-TFT Foam Jet Tip

**Drivers Side Outside**

<input type="checkbox"/>		1-Stokes Basket with Straps
<input type="checkbox"/>		1- Long Spine Board with Straps
<input type="checkbox"/>		1-150 lb. Purple K Fire Extinguisher
<input type="checkbox"/>		1-14' Extension Ladder

**Compartment 4 Passenger Side Upper Front**

<input type="checkbox"/>		1-8 lb. Sledge Hammer
<input type="checkbox"/>		1-6' Pike Pole
<input type="checkbox"/>		1-4' Pike Pole
<input type="checkbox"/>		1-Pick Headed Axe
<input type="checkbox"/>		1-Flat Headed Axe
<input type="checkbox"/>		1- Pair of Bolt Cutters
<input type="checkbox"/>		1-Halligan Bar
<input type="checkbox"/>		1-Hurst Power Unit
<input type="checkbox"/>		1-Combination Hurst Tool with Hose

**Compartment 5 Passenger Side Upper Rear**

<input type="checkbox"/>		1-Automatic Foam Inductor Pump
<input type="checkbox"/>		1-Quart of Copper Anti-Seize
<input type="checkbox"/>		1-Can of Copper Anti-Seize
<input type="checkbox"/>		1-Can Aero Kroil
<input type="checkbox"/>		2-Pipes
<input type="checkbox"/>		1-PIV Wrench
<input type="checkbox"/>		1-Bucket Waterless Wipes
<input type="checkbox"/>		1-Tool Box Containing Misc. Tools
<input type="checkbox"/>		1-2 lb. Sledge Hammer
<input type="checkbox"/>		1-Wire Brush (In Tool Box)
<input type="checkbox"/>		1-18" Pipe Wrench
<input type="checkbox"/>		1-24" Pipe Wrench
<input type="checkbox"/>		1- 1/2" Socket Set

**Compartment 6 Passenger Lower Front**

<input type="checkbox"/>		1-Lock-Out Kit
<input type="checkbox"/>		2-Rolls Scene Tape
<input type="checkbox"/>		3-Rolls Duct Tape
<input type="checkbox"/>		2-Power Flares
<input type="checkbox"/>		3-Tarps
<input type="checkbox"/>		1-Haz-Mat Spill Kit
<input type="checkbox"/>		1-Dräger Kit
<input type="checkbox"/>		Ammonia Tubes Exp.
<input type="checkbox"/>		Carbon Monoxide Tubes Exp.
<input type="checkbox"/>		Chlorine Tubes Exp.
<input type="checkbox"/>		Hydrochloric Acid Tubes Exp.
<input type="checkbox"/>		Natural Gas Tubes Exp.
<input type="checkbox"/>		Nitrogen Tubes Exp.
<input type="checkbox"/>		Sulfuric Acid Exp.
<input type="checkbox"/>		Sulphur Dioxide Tubes Exp.

<b>Hose Bed</b>		
<input type="checkbox"/>		300' of 3" Hose
<input type="checkbox"/>		300' of 1 3/4" Hose with TFT Fog Nozzle

Midwest Attack Truck  
 Monthly Inventory Form  
 Revised:09-01-2016

---

## **APPENDIX 4**

# **FIRE EXTINGUISHERS**

### USS Midwest Plant Fire Extinguishers

Plant	District	Location Code	Location Description	Department	Floor Reference	Target	Zone
Gary Complex	MW01	L2003797	Southwest Door	Material C	Main	MW01-052	Material C
Gary Complex	MW01	L2003798	South Wall	Material C	Main	MW01-048	Material C
Gary Complex	MW01	L2003799	Northwest Wall	Material C	Main	MW01-047	Material C
Gary Complex	MW01	L2003800	Northeast Wall	Material C	Main	MW01-050	Material C
Gary Complex	MW01	L2003801	Vending Area	Material C	Main	MW01-051	Material C
Gary Complex	MW01	L2003802	Southeast Wall	Material C	Main	MW01-049	Material C
Gary Complex	MW01	L2003879	Safety Island 10	Sheet Temper	Ground	MW01-044	Sheet Temper
Gary Complex	MW01	L2003880	Safety Island #10	Sheet Temper	Ground	MW01-045	Sheet Temper
Gary Complex	MW01	L2003881	B- Column JH45B	Sheet Temper	Basement	MW01-031	Sheet Temper
Gary Complex	MW01	L2003882	Column JH46B	STM	Bsmnt	MW01-032	STM
Gary Complex	MW01	L2003883	Column JH48B	STM	Bsmnt	MW01-033	STM
Gary Complex	MW01	L2003884	B- Electrical Basement	Sheet Temper	Basement	MW01-035	Sheet Temper
Gary Complex	MW01	L2003885	B- Electrical Basement	Sheet Temper	Basement	MW01-034	Sheet Temper
Gary Complex	MW01	L2003886	B- Electrical Basement	Sheet Temper	Basement	MW01-036	Sheet Temper
Gary Complex	MW01	L2003887	Column JK47	Sheet Temper	Ground	MW01-040	Sheet Temper
Gary Complex	MW01	L2003888	Mill Top	Sheet Temper	1	MW01-043	Sheet Temper
Gary Complex	MW01	L2003889	Column J49	Sheet Temper	Ground	MW01-038	Sheet Temper
Gary Complex	MW01	L2003890	Column K45	STM	Main	MW01-042	STM
Gary Complex	MW01	L2003895	Safety Island # 22	Batch Anne	Ground	MW01-027	Batch Anne
Gary Complex	MW01	L2003896	Safety Island # 22	Batch Anne	Ground	MW01-028	Batch Anne
Gary Complex	MW01	L2003898	Column G26	Batch Anne	Ground	MW01-003	Batch Anne
Gary Complex	MW01	L2003899	Column G30	Batch Anne	Ground	MW01-004	Batch Anne
Gary Complex	MW01	L2003901	Column G47	Batch Anne	Ground	MW01-005	Batch Anne
Gary Complex	MW01	L2003902	Column G49	Batch Anne	Ground	MW01-006	Batch Anne
Gary Complex	MW01	L2003903	Column G55	Batch Anne	Ground	MW01-007	Batch Anne
Gary Complex	MW01	L2003904	Column G59	Batch Anne	Ground	MW01-008	Batch Anne
Gary Complex	MW01	L2003905	Safety Island # 7	Batch Anne	Ground	MW01-030	Batch Anne
Gary Complex	MW01	L2003906	Safety Island # 7	Batch Anne	Ground	MW01-029	Batch Anne
Gary Complex	MW01	L2003907	B- Column G53B	Batch Anne	Basement	MW01-002	Batch Anne
Gary Complex	MW01	L2003908	B- BA/STM Computer	Batch Anne	Basement	MW01-001	Batch Anne
Gary Complex	MW01	L2003909	Column H59	Batch Anne	Ground	MW01-015	Batch Anne
Gary Complex	MW01	L2003911	Electrical Room Column HJ53	Batch Anne	Ground	MW01-021	Batch Anne
Gary Complex	MW01	L2003913	Main Control Room Ext.	Batch Anne	Ground	MW01-023	Batch Anne
Gary Complex	MW01	L2003914	Main Control Room Ext.	Batch Anne	Ground	MW01-024	Batch Anne
Gary Complex	MW01	L2003916	Main Control Room Ext.	Batch Anne	Ground	MW01-025	Batch Anne
Gary Complex	MW01	L2003921	Column H41	Batch Anne	Ground	MW01-014	Batch Anne
Gary Complex	MW01	L2003922	Electrical Room Column H36	Batch Anne	Ground	MW01-018	Batch Anne
Gary Complex	MW01	L2003923	Column H32	Batch Anne	Ground	MW01-013	Batch Anne
Gary Complex	MW01	L2003924	Column H26	Batch Anne	Ground	MW01-012	Batch Anne

### USS Midwest Plant Fire Extinguishers

Plant	District	Location Code	Location Description	Department	Floor Reference	Target	Zone
Gary Complex	MW01	L2003925	Column H22	Batch Anne	Ground	MW01-011	Batch Anne
Gary Complex	MW01	L2003926	Column H18	Batch Anne	Ground	MW01-010	Batch Anne
Gary Complex	MW01	L2003927	Electrical Room Column H16	Batch Anne	Ground	MW01-016	Batch Anne
Gary Complex	MW01	L2003928	Column H14	Batch Anne	Ground	MW01-009	Batch Anne
Gary Complex	MW01	L2004697	LOTO Trailer	80 5 Stand	Ground	MW01-099	80 5 Stand
Gary Complex	MW01	L2004698	LOTO Trailer Office	80 5 Stand	Ground	MW01-098	80 5 Stand
Gary Complex	MW01	L2004707	Upstairs Office	80 5 Stand	1	MW01-111	80 5 Stand
Gary Complex	MW01	L2005178	Carpenters Shop-West Man	Cntrl Main	Main	MW01-210	Cntrl Main
Gary Complex	MW01	L2005180	Carpenters Shop-North	Cntrl Main	Main	MW01-212	Cntrl Main
Gary Complex	MW01	L2005181	Carpenters Shop-Main	Cntrl Main	Main	MW01-211	Cntrl Main
Gary Complex	MW01	L2005194	West Fuel Station	Transportation	Main	MW01-223	Transportation
Gary Complex	MW01	L2005195	Diesel Fuel Tank N.W. of	Transportation	Main	MW01-224	Transportation
Gary Complex	MW01	L2005200	Middle of Garage on the	Garage	Main	MW01-183	Garage
Gary Complex	MW01	L2005201	South Wall at Door 73	Garage	Main	MW01-182	Garage
Gary Complex	MW01	L2005203	Lower Parts Room	Garage	Main	MW01-187	Garage
Gary Complex	MW01	L2005204	Upstairs Parts Room	Garage	1	MW01-186	Garage
Gary Complex	MW01	L2005205	North Wall at Door 75	Garage	Main	MW01-184	Garage
Gary Complex	MW01	L2005223	Northeast Corner-Hallway	Process Control	Main	MW01-060	Process Co
Gary Complex	MW01	L2005224	Copier Room	Process Control	Main	MW01-062	Process Co
Gary Complex	MW01	L2005225	Southwest Corner-Hallway	Process Control	Main	MW01-059	Process Co
Gary Complex	MW01	L2005226	West Transformer	Process Control	Main	MW01-061	Process Co
Gary Complex	MW01	L2005227	Office Area West Side	Process Control	Basement	MW01-058	Process Co
Gary Complex	MW01	L2005228	Office Area West Side	Process Control	Basement	MW01-057	Process Co
Gary Complex	MW01	L2005229	CRA Comp. Room East Wall	Process Control	Basement	MW01-063	Process Co
Gary Complex	MW01	L2005230	CRA Comp. Room West	Process Control	Basement	MW01-064	Process Co
Gary Complex	MW01	L2005231	Office E. Side	Process Control	Bsmnt	MW01-055	Process Co.
Gary Complex	MW01	L2005232	Office Area East Side	Process Control	Basement	MW01-056	Process Co
Gary Complex	MW01	L2005233	Base of Stairs East Side	Process Control	Basement	MW01-065	Process Co
Gary Complex	MW01	L2005298	CR Maintenance	80 5 Stand	Ground	MW01-096	80 5 Stand
Gary Complex	MW01	L2005299	CR Maintenance	80 5 Stand	Ground	MW01-095	80 5 Stand
Gary Complex	MW01	L2005300	Column JK65	80 5 Stand	Ground	MW01-091	80 5 Stand
Gary Complex	MW01	L2005301	South PLC Room Column	80 5 Stand	Ground	MW01-110	80 5 Stand
Gary Complex	MW01	L2005302	ERT Lunchroom	80 5 Stand	Ground	MW01-101	80 5 Stand
Gary Complex	MW01	L2005304	Column J69	80 5 Stand	Ground	MW01-082	80 5 Stand
Gary Complex	MW01	L2005306	Mill Top East Side	80 5 Stand	1	MW01-105	80 5 Stand
Gary Complex	MW01	L2005307	Column K72	80 5 Stand	Ground	MW01-092	80 5 Stand
Gary Complex	MW01	L2005308	B- Column K72B	80 5 Stand	Basement	MW01-070	80 5 Stand
Gary Complex	MW01	L2005309	B- Column KL73B	80 5 Stand	Basement	MW01-074	80 5 Stand
Gary Complex	MW01	L2005310	B- Column KL74B	80 5 Stand	Basement	MW01-075	80 5 Stand

### USS Midwest Plant Fire Extinguishers

Plant	District	Location Code	Location Description	Department	Floor Reference	Target	Zone
Gary Complex	MW01	L2005311	B- Column K74B	80 5 Stand	Basement	MW01-072	80 5 Stand
Gary Complex	MW01	L2005312	B- Circulating Oil Tank	80 5 Stand	Basement	MW01-066	80 5 Stand
Gary Complex	MW01	L2005313	B- Column KL71B	80 5 Stand	Basement	MW01-073	80 5 Stand
Gary Complex	MW01	L2005314	B- Column K73B	80 5 Stand	Basement	MW01-071	80 5 Stand
Gary Complex	MW01	L2005315	B- Column JK72B	80 5 Stand	Basement	MW01-068	80 5 Stand
Gary Complex	MW01	L2005317	B- Column JK74B	80 5 Stand	Basement	MW01-069	80 5 Stand
Gary Complex	MW01	L2005318	B- Column J74B	80 5 Stand	Basement	MW01-067	80 5 Stand
Gary Complex	MW01	L2005320	Pulpit-Column J73	80 5 Stand	1	MW01-107	80 5 Stand
Gary Complex	MW01	L2005321	Mill Top West Side	80 5 Stand	1	MW01-106	80 5 Stand
Gary Complex	MW01	L2005322	Column J71	80 5 Stand	Ground	MW01-083	80 5 Stand
Gary Complex	MW01	L2005323	Column K75	80 5 Stand	Ground	MW01-094	80 5 Stand
Gary Complex	MW01	L2005324	Extinguisher Island	80 5 Stand	Ground	MW01-104	80 5 Stand
Gary Complex	MW01	L2005325	Extinguisher Island	80 5 Stand	Ground	MW01-102	80 5 Stand
Gary Complex	MW01	L2005326	Extinguisher Island	80 5 Stand	Ground	MW01-103	80 5 Stand
Gary Complex	MW01	L2005329	Safety Island # 18	80 5 Stand	Ground	MW01-108	80 5 Stand
Gary Complex	MW01	L2005330	Safety Island #18	80 5 Stand	Ground	MW01-109	80 5 Stand
Gary Complex	MW01	L2005331	Column J75	80 5 Stand	Ground	MW01-090	80 5 Stand
Gary Complex	MW01	L2005332	Column J75U1	80 5 Stand	1	MW01-085	80 5 Stand
Gary Complex	MW01	L2005333	Computer Relay Room	80 5 Stand	1	MW01-086	80 5 Stand
Gary Complex	MW01	L2005334	Column J73U1	80 5 Stand	1	MW01-084	80 5 Stand
Gary Complex	MW01	L2005335	Computer Room-Upper	80 5 Stand	1	MW01-089	80 5 Stand
Gary Complex	MW01	L2005336	Computer Relay Room-South	80 5 Stand	1	MW01-087	80 5 Stand
Gary Complex	MW01	L2005337	B- Electrical Basement	80 5 Stand	Basement	MW01-079	80 5 Stand
Gary Complex	MW01	L2005339	B- Electrical Basement	80 5 Stand	Basement	MW01-078	80 5 Stand
Gary Complex	MW01	L2005340	B- Electrical Basement	80 5 Stand	Basement	MW01-077	80 5 Stand
Gary Complex	MW01	L2005341	B- Electrical Basement	80 5 Stand	Basement	MW01-076	80 5 Stand
Gary Complex	MW01	L2005343	Column M069	Pickle Line	Ground	MW01-134	Pickle Line
Gary Complex	MW01	L2005344	South End Planners Office	Pickle Line	Ground	MW01-175	Pickle Line
Gary Complex	MW01	L2005345	Column M071	Pickle Line	Ground	MW01-135	Pickle Line
Gary Complex	MW01	L2005346	Column M073	Pickle Line	Ground	MW01-136	Pickle Line
Gary Complex	MW01	L2005356	Column M080	Pickle Line	Ground	MW01-138	Pickle Line
Gary Complex	MW01	L2005359	Column M089	Pickle Line	Ground	MW01-140	Pickle Line
Gary Complex	MW01	L2005365	Column M108U1	Pickle Line	1	MW01-147	Pickle Line
Gary Complex	MW01	L2005366	Column M108U1	Pickle Line	1	MW01-148	Pickle Line
Gary Complex	MW01	L2005367	Column M109	Pickle Line	Ground	MW01-149	Pickle Line
Gary Complex	MW01	L2005368	Column N107	Pickle Line	Ground	MW01-151	Pickle Line
Gary Complex	MW01	L2005369	Column M104	Pickle Line	Ground	MW01-144	Pickle Line
Gary Complex	MW01	L2005371	Basement Column M101B	Pickle Line	Basement	MW01-122	Pickle Line
Gary Complex	MW01	L2005372	Basement Column M102B	Pickle Line	Basement	MW01-123	Pickle Line

### USS Midwest Plant Fire Extinguishers

Plant	District	Location Code	Location Description	Department	Floor Reference	Target	Zone
Gary Complex	MW01	L2005373	Basement Column M103B	Pickle Line	Basement	MW01-124	Pickle Line
Gary Complex	MW01	L2005374	Basement Column M105B	Pickle Line	Basement	MW01-125	Pickle Line
Gary Complex	MW01	L2005375	Column M106B	Pickle Line	Bsmnt	MW01-126	Pickle Line
Gary Complex	MW01	L2005376	Basement Column M107B	Pickle Line	Basement	MW01-127	Pickle Line
Gary Complex	MW01	L2005377	Basement Column	Pickle Line	Basement	MW01-115	Pickle Line
Gary Complex	MW01	L2005380	Column O111U1	Pickle Line	1	MW01-155	Pickle Line
Gary Complex	MW01	L2005384	Safety Island #17	Pickle Line	Ground	MW01-170	Pickle Line
Gary Complex	MW01	L2005393	Safety Island #14	Pickle Line	Ground	MW01-168	Pickle Line
Gary Complex	MW01	L2005409	North Fuel Station	Transportation	Main	MW01-222	Transportation
Gary Complex	MW01	L2005410	E.W. Hallway	Transportation	Main	MW01-191	Transportation
Gary Complex	MW01	L2005411	North-South Hallway	Transportation	Main	MW01-190	Transportation
Gary Complex	MW01	L2005412	Lunch Room	Transportation	Main	MW01-188	Transportation
Gary Complex	MW01	L2005413	Lunch Room	Transportation	Main	MW01-189	Transportation
Gary Complex	MW01	L2005501	East Wall	Utilities	Main	MW01-214B	Waste Pump
Gary Complex	MW01	L2005508	Pretreat-D.M. Plant	Utilities	Main	MW01-216	Utilities
Gary Complex	MW01	L2005509	Pretreat Filter Building	Utilities	Main	MW01-215	Utilities
Gary Complex	MW01	L2005522	Column M087U1	Pickle Line	1	MW01-139	Pickle Line
Gary Complex	MW01	L2005523	Column M079U1	Pickle Line	1	MW01-137	Pickle Line
Gary Complex	MW01	L2005524	Column M095U1	Pickle Line	1	MW01-141	Pickle Line
Gary Complex	MW01	L2005525	Column LM097	Pickle Line	Ground	MW01-131	Pickle Line
Gary Complex	MW01	L2005526	Column LM085	Pickle Line	Ground	MW01-130	Pickle Line
Gary Complex	MW01	L2005527	Column L085	Pickle Line	Ground	MW01-128	Pickle Line
Gary Complex	MW01	L2005528	Computer Room- West	Pickle Line	Ground	MW01-156	Pickle Line
Gary Complex	MW01	L2005530	Safety Island #13	Pickle Line	Ground	MW01-166	Pickle Line
Gary Complex	MW01	L2005531	Safety Island #13	Pickle Line	Ground	MW01-165	Pickle Line
Gary Complex	MW01	L2005703	Portside-Warehouse-West	Utilities	Main	MW01-205	Utilities
Gary Complex	MW01	L2005704	Portside-Warehouse-East Door	Utilities	Main	MW01-206	Utilities
Gary Complex	MW01	L2005706	Portside-Fuel Storage-Shed	Utilities	Main	MW01-209	Utilities
Gary Complex	MW01	L2005707	Portside Chem Storage East	Utilities	Main	MW01-208	Utilities
Gary Complex	MW01	L2005708	Portside-Chem Storage-North	Utilities	Main	MW01-207	Utilities
Gary Complex	MW01	L2005709	Portside-North Door	Utilities	Main	MW01-193	Utilities
Gary Complex	MW01	L2005710	Portside-Safety Island # 21	Utilities	Main	MW01-195	Utilities
Gary Complex	MW01	L2005711	Portside-Safety Island # 21	Utilities	Main	MW01-194	Utilities
Gary Complex	MW01	L2005712	Portside-Maintenance Area	Utilities	Main	MW01-199	Utilities
Gary Complex	MW01	L2005713	Portside-Maintenance Area	Utilities	Main	MW01-200	Utilities
Gary Complex	MW01	L2005716	Portside-East Door	Utilities	Main	MW01-192	Utilities
Gary Complex	MW01	L2005717	Portside-South Door	Utilities	Main	MW01-202	Utilities
Gary Complex	MW01	L2005718	Portside-Northwest Door	Utilities	Main	MW01-204	Utilities
Gary Complex	MW01	L2005719	Portside-Southwest Door	Utilities	Main	MW01-201	Utilities

### USS Midwest Plant Fire Extinguishers

Plant	District	Location Code	Location Description	Department	Floor Reference	Target	Zone
Gary Complex	MW01	L2005720	Portside-Substation	Utilities	Main	MW01-197	Utilities
Gary Complex	MW01	L2005721	Portside-Substation	Utilities	Main	MW01-196	Utilities
Gary Complex	MW01	L2005722	Portside-Control Room	Utilities	2	MW01-203	Utilities
Gary Complex	MW01	L2005723	Portside Office Area	Utilities	2	MW01-198	Utilities
Gary Complex	MW01	L2005738	Barrel Pad - North Side	Utilities	Main	MW01-220	Utilities
Gary Complex	MW01	L2005739	Barrel Pad South Side	Utilities	Main	MW01-221	Utilities
Gary Complex	MW01	L2005740	Barrel Pad Office	Utilities	Main	MW01-219	Utilities
Gary Complex	MW01	L2005741	Barrel Pad Office	Utilities	Main	MW01-218	Utilities
Gary Complex	MW01	L2005750	#5 and #6 Compressor	Utilities	Main	MW01-180	Utilities
Gary Complex	MW01	L2005751	#5 and #6 Compressor	Utilities	Main	MW01-179	Utilities
Gary Complex	MW01	L2005752	#5 and #6 Compressor	Utilities	Main	MW01-178	Utilities
Gary Complex	MW01	L2005799	TMH Fuel Station	Transportation	Main	MW01-225	Transportation
Gary Complex	MW01	L2005806	Column J43	STM	Main	MW01-037	STM
Gary Complex	MW01	L2005807	Elect. Planner Trailer Office	80 5 Stand	Ground	MW01-097	80 5 Stand
Gary Complex	MW01	L2005825	Upstairs-Utility Room	Material C	1	MW01-053	Material C
Gary Complex	MW01	L2005826	Northeast Wall	Material C	Main	MW01-054	Material C
Gary Complex	MW01	L2005827	Northwest Wall	Material C	Main	MW01-046	Material C
Gary Complex	MW01	L2005846	Die Build-up Area	Pickle Line	Ground	MW01-157	Pickle Line
Gary Complex	MW01	L2005848	Maintenance Area	Pickle Line	Ground	MW01-160	Pickle Line
Gary Complex	MW01	L2005850	Electrical Office	Pickle Line	Ground	MW01-158	Pickle Line
Gary Complex	MW01	L2005851	Lock Out-Tag Out Office	Pickle Line	Ground	MW01-159	Pickle Line
Gary Complex	MW01	L2005853	North End Extinguisher	Pickle Line	Ground	MW01-161	Pickle Line
Gary Complex	MW01	L2005854	North End Extinguisher	Pickle Line	Ground	MW01-162	Pickle Line
Gary Complex	MW01	L2005855	North End Extinguisher	Pickle Line	Ground	MW01-163	Pickle Line
Gary Complex	MW01	L2005856	North End Extinguisher	Pickle Line	Ground	MW01-164	Pickle Line
Gary Complex	MW01	L2005859	Column LM110	Pickle Line	Ground	MW01-133	Pickle Line
Gary Complex	MW01	L2005861	Column N115	Pickle Line	Ground	MW01-153	Pickle Line
Gary Complex	MW01	L2005862	Column N113	Pickle Line	Ground	MW01-152	Pickle Line
Gary Complex	MW01	L2005863	Column O110U1	Pickle Line	1	MW01-154	Pickle Line
Gary Complex	MW01	L2005864	Column M107	Pickle Line	Ground	MW01-146	Pickle Line
Gary Complex	MW01	L2005865	Column N103	Pickle Line	Ground	MW01-150	Pickle Line
Gary Complex	MW01	L2005866	Column M105	Pickle Line	Ground	MW01-145	Pickle Line
Gary Complex	MW01	L2005867	Column M101	Pickle Line	Ground	MW01-143	Pickle Line
Gary Complex	MW01	L2005869	Column M099	Pickle Line	Ground	MW01-142	Pickle Line
Gary Complex	MW01	L2005870	Southwest Electrical Room	Pickle Line	Ground	MW01-176	Pickle Line
Gary Complex	MW01	L2005871	Southwest Electrical Room	Pickle Line	Ground	MW01-177	Pickle Line
Gary Complex	MW01	L2005872	Basement Column M080B	Pickle Line	Basement	MW01-121	Pickle Line
Gary Complex	MW01	L2005873	B- South End Basement	Pickle Line	Basement	MW01-112	Pickle Line
Gary Complex	MW01	L2005874	B- South End Basement	Pickle Line	Basement	MW01-114	Pickle Line



### USS Midwest Plant Fire Extinguishers

Plant	District	Location Code	Location Description	Department	Floor Reference	Target	Zone
Gary Complex	MW01	L2005875	B- South End Basement	Pickle Line	Basement	MW01-113	Pickle Line
Gary Complex	MW01	L2005876	Basement Column M078B	Pickle Line	Basement	MW01-120	Pickle Line
Gary Complex	MW01	L2005877	Basement Column M071B	Pickle Line	Basement	MW01-117	Pickle Line
Gary Complex	MW01	L2005880	South End Extinguisher	Pickle Line	Ground	MW01-171	Pickle Line
Gary Complex	MW01	L2005881	South End Extinguisher	Pickle Line	Ground	MW01-172	Pickle Line
Gary Complex	MW01	L2005882	South End Extinguisher	Pickle Line	Ground	MW01-173	Pickle Line
Gary Complex	MW01	L2005883	South End Extinguisher	Pickle Line	Ground	MW01-174	Pickle Line
Gary Complex	MW01	L2005898	Interceptor South Wall	Utilities	Main	MW01-214	Utilities
Gary Complex	MW01	L2005900	Interceptor West Wall	Utilities	Main	MW01-213	Utilities
Gary Complex	MW01	L2005925	Column JK44	Sheet Temper	Ground	MW01-039	Sheet Temper
Gary Complex	MW01	L2005927	Column K43	Sheet Temper	Ground	MW01-041	Sheet Temper
Gary Complex	MW01	L2005960	Outside at the South End	Batch Anne	Ground	MW01-026	Batch Anne
Gary Complex	MW01	L2005961	Electrical Room Column H34	Batch Anne	Ground	MW01-017	Batch Anne
Gary Complex	MW01	L2005962	Electrical Room Column HJ51	Batch Anne	Ground	MW01-019	Batch Anne
Gary Complex	MW01	L2007616	Electrical Shop South Wall	80 5 Stand	Ground	MW01-100	80 5 Stand
Gary Complex	MW01	L2007619	B- Electrical Bsmnt Column	80 5 Stand	Basement	MW01-080	80 5 Stand
Gary Complex	MW01	L2007620	B- Electrical Bsmnt Column	80 5 Stand	Basement	MW01-081	80 5 Stand
Gary Complex	MW01	L2007630	Basement Column	Pickle Line	Basement	MW01-116	Pickle Line
Gary Complex	MW01	L2007632	Column LM100	Pickle Line	Ground	MW01-132	Pickle Line
Gary Complex	MW01	L2007633	Safety Island #14	Pickle Line	Ground	MW01-167	Pickle Line
Gary Complex	MW01	L2007634	Safety Island #17	Pickle Line	Ground	MW01-169	Pickle Line
Gary Complex	MW01	L2007636	Basement Column M073B	Pickle Line	Basement	MW01-118	Pickle Line
Gary Complex	MW01	L2008523	North Wall by Man Door	Garage	Main	MW01-185	Garage
Gary Complex	MW01	L2008526	West Wall by Oil Rack	Garage	Main	MW01-181	Garage
Gary Complex	MW01	L3500367	Basement Column M074B	Pickle Line	Basement	MW01-119	Pickle Line
Gary Complex	MW01	L3500953	Lunch Room	Batch Anne	1	MW01-020	Batch Anne
Gary Complex	MW01	L3500963	Column K73 (S.E. Corner Behind Mill)	80 5 Stand	Ground	MW01-093	80 5 Stand
Gary Complex	MW01	L3500968	Asst. Anealers office	Batch Anneal	Main	MW01-022	Batch Anneal
Gary Complex	MW01	L5000002	Safety Island #18	80 5 Stand	Main	MW01-109A	80 5 Stand
Gary Complex	MW01	L5000018	Rear Mill Aisle	80 5 Stand	Main	MW01-092A	80 5 Stand
Gary Complex	MW01	L5000021	West Mandoor	Utilities	Main	MW01-214K	Chrome Treat
Gary Complex	MW01	L5000022	North Mandoor	Utilities	Main	MW01-214H	Chrome Treat
Gary Complex	MW01	L5000023	East Mandoor	Utilities	Main	MW01-214J	Chrome Treat
Gary Complex	MW01	L5000024	South Wall	Utilities	Main	MW01-214L	Chrome Treat
Gary Complex	MW01	L5000025	West Wall	Utilities	Main	MW01-214M	Sludge Building
Gary Complex	MW01	L5000026	South Wall	Utilities	Main	MW01-214G	New Interceptor
Gary Complex	MW01	L5000027	East Wall	Utilities	Main	MW01-214F	New Interceptor
Gary Complex	MW01	L5000028	West Wall	Utilities	Main	MW01-214E	New Interceptor
Gary Complex	MW01	L5000029	North Wall	Utilities	Main	MW01-214D	New Interceptor

### USS Midwest Plant Fire Extinguishers

Plant	District	Location Code	Location Description	Department	Floor Reference	Target	Zone
Gary Complex	MW01	L5000030	North Wall	Utilities	Main	MW01-214C	New Interceptor
Gary Complex	MW01	L5000031	Operators Office	Utilities	Main	MW01-217A	Chrome Treat
Gary Complex	MW01	L5000032	Operators Office	Utilities	Main	MW01-217B	Chrome Treat
Gary Complex	MW01	L5000033	South Wall	Utilities	Main	MW01-214A	Pump House
Gary Complex	MW02	L2003734	Column D79	Tin Warehouse	Ground	MW02-004	Tin Warehouse
Gary Complex	MW02	L2003735	Column D85	Tin Warehouse	Ground	MW02-005	Tin Warehouse
Gary Complex	MW02	L2003736	Column D89	Tin Warehouse	Ground	MW02-006	Tin Warehouse
Gary Complex	MW02	L2003737	Column D93	Tin Warehouse	Ground	MW02-008	Tin Warehouse
Gary Complex	MW02	L2003742	Safety Island # 2 North End	Tin Warehouse	Ground	MW02-014	Tin Warehouse
Gary Complex	MW02	L2003743	Tin Anode Room	Tin Warehouse	Ground	MW02-172	Tin Warehouse
Gary Complex	MW02	L2003747	Column E099	Chrome Line	Ground	MW02-176	Chrome Line
Gary Complex	MW02	L2003947	Safety Island #6	Roll Shop	Ground	MW02-245	Roll Shop
Gary Complex	MW02	L2003949	South End East Wall	Roll Shop	Ground	MW02-243	Roll Shop
Gary Complex	MW02	L2003951	Column G069	Roll Shop	Ground	MW02-242	Roll Shop
Gary Complex	MW02	L2003952	Column G073	Roll Shop	Ground	MW02-241	Roll Shop
Gary Complex	MW02	L2003955	Column G085	Roll Shop	Ground	MW02-239	Roll Shop
Gary Complex	MW02	L2003956	Column G087	Roll Shop	Ground	MW02-238	Roll Shop
Gary Complex	MW02	L2003957	North End Shot Blaster	Roll Shop	Ground	MW02-237	Roll Shop
Gary Complex	MW02	L2003958	North Shot Blaster	Roll Shop	1	MW02-236	Roll Shop
Gary Complex	MW02	L2003962	Column G089	Roll Shop	Ground	MW02-235	Roll Shop
Gary Complex	MW02	L2003963	Column G090	Roll Shop	Ground	MW02-234	Roll Shop
Gary Complex	MW02	L2003964	Column GF095	Roll Shop	Ground	MW02-233	Roll Shop
Gary Complex	MW02	L2003965	Column F089	Roll Shop	Ground	MW02-232	Roll Shop
Gary Complex	MW02	L2003966	Column F085	Roll Shop	Ground	MW02-231	Roll Shop
Gary Complex	MW02	L2003968	Column F077	Roll Shop	Ground	MW02-229	Roll Shop
Gary Complex	MW02	L2003969	Column F073	Roll Shop	Ground	MW02-228	Roll Shop
Gary Complex	MW02	L2003970	Column F069	Roll Shop	Ground	MW02-227	Roll Shop
Gary Complex	MW02	L2003971	South End Shot Blaster	Roll Shop	Ground	MW02-226	Roll Shop
Gary Complex	MW02	L2003972	South Shot Blaster	Roll Shop	1	MW02-225	Roll Shop
Gary Complex	MW02	L2003996	Column D75B	Tin Warehouse	Basement	MW02-019	Tin Warehouse
Gary Complex	MW02	L2003998	West Wall Column C91	Tin Warehouse	Ground	MW02-007	Tin Warehouse
Gary Complex	MW02	L2003999	Basement Column DE81B	Tin Warehouse	Basement	MW02-018	Tin Warehouse
Gary Complex	MW02	L2004674	Chrome Line Inspectors Booth	Quality Assurance	1	MW02-170	Quality Assurance
Gary Complex	MW02	L2004675	Tin Lab Hallway	Quality Assurance	Ground	MW02-159	Quality Assurance
Gary Complex	MW02	L2004676	Tin Lab SX Prep.	Quality Assurance	Ground	MW02-160	Quality Assurance
Gary Complex	MW02	L2004679	Tin Lab Main - Room 115	Quality Assurance	Ground	MW02-157	Quality Assurance
Gary Complex	MW02	L2004680	Tin Lab Main - Room 115	Quality Assurance	Ground	MW02-156	Quality Assurance
Gary Complex	MW02	L2004682	Tin Lab Special Properties Lab -	Quality Assurance	Ground	MW02-158	Quality Assurance
Gary Complex	MW02	L2004683	Tin Lab North Hall - Room 217	Quality Assurance	1	MW02-163	Quality Assurance

### USS Midwest Plant Fire Extinguishers

Plant	District	Location Code	Location Description	Department	Floor Reference	Target	Zone
Gary Complex	MW02	L2004684	Tin Lab North Hall - Room 217	Quality Assurance	1	MW02-162	Quality Assurance
Gary Complex	MW02	L2004685	Tin Lab Office - Room 221	Quality Assurance	1	MW02-161	Quality Assurance
Gary Complex	MW02	L2004686	Tin Chem Lab-Counter	Quality Assurance	1	MW02-164	Quality Assurance
Gary Complex	MW02	L2004688	Tin Chem Lab - Room 215	Quality Assurance	1	MW02-166	Quality Assurance
Gary Complex	MW02	L2004690	Tin Lab QA Office - South	Quality Assurance	1	MW02-168	Quality Assurance
Gary Complex	MW02	L2004691	Tin Lab QA Office - South	Quality Assurance	1	MW02-167	Quality Assurance
Gary Complex	MW02	L2004693	ETL Inspectors Booth	Quality Assurance	1	MW02-198	Quality Assurance
Gary Complex	MW02	L2004701	Plater Column FE100U1	Tin Line	1	MW02-206	Tin Line
Gary Complex	MW02	L2004702	Plater Column FE95U1	Tin Line	1	MW02-201	Tin Line
Gary Complex	MW02	L2004703	Plater Column FE93U2	Tin Line	2	MW02-202	Tin Line
Gary Complex	MW02	L2004704	Plater Column F96U2	Tin Line	2	MW02-205	Tin Line
Gary Complex	MW02	L2004705	Plater Column FE99U2	Tin Line	2	MW02-204	Tin Line
Gary Complex	MW02	L2004706	Plater Column FE96U2	Tin Line	2	MW02-203	Tin Line
Gary Complex	MW02	L2004720	48" Pot Ext. Island	48" Galvanize	Ground	MW02-125	48" Galvanize
Gary Complex	MW02	L2004728	Column F24	48" Galvanize	Ground	MW02-135	48" Galvanize
Gary Complex	MW02	L2004729	Column F20	48" Galvanize	Ground	MW02-136	48" Galvanize
Gary Complex	MW02	L2004731	Column F35	48" Galvanize	Ground	MW02-132	48" Galvanize
Gary Complex	MW02	L2004732	Column F38	48" Galvanize	Ground	MW02-131	48" Galvanize
Gary Complex	MW02	L2004733	Column FG44	48" Galvanize	Ground	MW02-124	48" Galvanize
Gary Complex	MW02	L2004734	Column FG44	48" Galvanize	Ground	MW02-123	48" Galvanize
Gary Complex	MW02	L2004751	Entry Hydr. Bsmnt.	72" Galvanize	Basement	MW02-111	72" Galvanize
Gary Complex	MW02	L2004752	Entry Elect. Bsmnt. Col. D57B	72" Galvanize	Basement	MW02-113	72" Galvanize
Gary Complex	MW02	L2004753	Del. Elect. Bsmnt. - Col.	72" Galvanize	Basement	MW02-116	72" Galvanize
Gary Complex	MW02	L2004754	Del. Elect. Bsmnt. - Col.	72" Galvanize	Basement	MW02-117	72" Galvanize
Gary Complex	MW02	L2004755	Column F45B	48" Galvanize	Basement	MW02-144	48" Galvanize
Gary Complex	MW02	L2004756	Column F45B	48" Galvanize	Basement	MW02-143	48" Galvanize
Gary Complex	MW02	L2004757	Column FG46B	48" Galvanize	Basement	MW02-142	48" Galvanize
Gary Complex	MW02	L2004758	Column F43B	48" Galvanize	Basement	MW02-141	48" Galvanize
Gary Complex	MW02	L2004759	Column F39B	48" Galvanize	Basement	MW02-140	48" Galvanize
Gary Complex	MW02	L2004760	Column F35B	48" Galvanize	Basement	MW02-139	48" Galvanize
Gary Complex	MW02	L2004761	Column F35B	48" Galvanize	Basement	MW02-138	48" Galvanize
Gary Complex	MW02	L2004762	Column F31B	48" Galvanize	Basement	MW02-137	48" Galvanize
Gary Complex	MW02	L2004763	Column F49B	48" Galvanize	Basement	MW02-145	48" Galvanize
Gary Complex	MW02	L2004764	Column F51B	48" Galvanize	Basement	MW02-146	48" Galvanize
Gary Complex	MW02	L2004765	Column F53B	48" Galvanize	Basement	MW02-147	48" Galvanize
Gary Complex	MW02	L2004766	Column F57B	48" Galvanize	Basement	MW02-148	48" Galvanize
Gary Complex	MW02	L2004767	Column F59B	48" Galvanize	Basement	MW02-149	48" Galvanize
Gary Complex	MW02	L2004768	Column F61B	48" Galvanize	Basement	MW02-150	48" Galvanize
Gary Complex	MW02	L2004769	Column EF59	48" Galvanize	Ground	MW02-118	48" Galvanize

### USS Midwest Plant Fire Extinguishers

Plant	District	Location Code	Location Description	Department	Floor Reference	Target	Zone
Gary Complex	MW02	L2004770	Safety Island # 20	48" Galvanize	Ground	MW02-119	48" Galvanize
Gary Complex	MW02	L2004771	Safety Island #20	48" Galvanize	Ground	MW02-120	48" Galvanize
Gary Complex	MW02	L2004773	Column EF50	48" Galvanize	Ground	MW02-121	48" Galvanize
Gary Complex	MW02	L2004774	Column EF48	48" Galvanize	Ground	MW02-122	48" Galvanize
Gary Complex	MW02	L2005051	Tin Anode Room	Tin Warehouse	Ground	MW02-173	Tin Warehouse
Gary Complex	MW02	L2005053	Safety Island #2	Tin Warehouse	Ground	MW02-013	Tin Warehouse
Gary Complex	MW02	L2005055	North End Column D117	Tin Warehouse	Ground	MW02-016	Tin Warehouse
Gary Complex	MW02	L2005056	Column C117	Tin Warehouse	Ground	MW02-017	Tin Warehouse
Gary Complex	MW02	L2005073	Bsmt. Col. DE98B	Chrome Line	Basement	MW02-186	Chrome Line
Gary Complex	MW02	L2005074	Bsmt. Col. DE103B	Chrome Line	Basement	MW02-194	Chrome Line
Gary Complex	MW02	L2005075	Bsmt. Col. DE93B	Chrome Line	Basement	MW02-195	Chrome Line
Gary Complex	MW02	L2005077	Bsmt. Col. DE91B	Chrome Line	Basement	MW02-196	Chrome Line
Gary Complex	MW02	L2005078	Del. End Hyd. Bsmnt.	Chrome Line	Basement	MW02-197	Chrome Line
Gary Complex	MW02	L2005079	Elect. Bsmnt. Col. E90B	Chrome Line	Basement	MW02-190	Chrome Line
Gary Complex	MW02	L2005080	Elect. Bsmnt. Col. EF91B	Chrome Line	Basement	MW02-189	Chrome Line
Gary Complex	MW02	L2005081	Elect. Bsmnt. Col. EF93B	Chrome Line	Basement	MW02-188	Chrome Line
Gary Complex	MW02	L2005082	S. End Hyd. Bsmnt.	Chrome Line	Basement	MW02-191	Chrome Line
Gary Complex	MW02	L2005083	Pickler Sub Bsmnt. Column	Chrome Line	Basement	MW02-192	Chrome Line
Gary Complex	MW02	L2005084	Pickler Sub Bsmnt. Column	Chrome Line	Basement	MW02-193	Chrome Line
Gary Complex	MW02	L2005089	Column EF101	Chrome Line	Ground	MW02-180	Chrome Line
Gary Complex	MW02	L2005094	Column EF099	Chrome Line	Ground	MW02-177	Chrome Line
Gary Complex	MW02	L2005096	Safety Island #3	Chrome Line	Ground	MW02-153	Chrome Line
Gary Complex	MW02	L2005097	Safety Island # 3	Chrome Line	Ground	MW02-152	Chrome Line
Gary Complex	MW02	L2005098	Column E89	Chrome Line	Ground	MW02-151	Chrome Line
Gary Complex	MW02	L2005099	Column E92	Chrome Line	Ground	MW02-171	Chrome Line
Gary Complex	MW02	L2005100	Column E95	Chrome Line	Ground	MW02-175	Chrome Line
Gary Complex	MW02	L2005101	Column E101	Chrome Line	Ground	MW02-182	Chrome Line
Gary Complex	MW02	L2005102	Column E105	Chrome Line	Ground	MW02-183	Chrome Line
Gary Complex	MW02	L2005122	Column FE111	Tin Line	Ground	MW02-210	Tin Line
Gary Complex	MW02	L2005123	Safety Island #4	Tin Line	Ground	MW02-209	Tin Line
Gary Complex	MW02	L2005124	Safety Island #4	Tin Line	Ground	MW02-208	Tin Line
Gary Complex	MW02	L2005127	Pizza Hut Conference	Chrome Line	Ground	MW02-154	Chrome Line
Gary Complex	MW02	L2005128	Column F090	Tin Line	Ground	MW02-199	Tin Line
Gary Complex	MW02	L2005129	Bsmt. Column F091B	Tin Line	Basement	MW02-218	Tin Line
Gary Complex	MW02	L2005130	Elect. Bsmt. Col. EF93B	Tin Line	Basement	MW02-219	Tin Line
Gary Complex	MW02	L2005131	Elect. Bsmt. Col. EF97B	Tin Line	Basement	MW02-220	Tin Line
Gary Complex	MW02	L2005132	Elect. Bsmt. Col. EF98B	Tin Line	Basement	MW02-221	Tin Line
Gary Complex	MW02	L2005133	Elect. Bsmt. Col. EF101B	Tin Line	Basement	MW02-222	Tin Line
Gary Complex	MW02	L2005134	Elect. Bsmt. Col. EF105B	Tin Line	Basement	MW02-223	Tin Line

### USS Midwest Plant Fire Extinguishers

Plant	District	Location Code	Location Description	Department	Floor Reference	Target	Zone
Gary Complex	MW02	L2005135	Bsmt. Column F111B	Tin Line	Basement	MW02-224	Tin Line
Gary Complex	MW02	L2005136	Column F111	Tin Line	Ground	MW02-213	Tin Line
Gary Complex	MW02	L2005137	Column F107	Tin Line	Ground	MW02-214	Tin Line
Gary Complex	MW02	L2005138	Column F101	Tin Line	Ground	MW02-215	Tin Line
Gary Complex	MW02	L2005139	Column F098	Tin Line	Ground	MW02-216	Tin Line
Gary Complex	MW02	L2005140	Column F095	Tin Line	Ground	MW02-217	Tin Line
Gary Complex	MW02	L2005141	Column F113	Tin Line	Ground	MW02-212	Tin Line
Gary Complex	MW02	L2005485	Locker Room # 8	Locker Room	1	MW02-037	Locker Room
Gary Complex	MW02	L2005486	Locker Room # 8	Locker Room	1	MW02-036	Locker Room
Gary Complex	MW02	L2005487	Locker Room # 7	Locker Room	1	MW02-035	Locker Room
Gary Complex	MW02	L2005488	Locker Room # 7	Locker Room	1	MW02-034	Locker Room
Gary Complex	MW02	L2005489	Locker Room # 6	Locker Room	1	MW02-033	Locker Room
Gary Complex	MW02	L2005490	Locker Room # 6	Locker Room	1	MW02-032	Locker Room
Gary Complex	MW02	L2005491	Locker Room # 5	Locker Room	1	MW02-031	Locker Room
Gary Complex	MW02	L2005492	Locker Room # 5	Locker Room	1	MW02-030	Locker Room
Gary Complex	MW02	L2005493	Locker Room # 4	Locker Room	1	MW02-029	Locker Room
Gary Complex	MW02	L2005494	Locker Room # 4	Locker Room	1	MW02-028	Locker Room
Gary Complex	MW02	L2005495	Locker Room # 3	Locker Room	1	MW02-027	Locker Room
Gary Complex	MW02	L2005496	Locker Room # 3	Locker Room	1	MW02-026	Locker Room
Gary Complex	MW02	L2005497	Locker Room # 2	Locker Room	1	MW02-025	Locker Room
Gary Complex	MW02	L2005498	Locker Room # 2	Locker Room	1	MW02-024	Locker Room
Gary Complex	MW02	L2005499	Locker Room # 1	Locker Room	1	MW02-023	Locker Room
Gary Complex	MW02	L2005500	Locker Room # 1	Locker Room	1	MW02-022	Locker Room
Gary Complex	MW02	L2005570	Column EF43 U2	72" Galvanize	1	MW02-099	72" Galvanize
Gary Complex	MW02	L2005571	Column EF45 U2	72" Galvanize	2	MW02-100	72" Galvanize
Gary Complex	MW02	L2005572	Column EF44	72" Galvanize	Ground	MW02-101	72" Galvanize
Gary Complex	MW02	L2005573	Column EF49	72" Galvanize	Ground	MW02-102	72" Galvanize
Gary Complex	MW02	L2005574	Column EF51	72" Galvanize	Ground	MW02-103	72" Galvanize
Gary Complex	MW02	L2005575	Seal Roll Ext. Island	72" Galvanize	Ground	MW02-107	72" Galvanize
Gary Complex	MW02	L2005576	Seal Roll Ext. Island	72" Galvanize	Ground	MW02-106	72" Galvanize
Gary Complex	MW02	L2005577	Seal Roll Ext. Island	72" Galvanize	Ground	MW02-105	72" Galvanize
Gary Complex	MW02	L2005578	Seal Roll Ext. Island	72" Galvanize	Ground	MW02-104	72" Galvanize
Gary Complex	MW02	L2005581	Column EF58U3	72" Galvanize	3	MW02-108	72" Galvanize
Gary Complex	MW02	L2005582	Column EF58	72" Galvanize	Ground	MW02-109	72" Galvanize
Gary Complex	MW02	L2005583	Entry End Pulpit	72" Galvanize	Ground	MW02-110	72" Galvanize
Gary Complex	MW02	L2005585	N. Galv. Maint. Area Col. DE66	72" Galvanize	Ground	MW02-038	72" Galvanize
Gary Complex	MW02	L2005586	Entry Control Room	72" Galvanize	Ground	MW02-040	72" Galvanize
Gary Complex	MW02	L2005587	Galvanize Elect. Shop	72" Galvanize	Ground	MW02-041	72" Galvanize
Gary Complex	MW02	L2005588	Column E55	72" Galvanize	Ground	MW02-042	72" Galvanize

### USS Midwest Plant Fire Extinguishers

Plant	District	Location Code	Location Description	Department	Floor Reference	Target	Zone
Gary Complex	MW02	L2005589	Cleaner Control Room	72" Galvanize	Ground	MW02-043	72" Galvanize
Gary Complex	MW02	L2005590	Column E49	72" Galvanize	Ground	MW02-051	72" Galvanize
Gary Complex	MW02	L2005591	Office Area Column EF49	72" Galvanize	Ground	MW02-052	72" Galvanize
Gary Complex	MW02	L2005592	Man Elevator 6th Floor	72" Galvanize	6	MW02-058	72" Galvanize
Gary Complex	MW02	L2005593	Cooling Tower - 3rd Floor	72" Galvanize	3	MW02-059	72" Galvanize
Gary Complex	MW02	L2005594	Cooling Tower - 7th Floor	72" Galvanize	7	MW02-064	72" Galvanize
Gary Complex	MW02	L2005595	Cooling Tower - 7th Floor	72" Galvanize	7	MW02-065	72" Galvanize
Gary Complex	MW02	L2005596	Cooling Tower - 6th Floor	72" Galvanize	6	MW02-063	72" Galvanize
Gary Complex	MW02	L2005597	Cooling Tower - 5th Floor	72" Galvanize	5	MW02-062	72" Galvanize
Gary Complex	MW02	L2005598	Cooling Tower - 4th Floor	72" Galvanize	4	MW02-061	72" Galvanize
Gary Complex	MW02	L2005599	Man Elevator 4th Floor	72" Galvanize	4	MW02-056	72" Galvanize
Gary Complex	MW02	L2005600	Column E37	72" Galvanize	Ground	MW02-068	72" Galvanize
Gary Complex	MW02	L2005601	Skin Pass Control Room	72" Galvanize	Ground	MW02-069	72" Galvanize
Gary Complex	MW02	L2005602	Skin Pass Control Room	72" Galvanize	Ground	MW02-070	72" Galvanize
Gary Complex	MW02	L2005603	Jet Cool Control Rm.	72" Galvanize	Ground	MW02-071	72" Galvanize
Gary Complex	MW02	L2005604	Jet Cool Control Rm. N.	72" Galvanize	Ground	MW02-072	72" Galvanize
Gary Complex	MW02	L2005605	Galvanize Spectrometer Rm.	Quality Assurance	Ground	MW02-074	Quality Assurance
Gary Complex	MW02	L2005606	Galvanize Spectrometer Area	Quality Assurance	Ground	MW02-075	Quality Assurance
Gary Complex	MW02	L2005607	Column E29	72" Galvanize	Ground	MW02-077	72" Galvanize
Gary Complex	MW02	L2005608	Del. End Column E27B	72" Galvanize	Basement	MW02-078	72" Galvanize
Gary Complex	MW02	L2005610	Delivery Control Rm.	72" Galvanize	Ground	MW02-081	72" Galvanize
Gary Complex	MW02	L2005611	Column EF24	72" Galvanize	Ground	MW02-084	72" Galvanize
Gary Complex	MW02	L2005612	Vertical Inspectors	72" Galvanize	1	MW02-087	72" Galvanize
Gary Complex	MW02	L2005614	Column EF27	72" Galvanize	Ground	MW02-085	72" Galvanize
Gary Complex	MW02	L2005615	Column EF31	72" Galvanize	Ground	MW02-088	72" Galvanize
Gary Complex	MW02	L2005616	Column EF33	72" Galvanize	Ground	MW02-089	72" Galvanize
Gary Complex	MW02	L2005617	Column EF35	72" Galvanize	Ground	MW02-090	72" Galvanize
Gary Complex	MW02	L2005618	Column EF37	72" Galvanize	Ground	MW02-091	72" Galvanize
Gary Complex	MW02	L2005619	Column DE37	72" Galvanize	Ground	MW02-092	72" Galvanize
Gary Complex	MW02	L2005620	Safety Island #1 Column EF37	72" Galvanize	Ground	MW02-094	72" Galvanize
Gary Complex	MW02	L2005621	Safety Island #1 Column EF37	72" Galvanize	Ground	MW02-093	72" Galvanize
Gary Complex	MW02	L2005622	Main Control Booth	72" Galvanize	Ground	MW02-095	72" Galvanize
Gary Complex	MW02	L2005625	Computer Room - Pot	72" Galvanize	1	MW02-096	72" Galvanize
Gary Complex	MW02	L2005626	Column EF40	72" Galvanize	Ground	MW02-097	72" Galvanize
Gary Complex	MW02	L2005627	Column EF42	72" Galvanize	Ground	MW02-098	72" Galvanize
Gary Complex	MW02	L2005628	Furnace Control Room	72" Galvanize	Ground	MW02-053	72" Galvanize
Gary Complex	MW02	L2005629	Furnace Control Room	72" Galvanize	Ground	MW02-054	72" Galvanize
Gary Complex	MW02	L2005664	Galvanize Upstairs Office	Quality Assurance	1	MW02-046	Quality Assurance
Gary Complex	MW02	L2005665	Coated Products Office	72" Galvanize	1	MW02-045	72" Galvanize

### USS Midwest Plant Fire Extinguishers

Plant	District	Location Code	Location Description	Department	Floor Reference	Target	Zone
Gary Complex	MW02	L2005666	Coated Products Conference Rm.	72" Galvanize	1	MW02-044	72" Galvanize
Gary Complex	MW02	L2005667	Galvanize Tinsel Lab - Northeast	Quality Assurance	Ground	MW02-048	Quality Assurance
Gary Complex	MW02	L2005669	Galvanize Tinsel Lab - Southeast	Quality Assurance	Ground	MW02-049	Quality Assurance
Gary Complex	MW02	L2005670	Galvanize Tinsel Lab - Southeast	Quality Assurance	Ground	MW02-050	Quality Assurance
Gary Complex	MW02	L2005736	Joy Air Compressor	Utilities	Basement	MW02-020	Tin Warehouse
Gary Complex	MW02	L2005737	Joy Air Compressor	Utilities	Basement	MW02-021	Tin Warehouse
Gary Complex	MW02	L2005773	#7 Air Compressor	72" Galvanize	Ground	MW02-082	72" Galvanize
Gary Complex	MW02	L2005774	#7 Air Compressor	72" Galvanize	Ground	MW02-083	72" Galvanize
Gary Complex	MW02	L2005843	Tin Chem Lab-Counter	Quality Assurance	1	MW02-165	Quality Assurance
Gary Complex	MW02	L2005907	Tin Lab Room 210	Quality Assurance	1	MW02-169	Quality Assurance
Gary Complex	MW02	L2005919	ERT Room	Roll Shop	1	MW02-230	Roll Shop
Gary Complex	MW02	L2005922	Column G079	Roll Shop	Ground	MW02-240	Roll Shop
Gary Complex	MW02	L2005933	Goat Shack S. End of 48"	Quality Assurance	Ground	MW02-134	Quality Assurance
Gary Complex	MW02	L2005948	Column EF95	Chrome Line	Ground	MW02-174	Chrome Line
Gary Complex	MW02	L2005951	Center Ext. Island	Chrome Line	Ground	MW02-178	Chrome Line
Gary Complex	MW02	L2005952	Center Ext. Island	Chrome Line	Ground	MW02-179	Chrome Line
Gary Complex	MW02	L2005953	Column EF103	Chrome Line	Ground	MW02-181	Chrome Line
Gary Complex	MW02	L2005956	Column FE095	Tin Line	Ground	MW02-200	Tin Line
Gary Complex	MW02	L2005993	Man Elevator 5th Floor	72" Galvanize	5	MW02-057	72" Galvanize
Gary Complex	MW02	L2005994	Cooling Tower - 2nd Floor	72" Galvanize	2	MW02-060	72" Galvanize
Gary Complex	MW02	L2008191	Galvanize Tinsel Lab - Northeast	Quality Assurance	Ground	MW02-047	Quality Assurance
Gary Complex	MW02	L2008503	Column D61	Tin Warehouse	Ground	MW02-002	Tin Warehouse
Gary Complex	MW02	L2008504	Column D71	Tin Warehouse	Ground	MW02-003	Tin Warehouse
Gary Complex	MW02	L2008505	Column D97	Tin Warehouse	Ground	MW02-009	Tin Warehouse
Gary Complex	MW02	L2008507	Column E62	72" Galvanize	Ground	MW02-039	72" Galvanize
Gary Complex	MW02	L2008509	S. Weld Shop Column E24	72" Galvanize	Ground	MW02-079	72" Galvanize
Gary Complex	MW02	L2008518	Column D103	Tin Warehouse	Ground	MW02-010	Tin Warehouse
Gary Complex	MW02	L2008519	Column D107	Tin Warehouse	Ground	MW02-011	Tin Warehouse
Gary Complex	MW02	L2008520	Column D111	Tin Warehouse	Ground	MW02-012	Tin Warehouse
Gary Complex	MW02	L2008521	North End Column D115	Tin Warehouse	Ground	MW02-015	Tin Warehouse
Gary Complex	MW02	L2008531	Column CD59	Tin Warehouse	Ground	MW02-001	Tin Warehouse
Gary Complex	MW02	L2008539	Vertical Inspectors	72" Galvanize	1	MW02-086	72" Galvanize
Gary Complex	MW02	L3500061	Column F29	48" Galvanize	Ground	MW02-133	48" Galvanize
Gary Complex	MW02	L3500480	Safety Island #6	Roll Shop	Ground	MW02-244	Roll Shop
Gary Complex	MW02	L3500940	Column F115	Tin Line	Ground	MW02-211	Tin Line
Gary Complex	MW02	L3500948	S. End Of Platers Booth	Tin Line	Ground	MW02-207	Tin Line
Gary Complex	MW02	L3500949	Tin Lab Hallway	Quality Assurance	Ground	MW02-155	Quality Assurance
Gary Complex	MW02	L3500954	Maintenance Trailer	72" Galvanize	Ground	MW02-066	72" Galvanize
Gary Complex	MW02	L3500955	Maintenance Trailer	72" Galvanize	Ground	MW02-067	72" Galvanize

### USS Midwest Plant Fire Extinguishers

Plant	District	Location Code	Location Description	Department	Floor Reference	Target	Zone
Gary Complex	MW02	L5000059	Furnace Substation Room	72" Galvanize	Ground	MW02-055	72" Galvanize
Gary Complex	MW02	L5000060	Jet Cool Control Rm. W. Substation	72" Galvanize	Ground	MW02-073	72" Galvanize
Gary Complex	MW02	L5000061	Column E33	72" Galvanize	Ground	MW02-076	72" Galvanize
Gary Complex	MW02	L5000062	Column E23	72" Galvanize	Ground	MW02-080	72" Galvanize
Gary Complex	MW02	L5000063	Entry Elect. Bsmnt. Col. D61B	72" Galvanize	Basement	MW02-112	72" Galvanize
Gary Complex	MW02	L5000064	Entry Elect. Bsmnt. Col. D53B	72" Galvanize	Basement	MW02-114	72" Galvanize
Gary Complex	MW02	L5000065	Entry Elect. Bsmnt. Col. E49B	72" Galvanize	Basement	MW02-115	72" Galvanize
Gary Complex	MW02	L5000066	48" Pot Ext. Island	48" Galvanize	Ground	MW02-126	48" Galvanize
Gary Complex	MW02	L5000067	48" Pot Ext. Island	48" Galvanize	Ground	MW02-127	48" Galvanize
Gary Complex	MW02	L5000068	48" Pot Ext. Island	48" Galvanize	Ground	MW02-128	48" Galvanize
Gary Complex	MW02	L5000069	48" Pot Ext. Island	48" Galvanize	Ground	MW02-129	48" Galvanize
Gary Complex	MW02	L5000070	48" Pot Ext. Island	48" Galvanize	Ground	MW02-130	48" Galvanize
Gary Complex	MW02	L5000071	Entry End Elect. Bsmt.	Chrome Line	Basement	MW02-184	Chrome Line
Gary Complex	MW02	L5000072	Entry End Hyd Bsmt	Chrome Line	Basement	MW02-185	Chrome Line
Gary Complex	MW02	L5000073	Column EF95B	Chrome Line	Basement	MW02-187	Chrome Line
Gary Complex	MW02	L5000255	Next to 23W inside	Sheet	Ground	MW02-270	
Gary Complex	MW03	L2003751	Column NO47	3 Galvanize	Ground	MW03-137	3 Galvanize
Gary Complex	MW03	L2003752	Column O40	3 Galvanize	Ground	MW03-144	3 Galvanize
Gary Complex	MW03	L2003753	Column O37	3 Galvanize	Ground	MW03-143	3 Galvanize
Gary Complex	MW03	L2003754	Column O43	3 Galvanize	Ground	MW03-145	3 Galvanize
Gary Complex	MW03	L2003755	Column O34	3 Galvanize	Ground	MW03-142	3 Galvanize
Gary Complex	MW03	L2003756	Column O30	3 Galvanize	Ground	MW03-141	3 Galvanize
Gary Complex	MW03	L2003757	Column O27 computer	3 Galvanize	Ground	MW03-140	3 Galvanize
Gary Complex	MW03	L2003758	Column NO27	3 Galvanize	Ground	MW03-136	3 Galvanize
Gary Complex	MW03	L2003759	Deck 1 Column O20	3 Galvanize	1	MW03-150A	3 Galvanize
Gary Complex	MW03	L2003760	Deck 1 column O30	3 Galvanize	1	MW03-150	3 Galvanize
Gary Complex	MW03	L2003761	Deck 1 column O35	3 Galvanize	1	MW03-151	3 Galvanize
Gary Complex	MW03	L2003762	Deck 1 column N35	3 Galvanize	1	MW03-148	3 Galvanize
Gary Complex	MW03	L2003763	Deck 1 column N30	3 Galvanize	1	MW03-147	3 Galvanize
Gary Complex	MW03	L2003764	Deck 1 column N22	3 Galvanize	1	MW03-146	3 Galvanize
Gary Complex	MW03	L2003765	Column O20	3 Galvanize	Main	MW03-156A	
Gary Complex	MW03	L2003766	Pot area safety island #31	3 Galvanize	Ground	MW03-156	3 Galvanize
Gary Complex	MW03	L2003767	Pot area safety island #31	3 Galvanize	Ground	MW03-155	3 Galvanize
Gary Complex	MW03	L2003768	Basement column ON19B	3 Galvanize	Basement	MW03-127	3 Galvanize
Gary Complex	MW03	L2003769	Column NO16	3 Galvanize	Ground	MW03-135	3 Galvanize
Gary Complex	MW03	L2003770	Column NO12	3 Galvanize	Ground	MW03-134	3 Galvanize
Gary Complex	MW03	L2003771	Column O08	3 Galvanize	Ground	MW03-138	3 Galvanize
Gary Complex	MW03	L2003772	Acrylic tower deck 1	3 Galvanize	1	MW03-121	3 Galvanize
Gary Complex	MW03	L2003773	Acrylic tower deck 2	3 Galvanize	2	MW03-122	3 Galvanize



### USS Midwest Plant Fire Extinguishers

Plant	District	Location Code	Location Description	Department	Floor Reference	Target	Zone
Gary Complex	MW03	L2003780	South end safety island	3 Galvanize	Ground	MW03-158	3 Galvanize
Gary Complex	MW03	L2003781	South end safety island	3 Galvanize	Ground	MW03-157	3 Galvanize
Gary Complex	MW03	L2003784	Column N19	3 Galvanize	Ground	MW03-128	3 Galvanize
Gary Complex	MW03	L2003785	Column N24	3 Galvanize	Ground	MW03-129	3 Galvanize
Gary Complex	MW03	L2003786	2nd floor office	3 Galvanize	2	MW03-116	3 Galvanize
Gary Complex	MW03	L2003787	2nd floor office	3 Galvanize	2	MW03-115	3 Galvanize
Gary Complex	MW03	L2003788	2nd floor office	3 Galvanize	2	MW03-114	3 Galvanize
Gary Complex	MW03	L2003789	2nd floor office	3 Galvanize	2	MW03-113	3 Galvanize
Gary Complex	MW03	L2003790	Column N29 - weld shop	3 Galvanize	Ground	MW03-131	3 Galvanize
Gary Complex	MW03	L2003792	Column N31 - weld shop	3 Galvanize	Ground	MW03-132	3 Galvanize
Gary Complex	MW03	L2003793	Column N29	3 Galvanize	Ground	MW03-130	3 Galvanize
Gary Complex	MW03	L2003794	Column N35	3 Galvanize	Ground	MW03-133	3 Galvanize
Gary Complex	MW03	L2003795	Safety island #30 n. end	3 Galvanize	Ground	MW03-152	3 Galvanize
Gary Complex	MW03	L2003796	Safety island #30 n. end	3 Galvanize	Ground	MW03-153	3 Galvanize
Gary Complex	MW03	L2003803	Medical - back hallway	AE-1	Main	MW03-003	AE-1
Gary Complex	MW03	L2003804	Medical - back hallway	AE-1	Main	MW03-004	AE-1
Gary Complex	MW03	L2003805	Medical - treatment room	AE-1	Main	MW03-002	AE-1
Gary Complex	MW03	L2003806	Medical - hallway entrance	AE-1	Main	MW03-001	AE-1
Gary Complex	MW03	L2003807	Northwest hallway	AE-1	Main	MW03-016	AE-1
Gary Complex	MW03	L2003808	Reproduction room	AE-1	Main	MW03-009	AE-1
Gary Complex	MW03	L2003809	Northeast hallway	AE-1	Main	MW03-017	AE-1
Gary Complex	MW03	L2003810	East entrance	AE-1	Main	MW03-014	AE-1
Gary Complex	MW03	L2003811	Southeast hallway	AE-1	Main	MW03-013	AE-1
Gary Complex	MW03	L2003812	Southeast hallway	AE-1	Main	MW03-012	AE-1
Gary Complex	MW03	L2003813	South boiler room	AE-1	Main	MW03-008	AE-1
Gary Complex	MW03	L2003814	Southwest hallway	AE-1	Main	MW03-010	AE-1
Gary Complex	MW03	L2003815	Southwest hallway	AE-1	Main	MW03-011	AE-1
Gary Complex	MW03	L2003818	Cafeteria	AE-1	Main	MW03-018	AE-1
Gary Complex	MW03	L2003819	West entrance door	AE-1	Main	MW03-019	AE-1
Gary Complex	MW03	L2003820	Northwest boiler room	AE-1	Main	MW03-015	AE-1
Gary Complex	MW03	L2003821	Outside - west side parking	AE-1	Main	MW03-020	AE-1
Gary Complex	MW03	L2003824	Column M11	55 Warehouse	Ground	MW03-096A	55 Warehouse
Gary Complex	MW03	L2003825	Column M05	55 Warehouse	Ground	MW03-096	55 Warehouse
Gary Complex	MW03	L2003826	Column M01	55 Warehouse	Ground	MW03-095	55 Warehouse
Gary Complex	MW03	L2003827	Column L01	55 Warehouse	Ground	MW03-091	55 Warehouse
Gary Complex	MW03	L2003828	Column L05	55 Warehouse	Ground	MW03-092	55 Warehouse
Gary Complex	MW03	L2003829	Column L11	55 Warehouse	Ground	MW03-093	55 Warehouse
Gary Complex	MW03	L2003830	Column L15	55 Warehouse	Ground	MW03-094	55 Warehouse
Gary Complex	MW03	L2003831	Column L21	54 Warehouse	Ground	MW03-083	54 Warehouse

### USS Midwest Plant Fire Extinguishers

Plant	District	Location Code	Location Description	Department	Floor Reference	Target	Zone
Gary Complex	MW03	L2003832	Column L27	54 Warehouse	Ground	MW03-084	54 Warehouse
Gary Complex	MW03	L2003833	Shippers office	54 Warehouse	Ground	MW03-090	54 Warehouse
Gary Complex	MW03	L2003834	Column L37	54 Warehouse	Ground	MW03-086	54 Warehouse
Gary Complex	MW03	L2003835	Column L33	54 Warehouse	Ground	MW03-085	54 Warehouse
Gary Complex	MW03	L2003836	Safety island #15	54 Warehouse	Ground	MW03-088	54 Warehouse
Gary Complex	MW03	L2003837	Safety island #15	54 Warehouse	Ground	MW03-089	54 Warehouse
Gary Complex	MW03	L2003838	North end column L45	Combo	Ground	MW03-178	Combo Line
Gary Complex	MW03	L2003839	Column L50	54 Warehouse	Ground	MW03-087	54 Warehouse
Gary Complex	MW03	L2003842	Column LM47	Combo	Ground	MW03-172	Combo Line
Gary Complex	MW03	L2003843	North end combo maintenance	Combo	Ground	MW03-179	Combo Line
Gary Complex	MW03	L2003844	North end combo maintenance	Combo	Ground	MW03-180	Combo Line
Gary Complex	MW03	L2003845	North end combo maintenance	Combo	Ground	MW03-181	Combo Line
Gary Complex	MW03	L2003849	Column M33	Combo	Ground	MW03-175	Combo Line
Gary Complex	MW03	L2003850	Safety island #12	Combo	Ground	MW03-187	Combo Line
Gary Complex	MW03	L2003851	Safety island #12	Combo	Ground	MW03-188	Combo Line
Gary Complex	MW03	L2003852	Column M28	Combo	Ground	MW03-174	Combo Line
Gary Complex	MW03	L2003853	Column M27	Combo	Ground	MW03-173	Combo Line
Gary Complex	MW03	L2003854	Column L27	Combo	Ground	MW03-166	Combo Line
Gary Complex	MW03	L2003855	Delivery end hydraulic bsmt.	Combo	Basement	MW03-159	Combo Line
Gary Complex	MW03	L2003856	Delivery end hydraulic bsmt.	Combo	Basement	MW03-160	Combo Line
Gary Complex	MW03	L2003857	Elect. Bsmt. South wall	Combo	Basement	MW03-163	Combo Line
Gary Complex	MW03	L2003858	Elect. Bsmt. South wall	Combo	Basement	MW03-164	Combo Line
Gary Complex	MW03	L2003859	Elect. Bsmt. North wall	Combo	Basement	MW03-161	Combo Line
Gary Complex	MW03	L2003860	Elect. Bsmt. North wall	Combo	Basement	MW03-162	Combo Line
Gary Complex	MW03	L2003861	Entry end hydraulic bsmt.	Combo	Basement	MW03-165	Combo Line
Gary Complex	MW03	L2003862	Column L37	Combo	Ground	MW03-168	Combo Line
Gary Complex	MW03	L2003863	Column L33	Combo	Ground	MW03-167	Combo Line
Gary Complex	MW03	L2003864	Column L41	Combo	Ground	MW03-169	Combo Line
Gary Complex	MW03	L2003865	North end extinguisher	Combo	Ground	MW03-183	Combo Line
Gary Complex	MW03	L2003866	North end extinguisher	Combo	Ground	MW03-182	Combo Line
Gary Complex	MW03	L2003867	North end extinguisher	Combo	Ground	MW03-185	Combo Line
Gary Complex	MW03	L2003868	North end extinguisher	Combo	Ground	MW03-184	Combo Line
Gary Complex	MW03	L2003869	North end extinguisher	Combo	Ground	MW03-186	Combo Line
Gary Complex	MW03	L2003872	Column LM32	Combo	Ground	MW03-170	Combo Line
Gary Complex	MW03	L2003873	Inside delivery end control	Combo	Ground	MW03-177	Combo Line
Gary Complex	MW03	L2003874	CRT lab	3 Galvanize	Main	MW03-118	Quality Co
Gary Complex	MW03	L2003875	CRT lab	3 Galvanize	Main	MW03-119	Quality Co
Gary Complex	MW03	L2003876	CRT lab	3 Galvanize	Main	MW03-117	Quality Co
Gary Complex	MW03	L2003877	CRT lab	3 Galvanize	Main	MW03-120	Quality Co

### USS Midwest Plant Fire Extinguishers

Plant	District	Location Code	Location Description	Department	Floor Reference	Target	Zone
Gary Complex	MW03	L2003930	Clockhouse	Utilities	Main	MW03-022	Plant Prot
Gary Complex	MW03	L2004713	Safety island #33 s. end	53 Warehouse	Ground	MW03-079	53 Warehouse
Gary Complex	MW03	L2004714	Safety island #33 s. end	53 Warehouse	Ground	MW03-080	53 Warehouse
Gary Complex	MW03	L2004715	Column E14	53 Warehouse	Ground	MW03-075	53 Warehouse
Gary Complex	MW03	L2004717	Column E12	53 Warehouse	Ground	MW03-077	53 Warehouse
Gary Complex	MW03	L2005182	UT 11 IR	Utilities	Ground	MW03051A	
Gary Complex	MW03	L2005196	Truck scale	Plant prot	Main	MW03-029	Plant Prot
Gary Complex	MW03	L2005197	Truck scale	Utilities	Main	MW03-027	Plant Prot
Gary Complex	MW03	L2005198	Truck scale	Plant prot	Main	MW03-030	Plant Prot
Gary Complex	MW03	L2005199	PCB storage	Utilities	Main	MW03-038	Utilities
Gary Complex	MW03	L2005214	Central Receiving	Central Receiving	Main	MW03-192	Central Receiving
Gary Complex	MW03	L2005215	Central Receiving	Central Receiving	Main	MW03-190	Central Receiving
Gary Complex	MW03	L2005216	Central Receiving	Central Receiving	Main	MW03-189	Central Receiving
Gary Complex	MW03	L2005217	Central Receiving	Central Receiving	Main	MW03-191	Central Receiving
Gary Complex	MW03	L2005242	Greenbelt pumphouse	Utilities	Main	MW03-052	Utilities
Gary Complex	MW03	L2005244	Outfall 004	Utilities	Main	MW03-068	Utilities
Gary Complex	MW03	L2005245	Outfall 004D	Utilities	Main	MW03-069	Utilities
Gary Complex	MW03	L2005291	North entrance	AE-8	Main	MW03-194	AE-8
Gary Complex	MW03	L2005293	South entrance	AE-8	Main	MW03-193	AE-8
Gary Complex	MW03	L2005294	South entrance	AE-8	Main	MW03-195	AE-8
Gary Complex	MW03	L2005295	West CPU room	AE-8	Main	MW03-196	AE-8
Gary Complex	MW03	L2005296	West CPU room	AE-8	Main	MW03-197	AE-8
Gary Complex	MW03	L2005421	Outfall 002	Utilities	Main	MW03-073	Utilities
Gary Complex	MW03	L2005422	Outfall 002D	Utilities	Main	MW03-066	Utilities
Gary Complex	MW03	L2005423	Outfall 003D	Utilities	Main	MW03-067	Utilities
Gary Complex	MW03	L2005424	Outfall 003	Utilities	Main	MW03-072	Utilities
Gary Complex	MW03	L2005425	Natural gashouse	Utilities	Main	MW03-074	Utilities
Gary Complex	MW03	L2005426	Chemtreat MCC	Utilities	Main	MW03-045	Utilities
Gary Complex	MW03	L2005427	Chemtreat MCC	Utilities	Main	MW03-044	Utilities
Gary Complex	MW03	L2005428	Chemtreat s. control	Utilities	Main	MW03-048	Utilities
Gary Complex	MW03	L2005429	Chemtreat s. control	Utilities	Main	MW03-046	Utilities
Gary Complex	MW03	L2005430	Chemtreat s. control bldg. north	Utilities	Main	MW03-049	Utilities
Gary Complex	MW03	L2005432	Chemtreat west wall	Utilities	Main	MW03-042	Utilities
Gary Complex	MW03	L2005434	Chemtreat bsmt.	Utilities	Basement	MW03-039	Utilities
Gary Complex	MW03	L2005435	Outfall 104 south	Utilities	Main	MW03-070	Utilities
Gary Complex	MW03	L2005436	Outfall 104 north	Utilities	Main	MW03-071	Utilities
Gary Complex	MW03	L2005481	Column E09	53 Warehouse	Ground	MW03-076	53 Warehouse
Gary Complex	MW03	L2005672	UT 11 office south door	Utilities	Main	MW03-051	Utilities
Gary Complex	MW03	L2005673	UT 11 office hallway	Utilities	Main	MW03-050	Utilities

### USS Midwest Plant Fire Extinguishers

Plant	District	Location Code	Location Description	Department	Floor Reference	Target	Zone
Gary Complex	MW03	L2005724	Main sub east target	Utilities	Main	MW03-064	Utilities
Gary Complex	MW03	L2005725	Main sub south wall	Utilities	Main	MW03-062	Utilities
Gary Complex	MW03	L2005726	Main sub bldg.	Utilities	Main	MW03-063	Utilities
Gary Complex	MW03	L2005727	Main sub switchhouse	Utilities	Main	MW03-055	Utilities
Gary Complex	MW03	L2005728	Main sub switchhouse	Utilities	Main	MW03-061	Utilities
Gary Complex	MW03	L2005729	Main sub switchhouse	Utilities	Main	MW03-059	Utilities
Gary Complex	MW03	L2005730	Main sub switchhouse	Utilities	Main	MW03-060	Utilities
Gary Complex	MW03	L2005731	Main sub CA tunnel	Utilities	Main	MW03-056	Utilities
Gary Complex	MW03	L2005732	Main sub electrical	Utilities	Main	MW03-053	Utilities
Gary Complex	MW03	L2005733	Main sub electrical	Utilities	Main	MW03-057	Utilities
Gary Complex	MW03	L2005735	Main sub electrical	Utilities	Main	MW03-054	Utilities
Gary Complex	MW03	L2005748	Track bldg. lunch room	Transportation	Main	MW03-034	Transportation
Gary Complex	MW03	L2005749	Irrigation bldg.	Transportation	Main	MW03-037	Transportation
Gary Complex	MW03	L2005755	Main gate	Utilities	Main	MW03-024	Plant Prot
Gary Complex	MW03	L2005790	HNX north wall	Utilities	Main	MW03-111	Utilities
Gary Complex	MW03	L2005791	HNX center column	Utilities	Main	MW03-112	Utilities
Gary Complex	MW03	L2005792	HNX center column	Utilities	Main	MW03-110	Utilities
Gary Complex	MW03	L2005804	Bander / Test Booth	3 Galvanize	Main	MW03-154A	
Gary Complex	MW03	L2005815	Keltron room	Emergency Services	Main	MW03-023	Plant Prot
Gary Complex	MW03	L2005828	Northwest utility room	AE-1	Main	MW03-007	AE-1
Gary Complex	MW03	L2005829	Phone room	AE-1	Main	MW03-006	AE-1
Gary Complex	MW03	L2005830	Phone room	AE-1	Main	MW03-005	AE-1
Gary Complex	MW03	L2005886	Column LM33	Combo	Ground	MW03-171	Combo Line
Gary Complex	MW03	L2005887	Paint booth - s. end	3 Galvanize	Ground	MW03-154	3 Galvanize
Gary Complex	MW03	L2005888	Ext. island col N14	3 Galvanize	Ground	MW03-126	3 Galvanize
Gary Complex	MW03	L2005889	Ext. island col N14	3 Galvanize	Ground	MW03-125	3 Galvanize
Gary Complex	MW03	L2005890	Ext. island col N14	3 Galvanize	Ground	MW03-124	3 Galvanize
Gary Complex	MW03	L2005891	Ext. island col N14	3 Galvanize	Ground	MW03-123	3 Galvanize
Gary Complex	MW03	L2005916	Managers Locker Room	Misc	Main	MW03-064A	
Gary Complex	MW03	L2005917	Jantech Trailer	Misc	Main	MW03-064B	
Gary Complex	MW03	L2005918	Car barn	Transportation	Main	MW03-033	Transportation
Gary Complex	MW03	L2005930	Car barn	Transportation	Main	MW03-032	Transportation
Gary Complex	MW03	L2005932	Chemtreat east door	Utilities	Main	MW03-043	Utilities
Gary Complex	MW03	L2005940	Packaging office	53 Warehouse	Ground	MW03-078	53 Warehouse
Gary Complex	MW03	L2005941	Shippers office	53 Warehouse	Ground	MW03-081	53 Warehouse
Gary Complex	MW03	L2007628	Track bldg. stairs	Transportation	Main	MW03-036	Transportation
Gary Complex	MW03	L2007639	Combo / Galv Substation	Combo / 3 Galv	Main	MW03-175A	
Gary Complex	MW03	L2007657	Combo / Galv Substation	Combo / 3 Galv	Main	MW03-175B	
Gary Complex	MW03	L2008501	Track bldg. lunch room	Transportation	Main	MW03-035	Transportation

### USS Midwest Plant Fire Extinguishers

Plant	District	Location Code	Location Description	Department	Floor Reference	Target	Zone
Gary Complex	MW03	L2008511	Column M42	Combo	Ground	MW03-176	Combo Line
Gary Complex	MW03	L2008535	Column K-51	54 Warehouse	Ground	MW03-082	54 Warehouse
Gary Complex	MW03	L3500096	Northeast Hallway	AE1	Ground	MW03-009A	
Gary Complex	MW03	L3500481	Column M15	55 Warehouse	Ground	MW03-097	55 Warehouse
Gary Complex	MW03	L5000201	Outside North Furnace Room	Emergency Services	Main	MW03-205	
Gary Complex	MW03	L5000202	Lunch room	Emergency Services	Main	MW03-206	
Gary Complex	MW03	L5000203	North End of Hallway	Emergency Services	Main	MW03-207	
Gary Complex	MW03	L5000204	Outside South Furnace Room	Emergency Services	Main	MW03-208	
Gary Complex	MW03	L5000205	South End of Hallway	Emergency Services	Main	MW03-210	
Gary Complex	MW03	L5000278	Inside South Furnace Room	Emergency Services	Main	MW03-209	
Gary Complex	MW03	L5000282	Genos Trailer RSR	Galvaize	Main	MW03-220	
Gary Complex	MW03	L5000283	Genos Trailer RSR	Galvanize	Main	MW03-221	
Gary Complex	MW03	L5000293	Lunch Room East	Misc	Main	MW03-064C	
Gary Complex	MW03	L5000294	Lunch Room West	Misc	Main	MW03-064D	
Gary Complex	MW03	L5000427	Greenbelt Fuel Tank	Transportation	Ground	MW03-038A	
Gary Complex	MW03	L5000428	Column 023	3 Galvanize	Main	MW03-129A	
Gary Complex	MW03	L5000436	Mill Radio Building	Op Services	Main	MW03-031	
Gary Complex	MW04	L2003932	Safety Island # 16	Cleaning L	Ground	MW04-160	Cleaning L
Gary Complex	MW04	L2003933	Safety Island # 16	Cleaning L	Ground	MW04-161	Cleaning L
Gary Complex	MW04	L2003935	Bsmnt. S. End Column G72B	Cleaning L	Basement	MW04-152	Cleaning L
Gary Complex	MW04	L2003936	Bsmnt. S. End Column G75B	Cleaning L	Basement	MW04-153	Cleaning L
Gary Complex	MW04	L2003937	Bsmnt. Parts Storage Col. GH74B	Cleaning L	Basement	MW04-150	Cleaning L
Gary Complex	MW04	L2003938	Bsmnt. Parts Storage Col. GH75B	Cleaning L	Basement	MW04-151	Cleaning L
Gary Complex	MW04	L2003939	Bsmnt. S. End Column GH75B	Cleaning L	Basement	MW04-154	Cleaning L
Gary Complex	MW04	L2003940	Bsmnt. N. End Column GH79B	Cleaning L	Basement	MW04-148	Cleaning L
Gary Complex	MW04	L2003942	Column G78	Cleaning L	Ground	MW04-156	Cleaning L
Gary Complex	MW04	L2003943	Column G75	Cleaning L	Ground	MW04-155	Cleaning L
Gary Complex	MW04	L2003944	Column G82	Cleaning L	Ground	MW04-157	Cleaning L
Gary Complex	MW04	L2003945	Column GH82	Cleaning L	Ground	MW04-159	Cleaning L
Gary Complex	MW04	L2005062	Electronics Shop-rear office	TF and G M	Ground	MW04-005	TF and G M
Gary Complex	MW04	L2005063	Maintenance Electronics Shop	TF and G M	Ground	MW04-008	TF and G M
Gary Complex	MW04	L2005064	Electronics Lunch Room	TF and G M	Ground	MW04-003	TF and G M
Gary Complex	MW04	L2005065	Conference Room	TF and G M	1	MW04-002	TF and G M
Gary Complex	MW04	L2005066	Conference Room	TF and G M	1	MW04-001	TF and G M
Gary Complex	MW04	L2005067	Office Area	TF and G M	Ground	MW04-009	TF and G M
Gary Complex	MW04	L2005069	Col. E115B	TF&G Maintenance	Basement	MW04-015	MWP
Gary Complex	MW04	L2005070	Col. E107B	TF&G Maintenance	Basement	MW04-013	MWP
Gary Complex	MW04	L2005071	Col. E111B	TF&G Maintenance	Basement	MW04-014	MWP
Gary Complex	MW04	L2005072	Col. E121B	TF&G Maintenance	Basement	MW04-016	MWP

### USS Midwest Plant Fire Extinguishers

Plant	District	Location Code	Location Description	Department	Floor Reference	Target	Zone
Gary Complex	MW04	L2005085	Maintenance Area Column DE113	TF and G M	Ground	MW04-007	TF and G M
Gary Complex	MW04	L2005143	Scales and Refrigeration Office	Cntrl Main	Main	MW04-125	Cntrl Main
Gary Complex	MW04	L2005147	Crane Repair-Fab. Area Col H116	Cntrl Main	Main	MW04-118	Cntrl Main
Gary Complex	MW04	L2005153	Crane Repair-Sink Roll Booth Col G118	Cntrl Main	Main	MW04-120	Cntrl Main
Gary Complex	MW04	L2005154	Crane Repair-Sink Roll Booth Col G118	Cntrl Main	Main	MW04-121	Cntrl Main
Gary Complex	MW04	L2005156	Crane Repair-Burning Table Col. HG118	Cntrl Main	Main	MW04-119	Cntrl Main
Gary Complex	MW04	L2005158	Machine Shop 300 Ton press	Cntrl Main	Main	MW04-112	MWP
Gary Complex	MW04	L2005159	Machine Shop-60" Lathe	Cntrl Main	Main	MW04-116	Cntrl Main
Gary Complex	MW04	L2005160	Machine Shop-Tool Crib	Cntrl Main	Main	MW04-115	Cntrl Main
Gary Complex	MW04	L2005161	Machine Shop-Jib Crane at 17" Lathe	Cntrl Main	Main	MW04-117	Cntrl Main
Gary Complex	MW04	L2005166	Crane Repair-Lunch Room	Cntrl Main	Main	MW04-122	Cntrl Main
Gary Complex	MW04	L2005169	Predictive Maint-North Wall of Trailer	Cntrl Main	Main	MW04-127	Cntrl Main
Gary Complex	MW04	L2005170	Machine Shop-Hydraulic Crib	Cntrl Main	Main	MW04-114	Cntrl Main
Gary Complex	MW04	L2005171	Motor Repair Shop-Conduit Room	Cntrl Main	Main	MW04-133	Cntrl Main
Gary Complex	MW04	L2005186	ANCA Computer Room 1st Floor	Continuous Annealing Line	1	MW04-074	Continuous
Gary Complex	MW04	L2005207	Upstairs Hallway North End	Tin Mill O	Main	MW04-018	Tin Mill O
Gary Complex	MW04	L2005209	Downstairs Hallway North End	Tin Mill O	Basement	MW04-019	Tin Mill O
Gary Complex	MW04	L2005210	Basement Conference Room	Tin Mill O	Basement	MW04-022	Tin Mill O
Gary Complex	MW04	L2005211	Basement Conference Room	Tin Mill O	Basement	MW04-021	Tin Mill O
Gary Complex	MW04	L2005212	Downstairs Hallway South End	Tin Mill O	Basement	MW04-020	Tin Mill O
Gary Complex	MW04	L2005219	Tractor Shop Column H92	Tractor Shop	Main	MW04-139	Tractor Shop
Gary Complex	MW04	L2005220	Tractor Shop Column H88	Tractor Shop	Main	MW04-137	Tractor Shop
Gary Complex	MW04	L2005252	Safety Island # 11	52 5 Stand	Ground	MW04-192	52 5 Stand
Gary Complex	MW04	L2005253	Safety Island #11	52 5 Stand	Ground	MW04-193	52 5 Stand
Gary Complex	MW04	L2005255	Column K85	52 5 Stand	Ground	MW04-186	52 5 Stand
Gary Complex	MW04	L2005257	Column H85	52 5 Stand	Ground	MW04-179	52 5 Stand
Gary Complex	MW04	L2005258	Chart Room Column K83	52 5 Stand	Ground	MW04-178	52 5 Stand
Gary Complex	MW04	L2005260	Column J81	52 5 Stand	Ground	MW04-181	52 5 Stand
Gary Complex	MW04	L2005262	Column J79	52 5 Stand	Ground	MW04-180	52 5 Stand
Gary Complex	MW04	L2005263	Column K81	52 5 Stand	Ground	MW04-185	52 5 Stand
Gary Complex	MW04	L2005265	Column J83	52 5 Stand	Ground	MW04-182	52 5 Stand
Gary Complex	MW04	L2005270	B- 52" Elect. Bsmt. - Column K77B	52 5 Stand	Basement	MW04-166	52 5 Stand
Gary Complex	MW04	L2005271	B- 52" Elect. Bsmt. - Column K76B	52 5 Stand	Basement	MW04-164	52 5 Stand
Gary Complex	MW04	L2005272	B- 52" Elect. Bsmt. - Column KJ76B	52 5 Stand	Basement	MW04-169	52 5 Stand
Gary Complex	MW04	L2005273	B- 52" Elect. Bsmt. - Column K76B	52 5 Stand	Basement	MW04-165	52 5 Stand
Gary Complex	MW04	L2005274	B- 52" Elect. Bsmt. - Column KJ76B	52 5 Stand	Basement	MW04-168	52 5 Stand
Gary Complex	MW04	L2005275	B- 52" Elect. Bsmt. - Column J79B	52 5 Stand	Basement	MW04-163	52 5 Stand
Gary Complex	MW04	L2005276	B- 52" Elect. Bsmt. - Column H78B	52 5 Stand	Basement	MW04-162	52 5 Stand
Gary Complex	MW04	L2005277	B- Column K85B	52 5 Stand	Basement	MW04-174	52 5 Stand

### USS Midwest Plant Fire Extinguishers

Plant	District	Location Code	Location Description	Department	Floor Reference	Target	Zone
Gary Complex	MW04	L2005278	B- Column KL83B	52 5 Stand	Basement	MW04-176	52 5 Stand
Gary Complex	MW04	L2005279	B- Del. End Bsmt.	52 5 Stand	Basement	MW04-177	52 5 Stand
Gary Complex	MW04	L2005280	B- Column J79B	52 5 Stand	Basement	MW04-171	52 5 Stand
Gary Complex	MW04	L2005282	B- Column K79B	52 5 Stand	Basement	MW04-173	52 5 Stand
Gary Complex	MW04	L2005283	B- Column KL81B	52 5 Stand	Basement	MW04-175	52 5 Stand
Gary Complex	MW04	L2005284	B- Column K78B	52 5 Stand	Basement	MW04-172	52 5 Stand
Gary Complex	MW04	L2005327	Computer Room-Above	80 5 Stand	1	MW04-179	80 5 Stand
Gary Complex	MW04	L2005437	Lake Pumphouse-North Door	Utilities	Main	MW04-198	Utilities
Gary Complex	MW04	L2005438	Lake Pumphouse - South Door	Utilities	Main	MW04-196	Utilities
Gary Complex	MW04	L2005439	Lake Pumphouse	Utilities	Basement	MW04-201	Utilities
Gary Complex	MW04	L2005440	Lake Pumphouse	Utilities	Basement	MW04-194	Utilities
Gary Complex	MW04	L2005441	Lake Pumphouse Annex	Utilities	Main	MW04-199	Utilities
Gary Complex	MW04	L2005442	Lake Pumphouse Annex	Utilities	Main	MW04-195	Utilities
Gary Complex	MW04	L2005443	Outfall 000C	Utilities	Main	MW04-197	Utilities
Gary Complex	MW04	L2005444	Lake Pumphouse-Northwest	Utilities	Main	MW04-202	Utilities
Gary Complex	MW04	L2005445	Dewatering plant - Compressor Room	Utilities	Main	MW04-226	Utilities
Gary Complex	MW04	L2005446	Dewatering plant - Locker Room	Utilities	Main	MW04-228	Utilities
Gary Complex	MW04	L2005447	Dewatering-Office Wall	Utilities	Main	MW04-232	Utilities
Gary Complex	MW04	L2005448	Dewatering plant - Pressroom	Utilities	Main	MW04-230	Utilities
Gary Complex	MW04	L2005449	Dewatering plant - Pressroom	Utilities	Main	MW04-229	Utilities
Gary Complex	MW04	L2005450	Dewatering Plant - Pressroom	Utilities	Main	MW04-223	Utilities
Gary Complex	MW04	L2005452	Dewatering plant - Basement	Utilities	Basement	MW04-227	Utilities
Gary Complex	MW04	L2005454	TPPM Trailer #1 - North Wall	TPPM	Main	MW04-140	TPPM
Gary Complex	MW04	L2005455	TPPM Trailer #1 - North Wall	TPPM	Main	MW04-141	TPPM
Gary Complex	MW04	L2005456	TPPM Trailer #2 - North Wall	TPPM	Main	MW04-143	TPPM
Gary Complex	MW04	L2005457	TPPM Trailer #2 - North Wall	TPPM	Main	MW04-142	TPPM
Gary Complex	MW04	L2005458	TPPM Trailer #3 - South Wall	TPPM	Main	MW04-146	TPPM
Gary Complex	MW04	L2005459	TPPM Trailer #3 - South Wall	TPPM	Main	MW04-144	TPPM
Gary Complex	MW04	L2005460	TPPM Trailer #3 - North Wall	TPPM	Main	MW04-145	TPPM
Gary Complex	MW04	L2005461	TPPM Trailer #3 - North Wall	TPPM	Main	MW04-147	TPPM
Gary Complex	MW04	L2005462	West Wall Column E125	2 TRC	Main	MW04-069	2 TRC
Gary Complex	MW04	L2005463	West Wall Column E127	2 TRC	Main	MW04-064	2 TRC
Gary Complex	MW04	L2005464	Basement Column EF127B	2 TRC	Basement	MW04-072	2 TRC
Gary Complex	MW04	L2005465	Basement Column EF127B	2 TRC	Basement	MW04-070	2 TRC
Gary Complex	MW04	L2005466	Basement Column E129B	2 TRC	Basement	MW04-073	2 TRC
Gary Complex	MW04	L2005467	Basement Column EF128B	2 TRC	Basement	MW04-071	2 TRC
Gary Complex	MW04	L2005468	West Wall Column E129	2 TRC	Main	MW04-066	2 TRC
Gary Complex	MW04	L2005469	West Wall Column E131	2 TRC	Main	MW04-065	2 TRC
Gary Complex	MW04	L2005470	West Wall Column E135	2 TRC	Main	MW04-067	2 TRC

### USS Midwest Plant Fire Extinguishers

Plant	District	Location Code	Location Description	Department	Floor Reference	Target	Zone
Gary Complex	MW04	L2005471	West Wall Column E137	2 TRC	Main	MW04-068	2 TRC
Gary Complex	MW04	L2005472	Safety Island # 5	2 TRC	Main	MW04-062	2 TRC
Gary Complex	MW04	L2005473	Safety Island #5	2 TRC	Main	MW04-063	2 TRC
Gary Complex	MW04	L2005474	East Wall Column F125	1 TRC	Main	MW04-057	1 TRC
Gary Complex	MW04	L2005475	East Wall Column F125	1 TRC	Main	MW04-056	1 TRC
Gary Complex	MW04	L2005477	Hydraulic Basement Column F123B	1 TRC	Basement	MW04-058	1 TRC
Gary Complex	MW04	L2005478	Hydraulic Basement Column EF124B	1 TRC	Basement	MW04-059	1 TRC
Gary Complex	MW04	L2005479	Electrical Basement Column F125B	1 TRC	Basement	MW04-061	1 TRC
Gary Complex	MW04	L2005480	East Wall Column F121	1 TRC	Main	MW04-055	1 TRC
Gary Complex	MW04	L2005510	South End - Main Hallway	AE-3	Main	MW04-109	AE-3
Gary Complex	MW04	L2005511	Labor Relations Area	AE-3	Main	MW04-110	AE-3
Gary Complex	MW04	L2005513	South End - Conference Room	AE-3	Main	MW04-107	AE-3
Gary Complex	MW04	L2005514	CM Conference Room	AE-3	Main	MW04-108	AE-3
Gary Complex	MW04	L2005515	C.M. Copy Room	AE-3	Main	MW04-111	AE-3
Gary Complex	MW04	L2005516	CM Offices-North Entrance	AE-3	Main	MW04-106	AE-3
Gary Complex	MW04	L2005517	Fab Shop North Wall	TMP Maintenance	Main	MW04-023	TMP Maintenance
Gary Complex	MW04	L2005518	Fab Shop East Wall	TMP Maintenance	Main	MW04-024	TMP Maintenance
Gary Complex	MW04	L2005519	Fab Shop - South Wall	TMP Maintenance	Main	MW04-025	TMP Maintenance
Gary Complex	MW04	L2005539	East Wall Column G137	2 TTM	Main	MW04-040	2 TTM
Gary Complex	MW04	L2005540	North Wall Col E 80	2 TTM	Main	MW04-043	2 TTM
Gary Complex	MW04	L2005541	North Wall Column F139	2 TTM	Main	MW04-038	2 TTM
Gary Complex	MW04	L2005542	West Wall Column F137	2 TTM	Main	MW04-039	2 TTM
Gary Complex	MW04	L2005543	Electrical Basement Col. G136B	2 TTM	Basement	MW04-054	2 TTM
Gary Complex	MW04	L2005544	Electrical Basement Col. FG137B	2 TTM	Basement	MW04-053	2 TTM
Gary Complex	MW04	L2005545	Electrical Basement Col. F136B	2 TTM	Basement	MW04-052	2 TTM
Gary Complex	MW04	L2005546	Basement West Wall Col. F133B	2 TTM	Basement	MW04-048	2 TTM
Gary Complex	MW04	L2005547	Basement North Wall Col. FG133B	2 TTM	Basement	MW04-049	2 TTM
Gary Complex	MW04	L2005548	Bsmnt Mid Hydraulic Col. FG132B	2 TTM	Basement	MW04-050	2 TTM
Gary Complex	MW04	L2005549	Basement East Wall Col. G133B	2 TTM	Basement	MW04-051	2 TTM
Gary Complex	MW04	L2005550	East Wall Column G135	2 TTM	Main	MW04-041	2 TTM
Gary Complex	MW04	L2005551	West Wall Column F133	2 TTM	Main	MW04-042	2 TTM
Gary Complex	MW04	L2005552	Safety Island #19 Column G131	2 TTM	Main	MW04-045	2 TTM
Gary Complex	MW04	L2005553	Safety Island # 19 Column G131	2 TTM	Main	MW04-046	2 TTM
Gary Complex	MW04	L2005554	Southeast Corner Column G131	2 TTM	Main	MW04-044	2 TTM
Gary Complex	MW04	L2005555	East Side Column G131	1 TTM	Main	MW04-031	1 TTM
Gary Complex	MW04	L2005556	West Side Column F131	1 TTM	Main	MW04-030	1 TTM
Gary Complex	MW04	L2005557	#1 TTM Computer Room	1 TTM	Main	MW04-032	1 TTM
Gary Complex	MW04	L2005558	West Wall Column F129	1 TTM	Main	MW04-028	1 TTM
Gary Complex	MW04	L2005559	East Wall Column G129	1 TTM	Main	MW04-029	1 TTM



### USS Midwest Plant Fire Extinguishers

Plant	District	Location Code	Location Description	Department	Floor Reference	Target	Zone
Gary Complex	MW04	L2005560	Electrical Bsmnt Column G129B	1 TTM	Basement	MW04-034	1 TTM
Gary Complex	MW04	L2005561	Electrical Bsmnt Column F129B	1 TTM	Basement	MW04-033	1 TTM
Gary Complex	MW04	L2005562	West Wall Column F127	1 TTM	Main	MW04-027	1 TTM
Gary Complex	MW04	L2005563	Hydraulic Bsmnt West Side Col. F12	1 TTM	Basement	MW04-037	1 TTM
Gary Complex	MW04	L2005564	Hydraulic Bsmnt Middle Col. GF127B	1 TTM	Basement	MW04-036	1 TTM
Gary Complex	MW04	L2005565	Hydraulic Bsmnt East Side Col. G12	1 TTM	Basement	MW04-035	1 TTM
Gary Complex	MW04	L2005566	East Wall Column G127	1 TTM	Main	MW04-026	1 TTM
Gary Complex	MW04	L2005631	Column GH111	Continuous Annealing Line	Ground	MW04-095	Continuous
Gary Complex	MW04	L2005632	Column GH115	Continuous Annealing Line	Ground	MW04-096	Continuous
Gary Complex	MW04	L2005633	Column G121	Continuous Annealing Line	Ground	MW04-094	Continuous
Gary Complex	MW04	L2005634	Column G119	Continuous Annealing Line	Ground	MW04-093	Continuous
Gary Complex	MW04	L2005636	Deck 4 Elevator Column G113D4	Continuous Annealing Line	4	MW04-100	Continuous
Gary Complex	MW04	L2005637	Deck 5 Elevator Column G113D5	Continuous Annealing Line	5	MW04-101	Continuous
Gary Complex	MW04	L2005638	Deck 6 Elevator Column G113D6	Continuous Annealing Line	6	MW04-102	Continuous
Gary Complex	MW04	L2005639	Deck 3 Elevator Column G113D3	Continuous Annealing Line	3	MW04-099	Continuous
Gary Complex	MW04	L2005640	Deck 2 Elevator Column G113D2	Continuous Annealing Line	2	MW04-098	Continuous
Gary Complex	MW04	L2005641	Deck 1 Elevator Column G113D1	Continuous Annealing Line	1	MW04-097	Continuous
Gary Complex	MW04	L2005642	Operator's Station - North Wall	Continuous Annealing Line	Ground	MW04-103	Continuous
Gary Complex	MW04	L2005643	Column G107	Continuous Annealing Line	Ground	MW04-092	Continuous
Gary Complex	MW04	L2005644	Column G102	Continuous Annealing Line	Ground	MW04-091	Continuous
Gary Complex	MW04	L2005645	Column G099	Continuous Annealing Line	Ground	MW04-090	Continuous
Gary Complex	MW04	L2005646	Column G096	Continuous Annealing Line	Ground	MW04-089	Continuous
Gary Complex	MW04	L2005647	CA Office-Column HG102	Continuous Annealing Line	Ground	MW04-087	Continuous
Gary Complex	MW04	L2005649	Basement South Loop Tower	Continuous Annealing Line	Basement	MW04-086	Continuous
Gary Complex	MW04	L2005650	B- Hydraulic Bsmnt. Column G101B	Continuous Annealing Line	Basement	MW04-083	Continuous
Gary Complex	MW04	L2005651	B- Hydraulic Bsmnt. Column G99B	Continuous Annealing Line	Basement	MW04-082	Continuous
Gary Complex	MW04	L2005652	B- Elect. Bsmnt. Column G103B	Continuous Annealing Line	Basement	MW04-075	Continuous
Gary Complex	MW04	L2005654	B- Elect. Bsmnt. Column G107B	Continuous Annealing Line	Basement	MW04-077	Continuous
Gary Complex	MW04	L2005656	B- Elect. Bsmnt. Column GH114B	Continuous Annealing Line	Basement	MW04-081	Continuous
Gary Complex	MW04	L2005658	B- Elect. Bsmnt. Column G117B	Continuous Annealing Line	Basement	MW04-080	Continuous
Gary Complex	MW04	L2005659	B- Hydraulic Bsmnt. Column GH119B	Continuous Annealing Line	Basement	MW04-085	Continuous
Gary Complex	MW04	L2005660	B- Hydraulic Bsmnt. Column G119B	Continuous Annealing Line	Basement	MW04-084	Continuous
Gary Complex	MW04	L2005661	Safety Island # 9 Column H110	Continuous Annealing Line	Ground	MW04-105	Continuous
Gary Complex	MW04	L2005662	Safety Island # 9 Column H110	Continuous Annealing Line	Ground	MW04-104	Continuous
Gary Complex	MW04	L2005663	CA Sub Station	Continuous Annealing Line	Ground	MW04-088	Continuous
Gary Complex	MW04	L2005674	Flyash Building-South Door	Utilities	Main	MW04-222	Utilities
Gary Complex	MW04	L2005675	Flyash Building Compressors	Utilities	Main	MW04-221	Utilities
Gary Complex	MW04	L2005678	Boilerhouse-Chemical Room	Utilities	Main	MW04-216	Utilities
Gary Complex	MW04	L2005680	Boilerhouse-Substation-South	Utilities	Main	MW04-217	Utilities

### USS Midwest Plant Fire Extinguishers

Plant	District	Location Code	Location Description	Department	Floor Reference	Target	Zone
Gary Complex	MW04	L2005681	Boilerhouse-Substation-South	Utilities	Main	MW04-215	Utilities
Gary Complex	MW04	L2005682	Boilerhouse - Substation - North	Utilities	Main	MW04-205	Utilities
Gary Complex	MW04	L2005683	Boilerhouse-North Wall	Utilities	Main	MW04-231	Utilities
Gary Complex	MW04	L2005687	Boilerhouse-West Stairs	Utilities	Main	MW04-208	Utilities
Gary Complex	MW04	L2005688	Boilerhouse-Maintenance Shop	Utilities	Main	MW04-214	Utilities
Gary Complex	MW04	L2005689	Boilerhouse Parts Storage	Utilities	Main	MW04-206	Utilities
Gary Complex	MW04	L2005690	Boilerhouse - East Wall	Utilities	3	MW04-213	Utilities
Gary Complex	MW04	L2005691	Safety Island # 8 Boilerhouse	Utilities	1	MW04-220	Utilities
Gary Complex	MW04	L2005692	Safety Island # 8 Boilerhouse	Utilities	3	MW04-210	Utilities
Gary Complex	MW04	L2005693	Boilerhouse Lunch Room	Utilities	Main	MW04-209	Utilities
Gary Complex	MW04	L2005694	Boilerhouse Planning Office	Utilities	3	MW04-219	Utilities
Gary Complex	MW04	L2005695	Boilerhouse Locker Room	Utilities	Main	MW04-218	Utilities
Gary Complex	MW04	L2005696	Boilerhouse-Landing	Utilities	2	MW04-211	Utilities
Gary Complex	MW04	L2005697	Boilerhouse Power Inspector's Area	Utilities	2	MW04-212	Utilities
Gary Complex	MW04	L2005698	Power Inspector's Shop-South Wall	Utilities	2	MW04-207	Utilities
Gary Complex	MW04	L2005734	Main sub electrical	Utilities	Basement	MW04-162A	Utilities
Gary Complex	MW04	L2005754	Boiler house Fuel tank	Utilities	Main	MW03-041	Utilities
Gary Complex	MW04	L2005785	Sewage Lift-West Wall	Utilities	Main	MW04-204	Utilities
Gary Complex	MW04	L2005786	Lake Pumphouse	Utilities	Basement	MW04-200	Utilities
Gary Complex	MW04	L2005835	Leanto - North Side	Cntrl Main	Main	MW04-128	Cntrl Main
Gary Complex	MW04	L2005836	Leanto - South Side	Cntrl Main	Main	MW04-129	Cntrl Main
Gary Complex	MW04	L2005837	Crane Repair Brake	Cntrl Main	Main	MW04-113	MWP
Gary Complex	MW04	L2005840	On Fence Next to Spares Room.	Cntrl Main	Main	MW04-130	Cntrl Main
Gary Complex	MW04	L2005842	Motor Repair Shop-Col. H120	Cntrl Main	Main	MW04-123	Cntrl Main
Gary Complex	MW04	L2005910	Sewage Lift - Sub Level A	Utilities	Basement	MW04-203	Utilities
Gary Complex	MW04	L2005923	Column GH75	Cleaning L	Ground	MW04-158	Cleaning L
Gary Complex	MW04	L2005924	Bsmnt. N. End Column GH81B	Cleaning L	Basement	MW04-149	Cleaning L
Gary Complex	MW04	L2005934	Predictive Maint-South Wall of Trailer	Cntrl Main	Main	MW04-126	Cntrl Main
Gary Complex	MW04	L2005935	Machine Shop Lunch Rm.	Cntrl Main	Main	MW04-132	Cntrl Main
Gary Complex	MW04	L2005947	Lockout/Tagout Office	TF and G M	1	MW04-006	TF and G M
Gary Complex	MW04	L2005980	B- Elect. Bsmnt. Column G115B	Continuous Annealing Line	Basement	MW04-079	Continuous
Gary Complex	MW04	L2005981	B- Elect. Bsmnt. Column G113B	Continuous Annealing Line	Basement	MW04-078	Continuous
Gary Complex	MW04	L2005982	B- Elect. Bsmnt. Column G105B	Continuous Annealing Line	Basement	MW04-076	Continuous
Gary Complex	MW04	L2005987	B- 52" Elect. Bsmt. - Column K78B	52 5 Stand	Basement	MW04-167	52 5 Stand
Gary Complex	MW04	L2005988	B- 52" Elect. Bsmt. - Column KJ79B	52 5 Stand	Basement	MW04-170	52 5 Stand
Gary Complex	MW04	L2007623	Hallway Next to Lunch Room.	Cntrl Main	Main	MW04-131	Cntrl Main
Gary Complex	MW04	L2007624	Hydraulic Basement Column F125B	1 TRC	Basement	MW04-060	1 TRC
Gary Complex	MW04	L2007627	Dewatering Plant - Pressroom	Utilities	Main	MW04-224	Utilities
Gary Complex	MW04	L2007637	B-Column J79B	52 5 Stand	Basement	MW04-171	52 5 Stand

### USS Midwest Plant Fire Extinguishers

Plant	District	Location Code	Location Description	Department	Floor Reference	Target	Zone
Gary Complex	MW04	L2008506	Roll Rack Column E117	TF and G M	Ground	MW04-012	TF and G M
Gary Complex	MW04	L2008510	Control Pulpit	52 5 Stand	1	MW04-187	52 5 Stand
Gary Complex	MW04	L2008512	Roll Rack	TF and G M	Ground	MW04-010	TF and G M
Gary Complex	MW04	L2008514	Roll Rack	TF and G M	Ground	MW04-011	TF and G M
Gary Complex	MW04	L2008522	Upstairs Hallway South End	Tin Mill O	Main	MW04-017	Tin Mill O
Gary Complex	MW04	L2008528	Electronics Shop-South Wall of Shop	Cntrl Main	Main	MW04-124	Cntrl Main
Gary Complex	MW04	L2008529	Tractor Shop Column HG89	Tractor Shop	Main	MW04-136	Tractor Shop
Gary Complex	MW04	L3500403	Column K79	52 5 Stand	Ground	MW04-183	52 5 Stand
Gary Complex	MW04	L3500404	Column K79	52 5 Stand	Ground	MW04-184	52 5 Stand
Gary Complex	MW04	L3500405	Mill Top - East	52 5 Stand	1	MW04-188	52 5 Stand
Gary Complex	MW04	L3500475	TTM Foreman's Office	2 TTM	2	MW04-047	2 TTM
Gary Complex	MW04	L3500502	Tractor Shop Column HG91	Tractor Shop	Main	MW04-138	Tractor Shop
Gary Complex	MW04	L3500519	Mill Top - West Side	52 5 Stand	1	MW04-189	52 5 Stand
Gary Complex	MW04	L3500926	North Wall Ext. Island	52 5 Stand	Ground	MW04-191	52 5 Stand
Gary Complex	MW04	L3500927	North Wall Ext. Island	52 5 Stand	Ground	MW04-190	52 5 Stand
Gary Complex	MW04	L3500930	Dewatering plant - Garage Bay	Utilities	Main	MW04-225	Utilities
Gary Complex	MW04	L5000000	North Wall/Safety Island	52" 5 Stand	Ground	MW04-192A	MWP
Gary Complex	MW04	L5000001	North Wall/Safety Island	52" 5 Stand	Ground	MW04-192B	MWP
Gary Complex	MW04	L5000011	Front of Pulpit	52" 5 Stand	Ground	MW04-187A	MWP
Gary Complex	MW04	L5000012	Front of Pulpit	52" 5 Stand	Ground	MW04-187B	MWP
Gary Complex	MW04	L5000013	Front of Pulpit	52" 5 Stand	Ground	MW04-187C	MWP
Gary Complex	MW04	L5000014	Front of Pulpit	52" 5 Stand	Ground	MW04-187D	MWP
Gary Complex	MW04	L5000015	Front of Pulpit	52" 5 Stand	Ground	MW04-187E	MWP
Gary Complex	MW04	L5000016	Front of Pulpit	52" 5 stand	Ground	MW04-187F	MWP
Gary Complex	MW04	L5000017	Front of Pulpit	52" 5 Stand	Ground	MW04-187G	MWP
Gary Complex	MW04	L5000076	Col J 79 SW of Mill	52" 5 Stand	Ground	MW04-180A	MWP
Gary Complex	MW04	L5000077	Col J 81 SW of Mill	52" 5 Stand	Ground	MW04-181A	MWP
Gary Complex	MW04	L5000234	Coil Tunnel Basement East End	52 5 Stand	Basement	MW04-177A	MWP
Gary Complex	MW04	L5000235	North wall extinguisher island	52 5 Stand	Ground	MW04-191A	MWP
Gary Complex	MW04	L5000236	North wall extinguisher island	52 5 Stand	Ground	MW04-191B	MWP
Gary Complex	MW04	L5000237	52 Pump house s/w mandoor	52 5 Stand	Ground	MW04-191C	MWP
Gary Complex	MW04	L5000238	52 Pump house n/w mandoor	52 5 Stand	Ground	MW04-191D	MWP
Gary Complex	MW04	L5000239	Col.G110 C/A Line Elec Bsmnt	C/A Line	Basement	MW04-086A	MWP
Gary Complex	MW04	L5000240	C/A Line Elevator main floor	C/A Line	Ground	MW04-097A	MWP
Gary Complex	MW04	L5000241	S/W Corner of Mill at fume exhaust	52 5 Stand	Ground	MW04-179A	MWP

---

**APPENDIX 5**

**EMERGENCY RESPONSE CONTRACTOR  
AGREEMENT**



June 20, 2016

Joseph E. Hanning, P.E.  
Director, Environmental Control  
US Steel Gary Works

US Steel Emergency Response

Joseph:

This letter is in response to conversations with Mark Henry and Marrison Taylor of US Steel concerning Emergency Response. Heritage is under contract to US Steel and other customers in Northwest Indiana for response to spills, Hazardous and Non-Hazardous, to properties and/or to waterways. Heritage's estimated response time to such a spill at US Steel: East Chicago Tin, Gary Works or Midwest Plant would be less than three hours. Heritage would utilize all resources to respond to a spill including pulling people from other spills or jobs, bringing in people from other locations and subcontracting Heritage approved vendors to assist. And emergency calls will be dealt with and the situation will be managed by the Heritage project manager on call. Should labor be pulled from other US Steel jobs or spills, it will be done with the discretion of US Steel Environmental and Heritage by the degree of the emergency and the nature of the work already being performed.

Heritage has an emergency response manager on call at all times. In case of an emergency, please call the 1-800-48-SPILL (ER Number). The ER number is a 24-hour spill response number that tracks and logs the calls and then makes certain that a call is paced to the on-call project manager.

It is understood that Heritage is the primary responder for Environmental (hazardous) emergencies at US Steel site in NW Indiana. Since the beginning of the year and as a result of meetings with US Steel's Environmental group leaders, Heritage has been communicating our capabilities and protocol for response as well as adding to our resources. We have written several letters, including specific protocol for logging a call which has been passed down to line managers and operations people responsible for initiating a response to an emergency. Lastly, we have improved our backup system by developing a more comprehensive call list that includes subcontractors for pumps, roll-off boxes, transporters, industrial maintenance labor, etc.

Heritage Environmental Services will make a concerted effort to keep the needs of US Steel met in NW Indiana when it comes to Emergency Response. We are well versed in hazardous response and have the necessary training, equipment and expertise to accommodate US Steel. I hope this letter satisfies both US Steel Purchasing and Environmental at the US Steel Midwest Plant. If you have any questions, or a desire to have a copy of the Planned Emergency Response Contract between Heritage and US Steel, please do not hesitate to ask.

Sincerely,

A handwritten signature in black ink, appearing to read "Steve El-Khatib", written over a light blue horizontal line.

Steve El-Khatib  
Chicago Area Manager  
Heritage Environmental Services

---

**APPENDIX 6**

**PORTER COUNTY MUTUAL AID AGREEMENT**

AGREEMENT FOR MUTUAL AID BETWEEN  
MUNICIPALITIES, TOWNSHIPS, FIRE PROTECTION  
DISTRICTS AND THE UNITS OF GOVERNMENT IN  
PORTER COUNTY, INDIANA

THIS AGREEMENT Made this 1st day of January, 1989, by and between the municipalities, townships, fire protection districts, federal agencies, associations, corporations, not for profit corporations and certain departments of the United States Government (all herein after referred to as "Units") as more particularly set forth and identified on the signature addendum attached hereto

WHEREAS, the units of government are authorized pursuant to the Interlocal Cooperation Act, the same being I.C. 1971, 36-1-7-1 to jointly exercise powers that may be exercised by any one political subdivision or governmental entity; and

WHEREAS, the various units of government and entities identified on the signature addendum attached hereto are desirous of establishing an agreement for mutual aid between the various fire departments owned, operated, or contracted with by such entities; and

WHEREAS, pursuant to the provisions of I.C. 1971, 36-1-7-3 a joint agreement for mutual aid must contain certain information.

IT IS NOW THEREFORE AGREED by and between the various units of government and/or entities who, by appropriate resolution or agreement, execute the signature addendum attached hereto as follows:

1. PURPOSE:

The purpose of this Agreement is to provide mutual aid to each

of the respective units and to supplement fire equipment and manpower now available at such time as it may be necessary to extinguish a large fire or to provide assistance for other emergency connected with fire service.

2. WHEN EFFECTIVE:

This Agreement shall be effective following its approval by the respective Boards of Town Trustees or City Councils of the Municipalities, Advisory Boards of the Townships and Commissioners of Fire Protection Districts, and boards of directors of not for profit corporations, and the execution of the Agreement by designated, authorized officials and countersigned by the respective Fire Chiefs of the departments concerned.

3. EFFECTIVE DATE:

Upon the acceptance and execution of this agreement by any entity or unit of government the same shall become in full force and effect as between all signatories to this agreement.

4. RULES AND REGULATIONS:

The Fire Chiefs of the respective departments shall establish rules and regulations for the method of giving and receiving requests for service and equipment under this Agreement. These rules and regulations shall be in writing and a copy shall be furnished to the Fire Chief of each department. Such rules and regulations, and any revisions, changes or amendments thereto, shall be in force and effect on and after their approval by the Porter County Fire Association.

5. COMPENSATION:

The mutual aid to be furnished under this Agreement shall be

without charge to the unit or department requesting the same, excepting that the Fire Department responding shall have a claim against the receiving unit for materials and supplies such as small tools, fire hose, foam concentrate, and the like which are used up, lost, disappear, destroyed or otherwise consumed while providing the mutual aid. A list of such materials shall be furnished to the Fire Chief of the department requesting mutual aid within thirty (30) days after the occurrence and loss.

6. AUTHORIZATION:

The Fire Chief of each department, or his delegate or substitute, shall render mutual aid, including, but not limited to, rescue squad service, ambulance service and standby service to the requesting department to the extent of available personnel and equipment not then required for the adequate protection of his own jurisdiction. The judgment of the Fire Chief, or the officer commanding in his absence, as to the available amount of personnel and equipment to be released for mutual aid shall be final and conclusive.

7. LIABILITY:

Each Municipality shall assume the liability imposed by the provisions of I.C. 1971, 36-1-7-7 as follows:

- A. Responding firefighters and their officers shall have the same powers and duties as corresponding personnel of the entities to which they respond but only for the period in which they are engaged in activities authorized or requested by the unit they are responding to.
- B. An entity or unit providing responding personnel remains responsible for the conduct of its personnel, for their medical expenses, and for workmens compensation as may be required by law.

Each unit retains liability for any loss or damage to its own equipment, pumpers, cabs, trucks or other equipment of a like kind, and shall cause the same to be insured in adequate amounts.

8. ADMINISTRATION

Pursuant to the provisions of I.C. 1971, 36-1-7-3 this agreement shall be administered through the chief officers of the Porter County Fire Association who are signatories to this agreement provided however, that any amendment or modification of the rules and regulations set forth in Exhibit "A" attached hereto and made a part hereof shall, prior to their effective date, be endorsed by the appropriate legislative body of all units which are a party to this agreement. It is not contemplated that the administration of this agreement will require financing, staffing, or a budget, and further will not acquire, hold, or dispose of real or personal property used in the joint undertaking except for such real or personal property owned and/or controlled by the respective unit or entity, which shall remain the sole and distinct property of such unit.

9. TERMINATION:

This Agreement shall remain in full force and effect until any one of the units herein has given thirty (30) days written notice to the other units that it will withdraw from such Agreement.

10. RECORDATION:

Pursuant to the provisions of I.C. 1971, 36-1-7-6 this agreement shall be recorded with the Office of the County Recorder of Porter County and shall be filed with the Indiana State Board



of Accounts within sixty (60) days of recordation.

This document is prepared and executed in multiple copies,  
any one of or all of which shall be constituted an original.

DATED THIS 1st day of January, 1989.

EXHIBIT "A"

RULES AND REGULATIONS

1. Responsibility and sole authority for requesting mutual aid rests with the chief officer of the department or his delegate or, in their absence, the highest ranking officer at the scene or his delegate, hereafter to be known as the commanding officer.
2. The requesting department shall specify the amount and type of equipment and the number of personnel needed.
3. Only under cases of extreme emergency shall the requesting department call for such a quantity of men and/or equipment so as to leave a responding department in such a situation that it is not able to protect its own jurisdiction with the equipment and manpower remaining. In such a case, the resources of all nearby departments shall be utilized equally before further assistance is requested of any one department.
  - A. If such an extreme emergency situation does occur, the requesting officer will notify the responding department of the situation and they will, at their option, request stand-by protection for their own area from an uninvolved nearby department.
  - B. If such an extreme emergency situation has not been declared by the requesting department and it has requested more aid than the responding department is able to provide without leaving its area in jeopardy, the commanding officer of the responding department may, at his option, respond with only that amount of equipment that he feels he can safely spare. If he does make this decision, he must immediately notify the commanding officer of the requesting department of this fact and make known to him exactly what is being supplied. The requesting department will then turn to another nearby department or departments for the balance of the equipment needed.
4. When calling for mutual aid, the requesting department shall give concise and clear road directions to the fire scene. If requested by the responding department, a man will be posted at a convenient position on a main road with appropriate signalling equipment to lead the responding department to the scene.
5. When responding to a mutual aid call, the commanding officer of the responding department will radio the requesting officer stating all pertinent data relating to the responding equipment and manpower, number of men, name of officer in

charge, and estimated time of arrival. The requesting department shall notify the responding department who is in command, to whom and where to report, and what order the apparatus should come in to the scene. It shall be the responsibility of the responding officer to contact the requesting officer when the responding department is in route. To prevent confusion, all communication should be between the respective commanding officers or their delegates and should be held to a minimum.

6. Upon arrival at the scene, the responding officer shall put his equipment and manpower at the disposal of and under the command of the requesting department. The requesting department will at all times, if possible, keep the responding crews together, working under their own officers.
7. As soon as the responding department is in route to answer a call for mutual aid, it is under the command of the requesting department and will remain so until released by the commanding officer of the requesting department.
8. If the responding department receives a call in its own area, or for any other reason, it will not under any circumstances abandon the requesting department until so released by the commanding officer of the requesting department. The responding officer should notify the commanding officer of the requesting department of the situation and request release as soon as possible. The responding department should request mutual aid for its own fire from an uninvolved nearby department.
9. When a department receives an original call for an incident in another department's area, it will, as soon as the true jurisdiction has been established, call that department to the scene, appraise the commanding officer of the entire situation, relinquish command, and request release or further instructions.
10. When a department is involved in a situation that involves all of its equipment and/or manpower, or places it in such a position that it would not be able to respond immediately to a call, leaving its area unprotected, the commanding officer may, at his discretion, request mutual aid, standby protection, at a location of his choosing. The requesting department will supply one man, preferably an officer, to stand by with the responding department. This man will serve as a guide through the area and will take command of the responding equipment and manpower. The responding department will send four men if at all possible. In areas with hydrant protection, only one pumper need be sent. In all other areas, one pumper and one tanker will be required.
11. No department shall request mutual aid unless all of its resources are in use or otherwise unavailable to further aid

the situation.

12. In extreme situations, the total command of the fire may be turned over to the responding department if both departments agree, but in no case may the responding department assume command without the express approval and consent of the requesting officer. In either case, responsibility shall remain with the requesting department.

SIGNATORY ADDENDUM NUMBER 1

The foregoing Agreement for Mutual Aid between municipalities, townships, fire protection districts and the units of government in Porter County, Indiana was approved by motion on the 21st day of August, 1989 by the Town of Beverly Shores and approved by the Chief of the Beverly Shores Volunteer Fire Department on the 21st day of August, 1989 as evidenced by the record of proceedings on file in the Office of the Clerk/Treasurer of the Town of Beverly Shores and pursuant to such proceedings the President of the Town Council and the Town Clerk/Treasurer were authorized to execute and affix their signatures hereon.

TOWN OF BEVERLY SHORES

BY: Carol Ruzic  
Carol Ruzic, President of the  
Beverly Shores Town Council

ATTEST:

Anna R. Carlson  
Anna R. Carlson, Clerk/Treasurer

BEVERLY SHORES VOLUNTEER FIRE DEPARTMENT

Andrew Himan  
Andrew Himan, Chief

ma:Beverly Shores #2/fire.sgn

SIGNATORY ADDENDUM NUMBER 3

The foregoing Agreement for Mutual Aid between municipalities, townships, fire protection districts and the units of government in Porter County, Indiana was approved by [strike one] (ordinance, resolution, motion) on the 10<sup>th</sup> day of May, 1989 by the Town of Burns Harbor and approved by the Chief of the Burns Harbor Volunteer Fire Department on the 10<sup>th</sup> day of May, 1989 as evidenced by the record of proceedings on file in the Office of the Clerk/Treasurer of the Town of Burns Harbor and pursuant to such proceedings the President of the Board of Trustees and the Town Clerk/Treasurer were authorized to execute and affix their signatures hereon.

TOWN OF BURNS HARBOR

BY: Danny L. Bryan  
President, Board of Trustees

Danny L. Bryan

ATTEST:

Donna Wilson  
Clerk/Treasurer  
Donna Wilson

BURNS HARBOR VOLUNTEER FIRE DEPARTMENT

BY: Johnnie D. Jones  
CHIEF  
Johnnie D. Jones

SIGNATORY ADDENDUM NUMBER 6

The foregoing Agreement for Mutual Aid between municipalities, townships, fire protection districts, corporations, and the units of government in Porter County, Indiana was approved by joint resolution by the Town of Ogden Dunes, Porter County, Indiana by its Board of Trustees on the 5th day of June, 1989 and the Ogden Dunes Volunteer Fire Department, Inc. of Ogden Dunes, Porter County, Indiana by its Board of Directors on the 29th day of May, 1989 as evidenced by the record of proceedings on file and pursuant to such proceedings this required Signatory Agreement was authorized.

TOWN OF OGDEN DUNES

Frank Stinson  
Frank Stinson, President

Tom Hill  
Tom Hill, Trustee

Dorothy Hunkett  
Dorothy Hunkett, Trustee

Ben Mallonee  
Ben Mallonee, Trustee

Bill Cunningham  
Bill Cunningham, Trustee

(SEAL)

ATTEST:

Frances L. Thompson  
Frances Thompson, Clerk-Treasurer

JUNE 5, 1989

OGDEN DUNES VOLUNTEER FIRE DEPT.

D. L. Hines  
D. L. Hines, Chief

Eric D. Kurtz  
Eric D. Kurtz, Asst. Chief

Larry Bornstein  
Larry Bornstein, Captain

Stephen Whitehead  
Stephen Whitehead, Captain

Donald Hamilton  
Donald Hamilton, Director

Thomas W. Tittle  
Thomas W. Tittle, Director

SIGNATORY ADDENDUM NUMBER 12

The foregoing Agreement for Mutual Aid between municipalities, townships, fire protection districts and the units of government in Porter County, Indiana was approved by [strike one] (ordinance, resolution, motion) on the 22nd day of August, 1989 by the Advisory Board of Portage Township and approved by the Chief of the Portage Township Volunteer Fire Department on the 22nd day of August, 1989 as evidenced by the record of proceedings on file in the Office of the Township Trustee of the Portage Township and pursuant to such proceedings the Township Trustee of Portage Township was authorized to execute and affix his signature hereon.

PORTAGE TOWNSHIP

BY: Curtie L. Wilson Sr.  
Township Trustee  
Curtie L. Wilson Sr.

PORTAGE TOWNSHIP VOLUNTEER FIRE DEPARTMENT

BY: Laddie L. Lesnick  
Chief  
Laddie L. Lesnick

**FILED**

JUN 1 1989

Doyle  
AUDITOR PORTER COUNTY

SIGNATORY ADDENDUM NUMBER 18

The foregoing Agreement for Mutual Aid between municipalities, townships, fire protection districts and the units of government in Porter County, Indiana was approved by [strike one] (ordinance, resolution, motion) on the 6<sup>th</sup> day of June, 1989 by Bethlehem Steel Corporation and approved by the Chief of the Bethlehem Steel Fire Department on the 6<sup>th</sup> day of June, 1989 as evidenced by the record of proceedings on file in the Office of the Superintendent of Bethlehem Steel and pursuant to such proceedings the Superintendent of Bethlehem Steel was authorized to execute and affix his signature hereon.

BETHLEHEM STEEL CORPORATION

BY: C. D. Furman  
Superintendent  
C. D. Furman

BETHLEHEM STEEL FIRE DEPARTMENT

BY: R. M. Matava  
~~Chief~~  
Supervisor Fire Protection  
R. M. Matava

SIGNATORY ADDENDUM NUMBER 20

The foregoing Agreement for Mutual Aid between municipalities, townships, fire protection districts and the units of government in Porter County, Indiana was approved by [strike one] (ordinance, resolution, motion) on the 1 day of Aug., 1989 by the City of Portage and approved by the Chief of the Portage Fire Department on the 1 day of Aug., 1989 as evidenced by the record of proceedings on file in the Office of the City Clerk of the City of Portage and pursuant to such proceedings the Mayor of the City of Portage and the City Clerk were authorized to execute and affix their signatures hereon.

CITY OF PORTAGE

BY: Samie Maletta  
Mayor, City of Portage  
Samie Maletta

ATTEST:

Douglas W. Olson  
City Clerk  
Douglas W. Olson

PORTAGE FIRE DEPARTMENT

BY: Philip D. Malrow  
~~Chief~~ CHIEF  
Philip D. Malrow


SIGNATORY ADDENDUM NUMBER 22-1

The Agreement for Mutual Aid between United States Steel Corporation and municipalities, townships, fire protection districts and the units of government in Porter County, Indiana was executed on the 24<sup>th</sup> day of July, 2003 by the United States Steel Corporation and approved by the Department Manager of Security and Fire Services of United States Steel Corporation, Gary, ECTO, and Midwest. The Department Manager is authorized to execute and affix their signatures hereon.

Effective upon recordation in the Office of the Porter County Recorder this signatory addendum replaces any and all prior signatory addendum(s) executed by National Steel Corporation [01/01/1989 Mutual Aid Agreement recorded on 12/08/1989, document number 89-19514, in book 123, page 171].

UNITED STATES STEEL CORPORATION

RICHARD A. DOUGLAS  
Comm Number 463147  
Expires September 19, 2007  
County of Porter

  
Richard A. Douglas  
Department Manager  
Security & Fire Services