

From: [Burk, Edward](#)
To: [Hummel, Lindsey](#)
Cc: [Bavetz, Steve](#); [Pace, Hunter](#); [Kreke, Thomas](#); [Jones, Allen](#)
Subject: RE: :EXTERNAL: RE: Clean Earth Extruder Installation
Date: Tuesday, July 2, 2024 11:23:13 AM
Attachments: [image015.jpg](#)
[image016.jpg](#)
[image017.png](#)
[image018.png](#)
[image019.png](#)
[image020.png](#)
[image021.png](#)
[image022.png](#)
[image023.png](#)
[image024.png](#)
[image025.png](#)
[image026.png](#)
[image027.png](#)
[image028.png](#)
[image003.jpg](#)
[image004.jpg](#)
[13346 204-07-01 REV-E SALES LAYOUT.pdf](#)

**** This is an EXTERNAL email. Exercise caution. DO NOT open attachments or click links from unknown senders or unexpected email. ****

Good morning

Attached are the final drawings including all the dimensions. If there are any questions and you feel a call including our engineering group will help. Please let me know and I can schedule.

Thank you for all your time and direction. It is appreciated.

Edward Burk

Manager Permitting Compliance



M [+1.313.316.1623](tel:+13133161623) O [313.316.1623](tel:3133161623)

eburk@cleanearthinc.com

www.cleanearthinc.com

515 Lycaste St, Detroit, MI 48214



From: Burk, Edward

Sent: Monday, July 1, 2024 11:18 AM

To: Hummel, Lindsey <LHummel@idem.IN.gov>

Cc: Bavetz, Steve <sbavetz@cleanearthinc.com>; Pace, Hunter <HPace@idem.IN.gov>; Kreke, Thomas <TKreke@idem.IN.gov>; Jones, Allen <ajones2@cleanearthinc.com>; Murphy, Kenneth <kmurphy@cleanearthinc.com>; Cape, Brian <bcape@cleanearthinc.com>
Subject: RE: :EXTERNAL: RE: Clean Earth Extruder Installation

Good morning

Understood. We are working to deliver the final drawing to you as soon as possible. Talk soon

Edward Burk

Manager Permitting Compliance



M [+1.313.316.1623](tel:+13133161623) O [313.316.1623](tel:3133161623)

eburk@cleanearthinc.com

www.cleanearthinc.com

515 Lycaste St, Detroit, MI 48214



From: Hummel, Lindsey <LHummel@idem.IN.gov>

Sent: Monday, July 1, 2024 9:59 AM

To: Burk, Edward <eburk@cleanearthinc.com>

Cc: Bavetz, Steve <sbavetz@cleanearthinc.com>; Pace, Hunter <HPace@idem.IN.gov>; Kreke, Thomas <TKreke@idem.IN.gov>

Subject: :EXTERNAL: RE: Clean Earth Extruder Installation

CAUTION : This email originated from outside of the organization.

Do not click links or open attachments unless you recognize the sender and know the content is safe.

Good morning Ed,

As you're aware, Requirement D1 of the minor modification (VFC #[83640979](#)) requires IDEM approval before the installation of the extruder unit. Please note that beginning installation of the unit before approval would be considered a violation of the facility permit.

We will do our best, however, due to the short turnaround before July 16th, we may not be able to complete a full review of the information before the planned start date.

Thank you,



Indiana Department of Environmental Management
Lindsey Hummel (she/her)
Technical Environmental Specialist
Permits Branch | Office of Land Quality
• (317) 232-7833 • LHummel@idem.IN.gov
Protecting Hoosiers and Our Environment
 | | | | | www.idem.IN.gov



From: Hummel, Lindsey
Sent: Friday, June 28, 2024 4:19 PM
To: Burk, Edward <eburk@cleanearthinc.com>
Cc: Bavetz, Steve <sbavetz@cleanearthinc.com>
Subject: RE: Clean Earth Extruder Installation

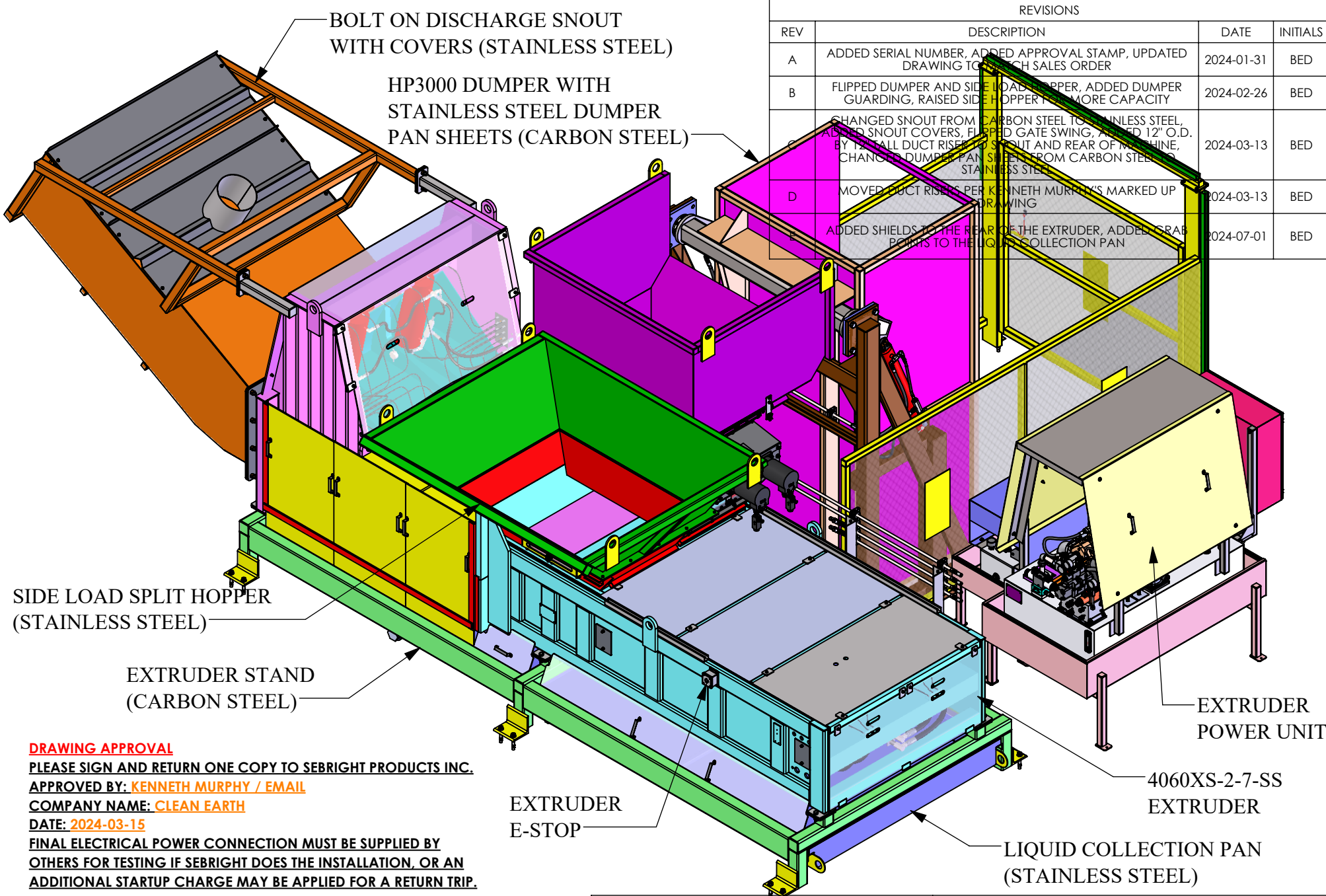
Received, thank you, Ed.

Best,



Indiana Department of Environmental Management
Lindsey Hummel (she/her)
Technical Environmental Specialist
Permits Branch | Office of Land Quality
• (317) 232-7833 • LHummel@idem.IN.gov
Protecting Hoosiers and Our Environment
 | | | | | www.idem.IN.gov





REVISIONS			
REV	DESCRIPTION	DATE	INITIALS
A	ADDED SERIAL NUMBER, ADDED APPROVAL STAMP, UPDATED DRAWING TO MATCH SALES ORDER	2024-01-31	BED
B	FLIPPED DUMPER AND SIDE LOAD HOPPER, ADDED DUMPER GUARDING, RAISED SIDE HOPPER FOR MORE CAPACITY	2024-02-26	BED
C	CHANGED SNOOT FROM CARBON STEEL TO STAINLESS STEEL, ADDED SNOOT COVERS, FLIPPED GATE SWING, ADDED 12" O.D. BY 12" BALL DUCT RISER TO SNOOT AND REAR OF MACHINE, CHANGED DUMPER PAN SHEET FROM CARBON STEEL TO STAINLESS STEEL	2024-03-13	BED
D	MOVED DUCT RISERS PER KENNETH MURPHY'S MARKED UP DRAWING	2024-03-13	BED
E	ADDED SHIELDS TO THE REAR OF THE EXTRUDER, ADDED CRAB POINTS TO THE LIQUID COLLECTION PAN	2024-07-01	BED

SIDE LOAD SPLIT HOPPER (STAINLESS STEEL)

EXTRUDER STAND (CARBON STEEL)

EXTRUDER E-STOP

EXTRUDER POWER UNIT

4060XS-2-7-SS EXTRUDER

LIQUID COLLECTION PAN (STAINLESS STEEL)

DRAWING APPROVAL
 PLEASE SIGN AND RETURN ONE COPY TO SEBRIGHT PRODUCTS INC.
 APPROVED BY: **KENNETH MURPHY / EMAIL**
 COMPANY NAME: **CLEAN EARTH**
 DATE: **2024-03-15**
 FINAL ELECTRICAL POWER CONNECTION MUST BE SUPPLIED BY OTHERS FOR TESTING IF SEBRIGHT DOES THE INSTALLATION, OR AN ADDITIONAL STARTUP CHARGE MAY BE APPLIED FOR A RETURN TRIP.

TITLE: **DIMENSIONAL SALES LAYOUT**

PRINTED DATE AND TIME: 2024-07-01 4:30:24 PM | DATE: 2024-01-31 | REVISION: D | DRAWN BY: BED | SHEET 1 OF 9

DRAWING LEGEND - CONFIDENTIAL
 This drawing is the sole property of Sebright Products Inc., and embodies confidential proprietary information. All rights in this document and in the information contained herein are reserved by Sebright Products Inc. The document is provided for a specific purpose, and the document and the contents thereof may not be reproduced, used or disclosed to others for any other purpose without the express written consent of Sebright Products Inc. and the drawing must be returned to Sebright Products Inc. when the specific purpose is completed.

TOLERANCE (UNLESS SPECIFIED)
 FRACTIONS ± 1/16"
 .XXX ± 0.025"
 ANGLES ± 0°30'

SEBRIGHT PRODUCTS INC.
 127 N. WATER ST. HOPKINS, MI 49328
 PH 269-793-7183 / www.sebrightproducts.com



CUSTOMER NAME: CLEAN EARTH / AKRON, OH.
 WEIGHT (LBS): SCALE: 1:36 | SHEET SIZE: A | DWG #: 13346
 MATERIAL: SER. NO.: 23 12 12817 24 03 12843

HP3000 DUMPER WITH STAINLESS
STEEL DUMPER PAN SHEETS
(CARBON STEEL)

DUMPER GUARDING
(CARBON STEEL)

EXTRUDER
POWER UNIT

PERFORATOR HOPPER
(STAINLESS STEEL)

SIDE LOAD SPLIT HOPPER
(STAINLESS STEEL)

PERFORATOR

LIQUID COLLECTION PAN
(STAINLESS STEEL)

BOLT ON DISCHARGE
SNOUT WITH COVERS
(STAINLESS STEEL)

EXTRUDER STAND
(CARBON STEEL)

SPLASH SHIELDS
(STAINLESS STEEL)

PRINTED DATE AND TIME: 2024-07-01 4:30:24 PM DATE: 2024-01-31 REVISION: D DRAWN BY: BED SHEET 2 OF 9

TITLE:

DIMENSIONAL SALES LAYOUT

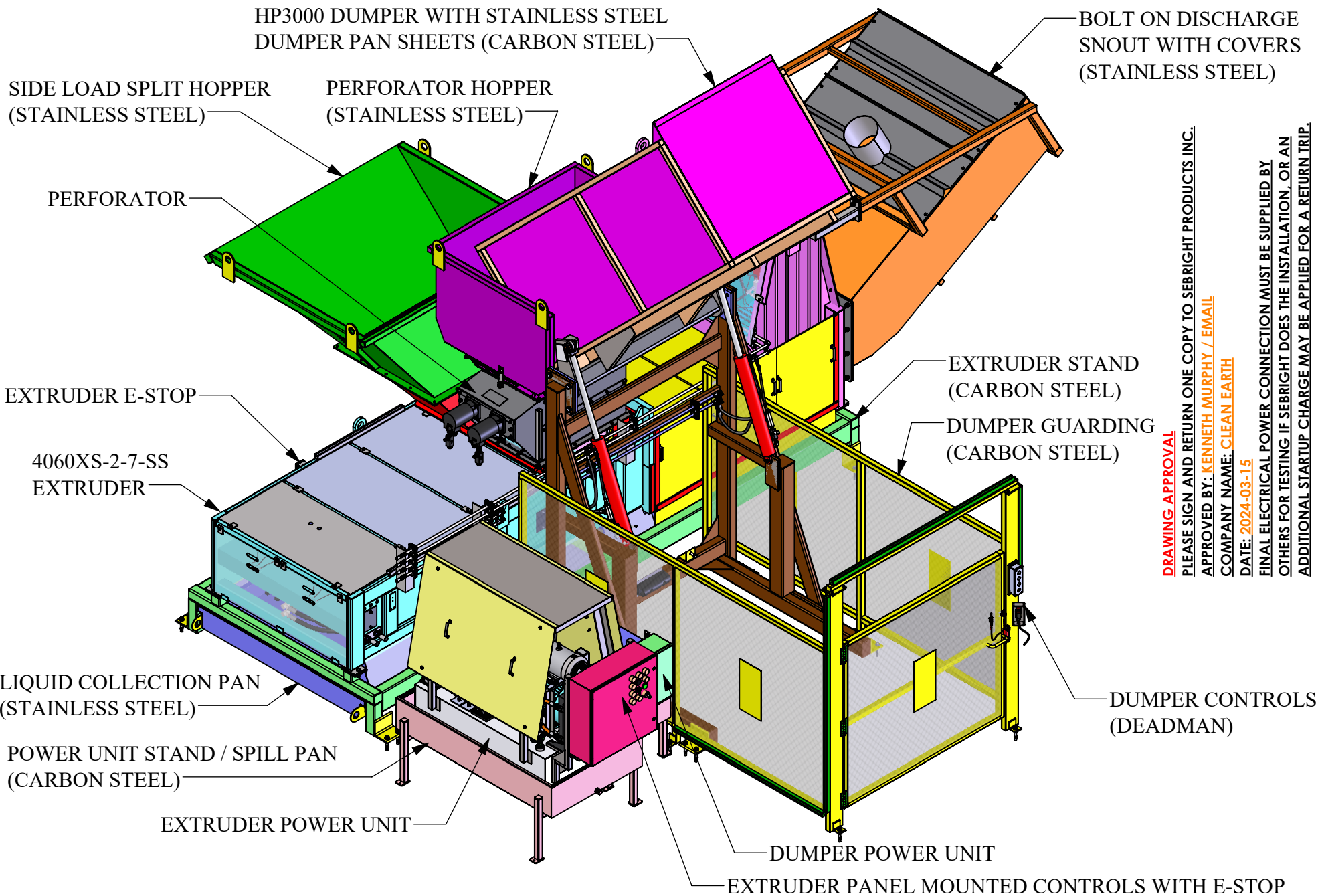
DRAWING LEGEND - CONFIDENTIAL
This drawing is the sole property of Sebright Products Inc., and embodies confidential proprietary information. All rights in this document and in the information contained herein are reserved by Sebright Products Inc. The document is provided for a specific purpose, and the document and the contents thereof may not be reproduced, used or disclosed to others for any other purpose without the express written consent of Sebright Products Inc. and the drawing must be returned to Sebright Products Inc. when the specific purpose is completed.

TOLERANCE
(UNLESS SPECIFIED)
FRACTIONS ± 1/16"
.XXXX ± 0.025"
ANGLES ± 0°30'

SEBRIGHT PRODUCTS INC.
127 N. WATER ST. HOPKINS, MI 49328
PH 269-793-7183 / www.sebrightproducts.com



CUSTOMER NAME: CLEAN EARTH / AKRON, OH.
WEIGHT (LBS): SCALE: 1:36 SHEET SIZE: A DWG #:
MATERIAL: SER. NO.: 23 12 12817 13346
24 03 12843



DRAWING APPROVAL
 PLEASE SIGN AND RETURN ONE COPY TO SEBRIGHT PRODUCTS INC.
 APPROVED BY: **KENNETH MURPHY / EMAIL**
 COMPANY NAME: **CLEAN EARTH**
 DATE: **2024-03-15**
 FINAL ELECTRICAL POWER CONNECTION MUST BE SUPPLIED BY OTHERS FOR TESTING IF SEBRIGHT DOES THE INSTALLATION, OR AN ADDITIONAL STARTUP CHARGE MAY BE APPLIED FOR A RETURN TRIP.

PRINTED DATE AND TIME: 2024-07-01 4:30:24 PM | DATE: 2024-01-31 | REVISION: D | DRAWN BY: BED | SHEET 3 OF 9

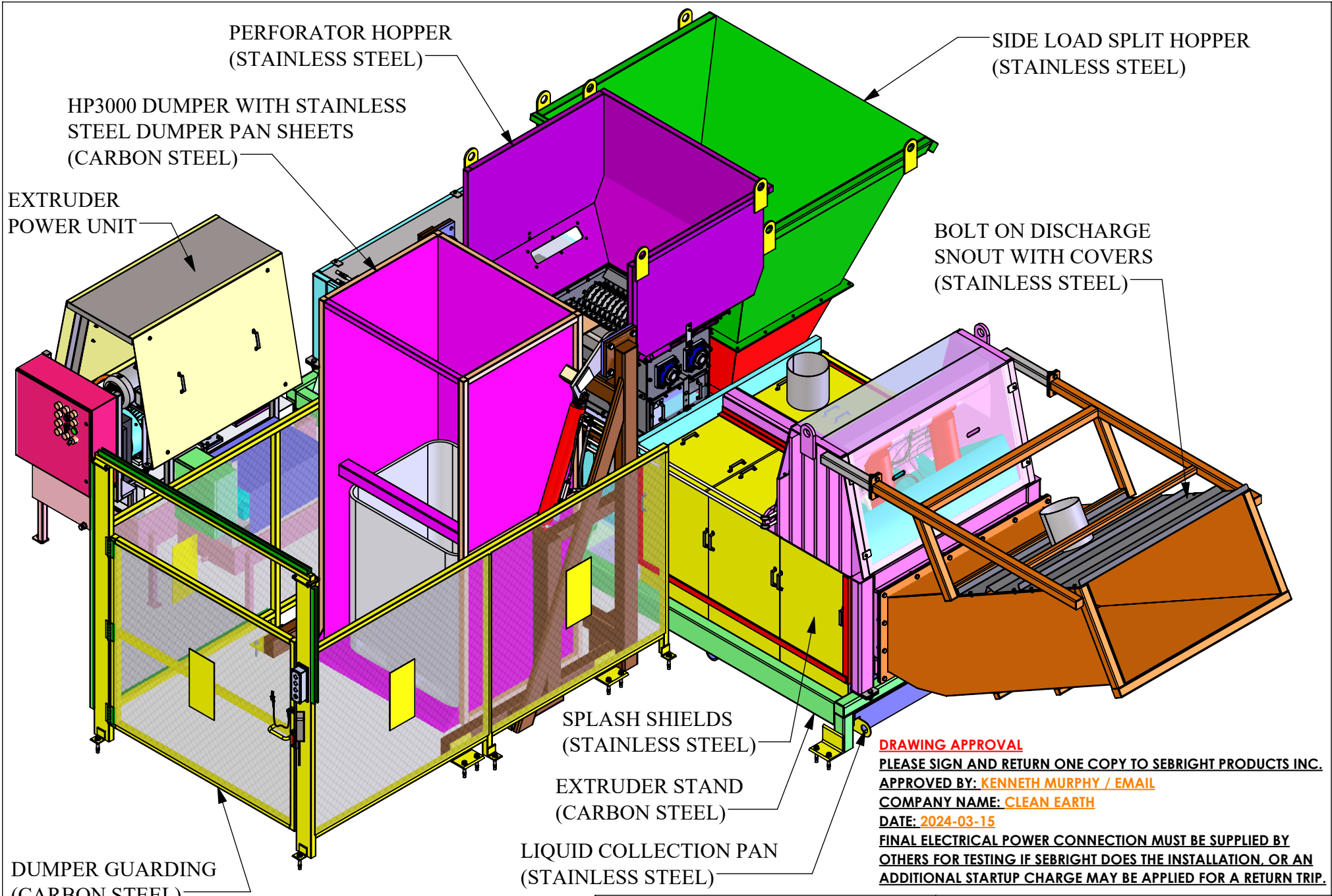
TITLE: **DIMENSIONAL SALES LAYOUT**

DRAWING LEGEND - CONFIDENTIAL
 This drawing is the sole property of Sebright Products Inc., and embodies confidential proprietary information. All rights in this document and in the information contained herein are reserved by Sebright Products Inc. The document is provided for a specific purpose, and the document and the contents thereof may not be reproduced, used or disclosed to others for any other purpose without the express written consent of Sebright Products Inc. and the drawing must be returned to Sebright Products Inc. when the specific purpose is completed.

TOLERANCE (UNLESS SPECIFIED)
 FRACTIONS ± 1/16"
 .XXXX ± 0.025"
 ANGLES ± 0°30"

SEBRIGHT PRODUCTS INC.
 127 N. WATER ST. HOPKINS, MI 49328
 PH 269-793-7183 / www.sebrightproducts.com

CUSTOMER NAME: CLEAN EARTH / AKRON, OH.
 WEIGHT (LBS): SCALE: 1:42 | SHEET SIZE: A | DWG #: 13346
 MATERIAL: SER. NO: 23 12 12817 24 03 12843



DRAWING APPROVAL
 PLEASE SIGN AND RETURN ONE COPY TO SEBRIGHT PRODUCTS INC.
 APPROVED BY: **KENNETH MURPHY / EMAIL**
 COMPANY NAME: **CLEAN EARTH**
 DATE: **2024-03-15**
 FINAL ELECTRICAL POWER CONNECTION MUST BE SUPPLIED BY
 OTHERS FOR TESTING IF SEBRIGHT DOES THE INSTALLATION. OR AN
 ADDITIONAL STARTUP CHARGE MAY BE APPLIED FOR A RETURN TRIP.

PRINTED DATE AND TIME: 2024-07-01 4:30:24 PM	DATE: 2024-01-31	REVISION: D	DRAWN BY: BED	SHEET 4 OF 9	TITLE: DIMENSIONAL SALES LAYOUT
DRAWING LEGEND - CONFIDENTIAL This drawing is the sole property of Sebright Products Inc., and embodies confidential proprietary information. All rights in this document and in the information contained herein are reserved by Sebright Products Inc. The document is provided for a specific purpose, and the document and the contents thereof may not be reproduced, used or disclosed to others for any other purpose without the express written consent of Sebright Products Inc. and the drawing must be returned to Sebright Products Inc. when the specific purpose is completed.					SEBRIGHT PRODUCTS INC. 127 N. WATER ST. HOPKINS, MI 49328 PH 269-793-7183 / www.sebrightproducts.com
TOLERANCE (UNLESS SPECIFIED) FRACTIONS ± 1/16" .XXXV ± .0625" ANGLES ± 0°30"			CUSTOMER NAME: CLEAN EARTH / AKRON, OH. WEIGHT (LBS): SCALE: 1:36 SHEET SIZE: A DWG #: 13346 MATERIAL: SER. NO.: 23 12 12817 24 03 12843		

DRAWING APPROVAL

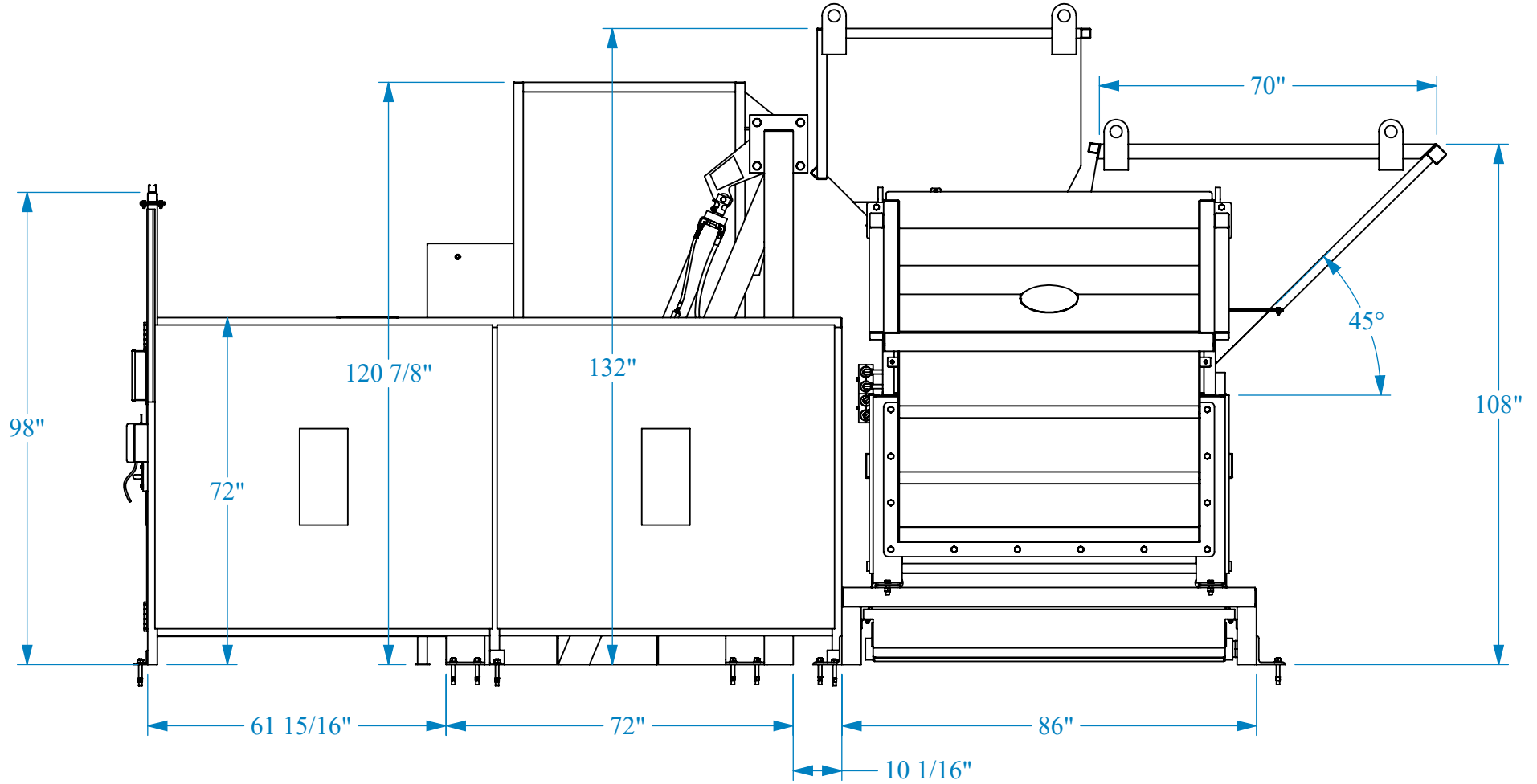
PLEASE SIGN AND RETURN ONE COPY TO SEBRIGHT PRODUCTS INC.

APPROVED BY: KENNETH MURPHY / EMAIL

COMPANY NAME: CLEAN EARTH

DATE: 2024-03-15

FINAL ELECTRICAL POWER CONNECTION MUST BE SUPPLIED BY OTHERS FOR TESTING IF SEBRIGHT DOES THE INSTALLATION, OR AN ADDITIONAL STARTUP CHARGE MAY BE APPLIED FOR A RETURN TRIP.



PRINTED DATE AND TIME: 2024-07-01 4:30:24 PM				DATE: 2024-01-31	REVISION: D	DRAWN BY: BED	SHEET 5 OF 9	TITLE: DIMENSIONAL SALES LAYOUT							
DRAWING LEGEND - CONFIDENTIAL This drawing is the sole property of Sebright Products Inc., and embodies confidential proprietary information. All rights in this document and in the information contained herein are reserved by Sebright Products Inc. The document is provided for a specific purpose, and the document and the contents thereof may not be reproduced, used or disclosed to others for any other purpose without the express written consent of Sebright Products Inc. and the drawing must be returned to Sebright Products Inc. when the specific purpose is completed.								TOLERANCE (UNLESS SPECIFIED) FRACTIONS ± 1/16" .XXXX ± .0625" ANGLES ± 0°30'		SEBRIGHT PRODUCTS INC. 127 N. WATER ST. HOPKINS, MI 49328 PH 269-793-7183 / www.sebrightproducts.com			CUSTOMER NAME: CLEAN EARTH / AKRON, OH. WEIGHT (LBS): SCALE: 1:32 SHEET SIZE: A DWG #: 13346 MATERIAL: SER. NO.: 23 12 12817 24 03 12843		

DRAWING APPROVAL

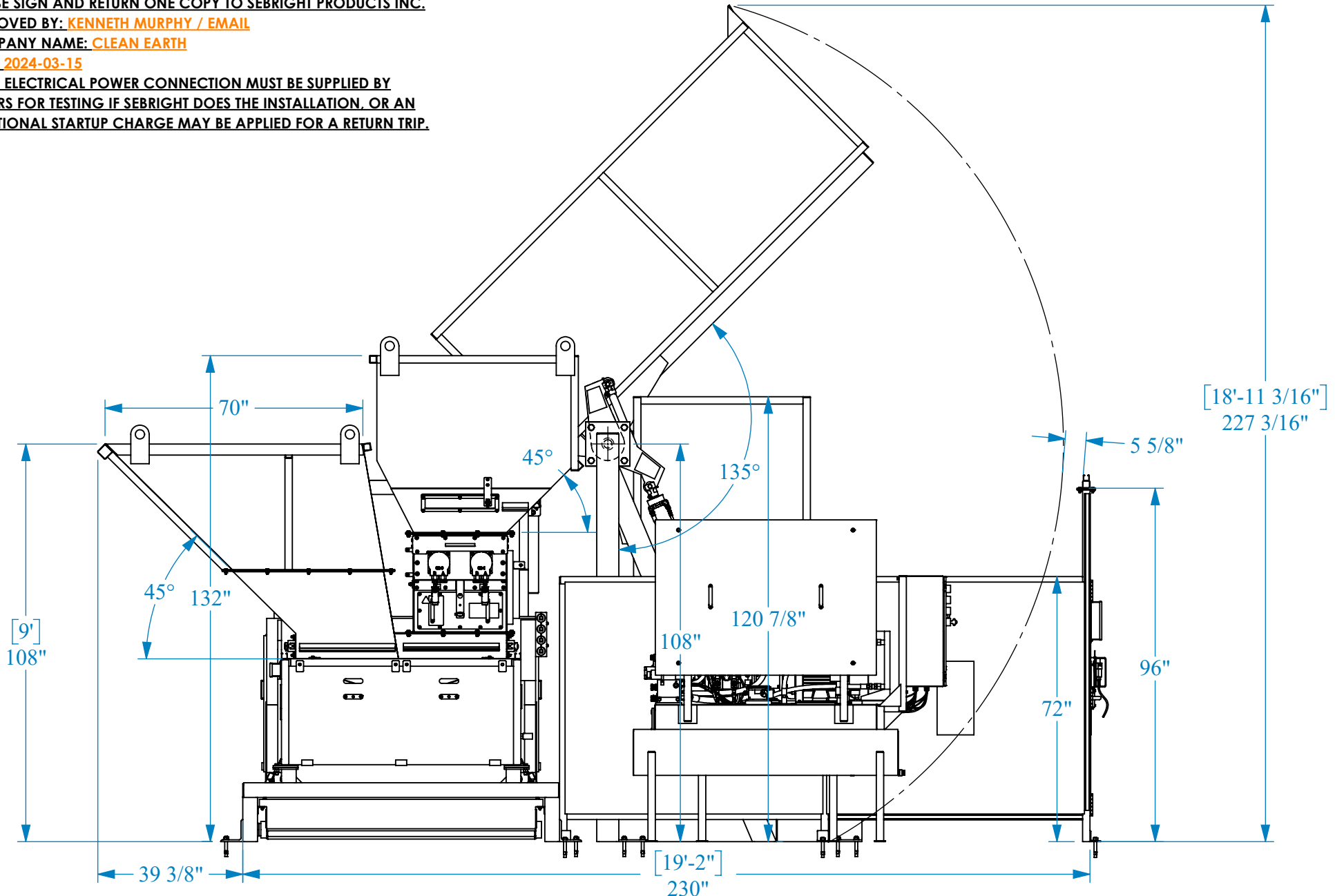
PLEASE SIGN AND RETURN ONE COPY TO SEBRIGHT PRODUCTS INC.


APPROVED BY: **KENNETH MURPHY / EMAIL**

COMPANY NAME: **CLEAN EARTH**

DATE: **2024-03-15**

FINAL ELECTRICAL POWER CONNECTION MUST BE SUPPLIED BY OTHERS FOR TESTING IF SEBRIGHT DOES THE INSTALLATION, OR AN ADDITIONAL STARTUP CHARGE MAY BE APPLIED FOR A RETURN TRIP.



PRINTED DATE AND TIME: 2024-07-01 4:30:24 PM		DATE: 2024-01-31	REVISION: D	DRAWN BY: BED	SHEET 6 OF 9	TITLE: DIMENSIONAL SALES LAYOUT	
DRAWING LEGEND - CONFIDENTIAL						CUSTOMER NAME: CLEAN EARTH / AKRON, OH.	
This drawing is the sole property of Sebright Products Inc., and embodies confidential proprietary information. All rights in this document and in the information contained herein are reserved by Sebright Products Inc. The document is provided for a specific purpose, and the document and the contents thereof may not be reproduced, used or disclosed to others for any other purpose without the express written consent of Sebright Products Inc. and the drawing must be returned to Sebright Products Inc. when the specific purpose is completed.						WEIGHT (LBS):	SCALE: 1:36
TOLERANCE (UNLESS SPECIFIED)						SHEET SIZE: A	DWG #:
FRACTIONS ± 1/16"						MATERIAL:	SER. NO.: 23 12 12817 13346
.XXXV ± .0625"							24 03 12843
ANGLES ± 0°30'							
SEBRIGHT PRODUCTS INC. 127 N. WATER ST. HOPKINS, MI 49328 PH 269-793-7183 / www.sebrightproducts.com							

DRAWING APPROVAL

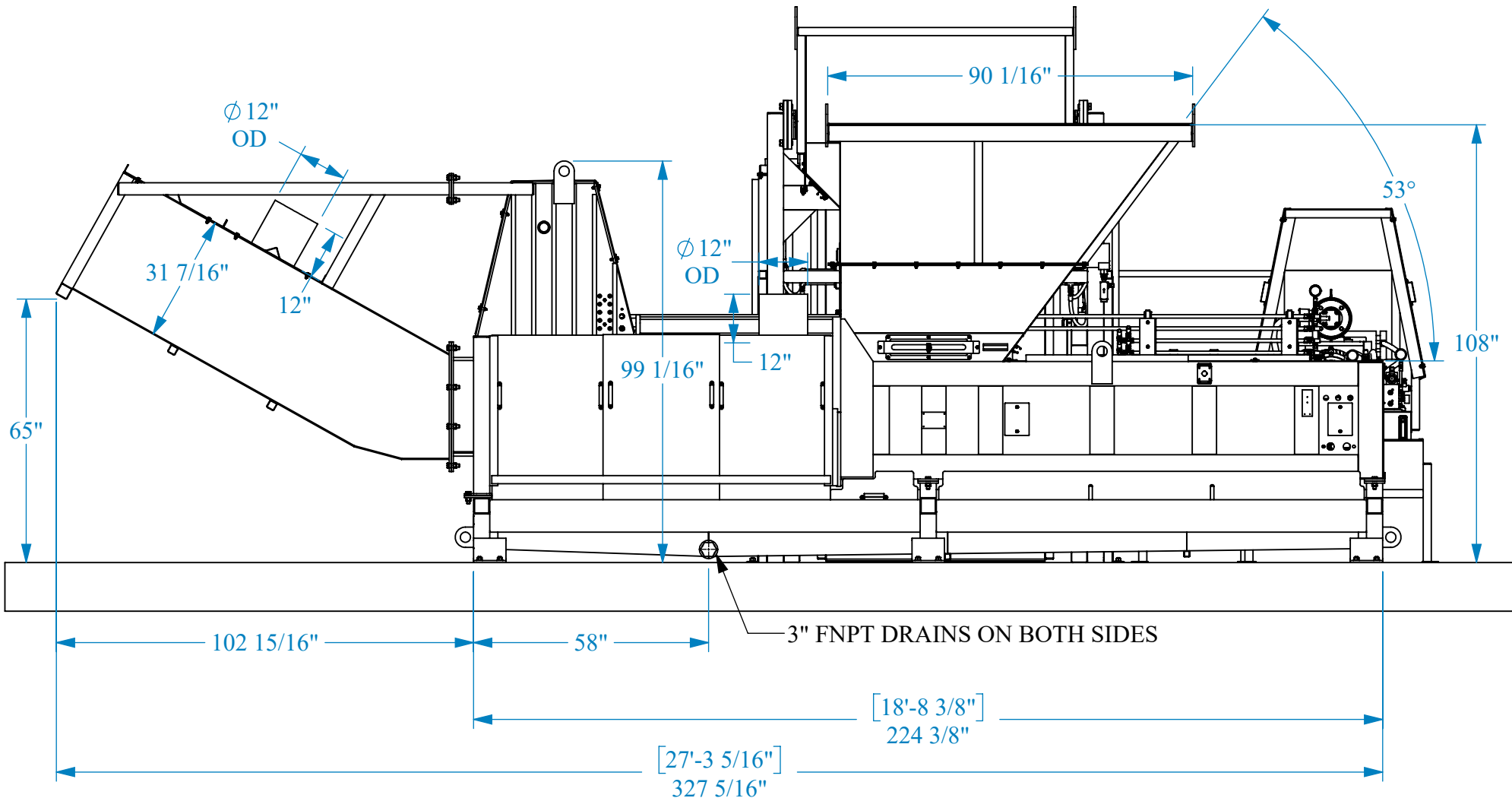
PLEASE SIGN AND RETURN ONE COPY TO SEBRIGHT PRODUCTS INC.

APPROVED BY: KENNETH MURPHY / EMAIL

COMPANY NAME: CLEAN EARTH

DATE: 2024-03-15

FINAL ELECTRICAL POWER CONNECTION MUST BE SUPPLIED BY OTHERS FOR TESTING IF SEBRIGHT DOES THE INSTALLATION, OR AN ADDITIONAL STARTUP CHARGE MAY BE APPLIED FOR A RETURN TRIP.



PRINTED DATE AND TIME: 2024-07-01 4:30:24 PM | DATE: 2024-01-31 | REVISION: D | DRAWN BY: BED | SHEET 7 OF 9

TITLE:

DIMENSIONAL SALES LAYOUT

DRAWING LEGEND - CONFIDENTIAL
This drawing is the sole property of Sebright Products Inc., and embodies confidential proprietary information. All rights in this document and in the information contained herein are reserved by Sebright Products Inc. The document is provided for a specific purpose, and the document and the contents thereof may not be reproduced, used or disclosed to others for any other purpose without the express written consent of Sebright Products Inc. and the drawing must be returned to Sebright Products Inc. when the specific purpose is completed.

TOLERANCE (UNLESS SPECIFIED)
FRACTIONS $\pm 1/16''$
.XXXX $\pm 0.025''$
ANGLES $\pm 0.30^\circ$

SEBRIGHT PRODUCTS INC.
127 N. WATER ST. HOPKINS, MI 49328
PH 269-793-7183 / www.sebrightproducts.com



CUSTOMER NAME: CLEAN EARTH / AKRON, OH.
WEIGHT (LBS): SCALE: 1:36 SHEET SIZE: A DWG #:
MATERIAL: SER. NO.: 23 12 12817 13346
24 03 12843

DRAWING APPROVAL

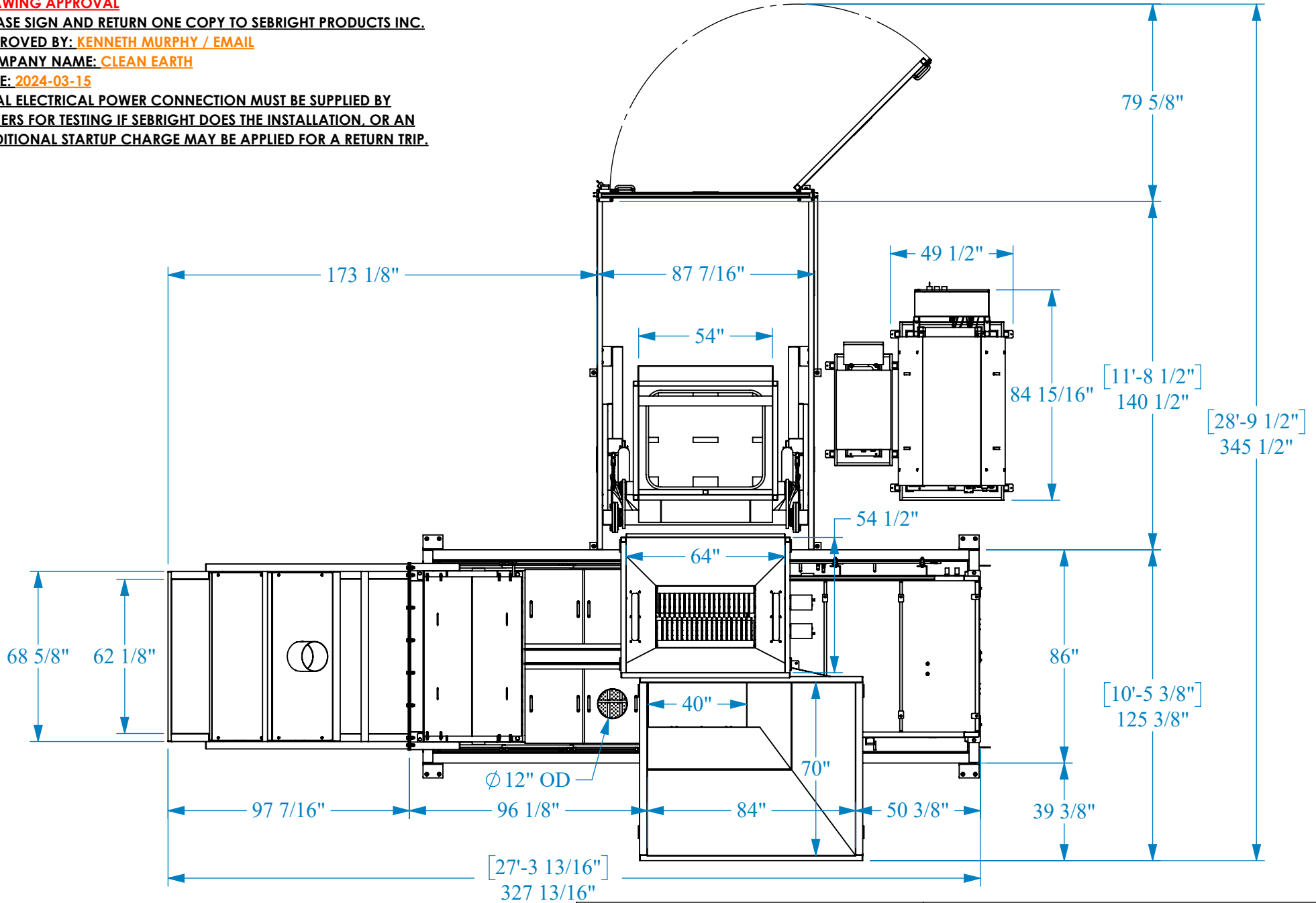
PLEASE SIGN AND RETURN ONE COPY TO SEBRIGHT PRODUCTS INC.

APPROVED BY: **KENNETH MURPHY / EMAIL**

COMPANY NAME: **CLEAN EARTH**

DATE: **2024-03-15**

FINAL ELECTRICAL POWER CONNECTION MUST BE SUPPLIED BY OTHERS FOR TESTING IF SEBRIGHT DOES THE INSTALLATION, OR AN ADDITIONAL STARTUP CHARGE MAY BE APPLIED FOR A RETURN TRIP.



PRINTED DATE AND TIME: 2024-07-01 4:30:24 PM | DATE: 2024-01-31 | REVISION: D | DRAWN BY: BED | SHEET 8 OF 9

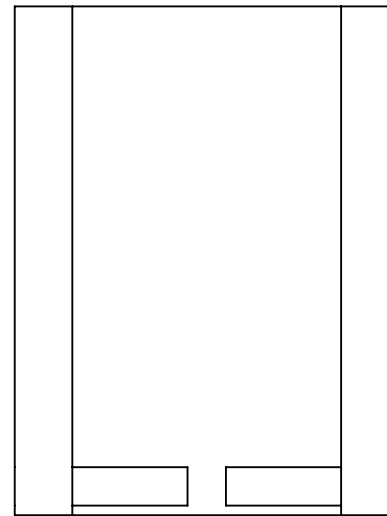
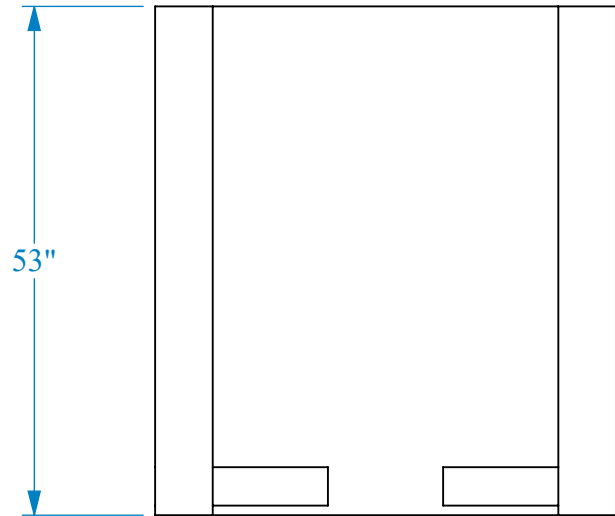
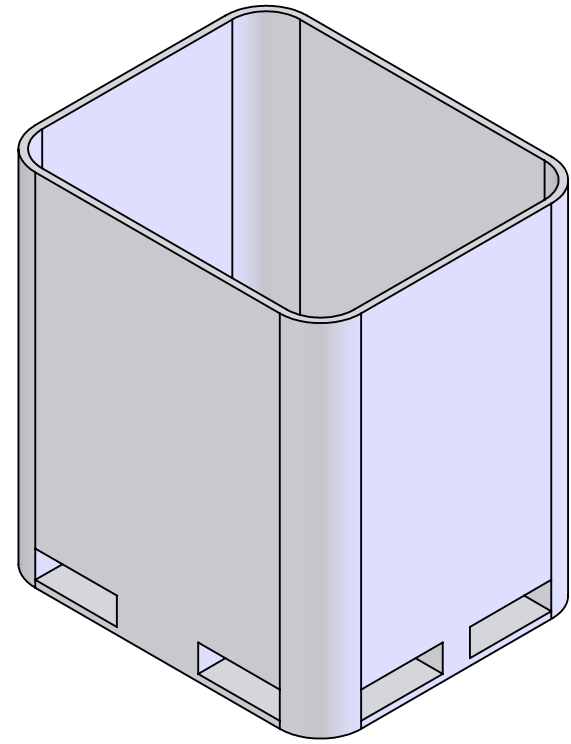
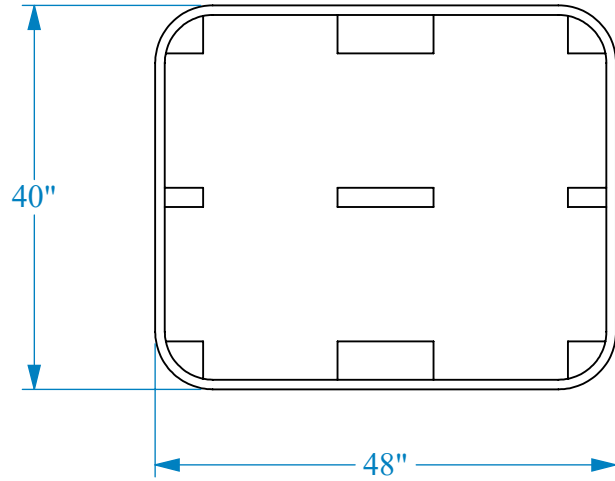
TITLE: **DIMENSIONAL SALES LAYOUT**

DRAWING LEGEND - CONFIDENTIAL
 This drawing is the sole property of Sebright Products Inc., and embodies confidential proprietary information. All rights in this document and in the information contained herein are reserved by Sebright Products Inc. The document is provided for a specific purpose, and the document and the contents thereof may not be reproduced, used or disclosed to others for any other purpose without the express written consent of Sebright Products Inc. and the drawing must be returned to Sebright Products Inc. when the specific purpose is completed.

TOLERANCE (UNLESS SPECIFIED)
 FRACTIONS ± 1/16"
 .XXXV ± 0.025"
 ANGLES ± 0°30'

SEBRIGHT PRODUCTS INC.
 127 N. WATER ST. HOPKINS, MI 49328
 PH 269-793-7183 / www.sebrightproducts.com

CUSTOMER NAME: CLEAN EARTH / AKRON, OH.
 WEIGHT (LBS): SCALE: 1:52 SHEET SIZE: A DWG #:
 MATERIAL: SER. NO.: 23 12 12817 13346
 24 03 12843



PRINTED DATE AND TIME: 2024-07-01 4:30:24 PM | DATE: 2024-01-31 | REVISION: D | DRAWN BY: BED | SHEET 9 OF 9

TITLE: **SITE LAYOUT**

DRAWING LEGEND - CONFIDENTIAL
 This drawing is the sole property of Sebright Products Inc., and embodies confidential proprietary information. All rights in this document and in the information contained herein are reserved by Sebright Products Inc. The document is provided for a specific purpose, and the document and the contents thereof may not be reproduced, used or disclosed to others for any other purpose without the express written consent of Sebright Products Inc. and the drawing must be returned to Sebright Products Inc. when the specific purpose is completed.

TOLERANCE
 (UNLESS SPECIFIED)
 FRACTIONS ± 1/16"
 .XXXV ± 0.025"
 ANGLES ± 0°30'

SEBRIGHT PRODUCTS INC.
 127 N. WATER ST. HOPKINS, MI 49328
 PH 269-793-7183 / www.sebrightproducts.com



CUSTOMER NAME: CLEAN EARTH / AKRON, OH.

WEIGHT (LBS): SCALE: 1:20 SHEET SIZE: A DWG #:

MATERIAL: SER. NO.: 23 12 12817

24 03 12843 **13346**