



County of Hamilton State of Indiana

August 28, 2023

Christine Altman
Commissioner District 1
Steven C. Dillinger
Commissioner District 2
Mark Heirbrandt
Commissioner District 3

Board of Trustees
Hamilton County Regional Utility District
1 North 8th Street, Suite 157
Noblesville, IN 46060

The Hamilton County Board of Commissioners are herewith petitioning the Board of Trustees ("Trustees") for the Hamilton County Regional Utility District to expand the boundaries of the District territory. The general description of the territory ("Territory") to be added includes certain areas outside the District's current boundary, starting at the current District southwest boundary at the intersection of SR 38 and Oak Ridge Road, continuing northwesterly along SR 38 to Spring Mill Road, north along Spring Mill Road to 236th Street, then continuing north along the same line to 256th Street, then west on 256th Street to Six Points Road, then north along Six Points Road to 296th Street and the County Line, then east along 296th Street to Devaney Road, then south along Devaney Road to 236th Street, then west along 236th Street to the intersection of Cammack Road where it meets the current District boundary.

The Board of Commissioners petitions the Trustees to add the Territory to the District for the following reasons:

- a) It is necessary to include the Territory in the District due to an interest from landowner(s) in the District;
- b) Inclusion of the Territory in the District will be conducive to the public health and safety in that the area is currently served by individual wells and septic systems that either have failed or over the course of time will fail and/or need upgrading to meet the anticipated needs in this area; and
- c) It is practical and feasible for the Territory to be included in the District, especially when considering that the Territory is contiguous to the District's current boundaries and can be served by the facilities anticipated to be constructed by the District (as development and the need arises).

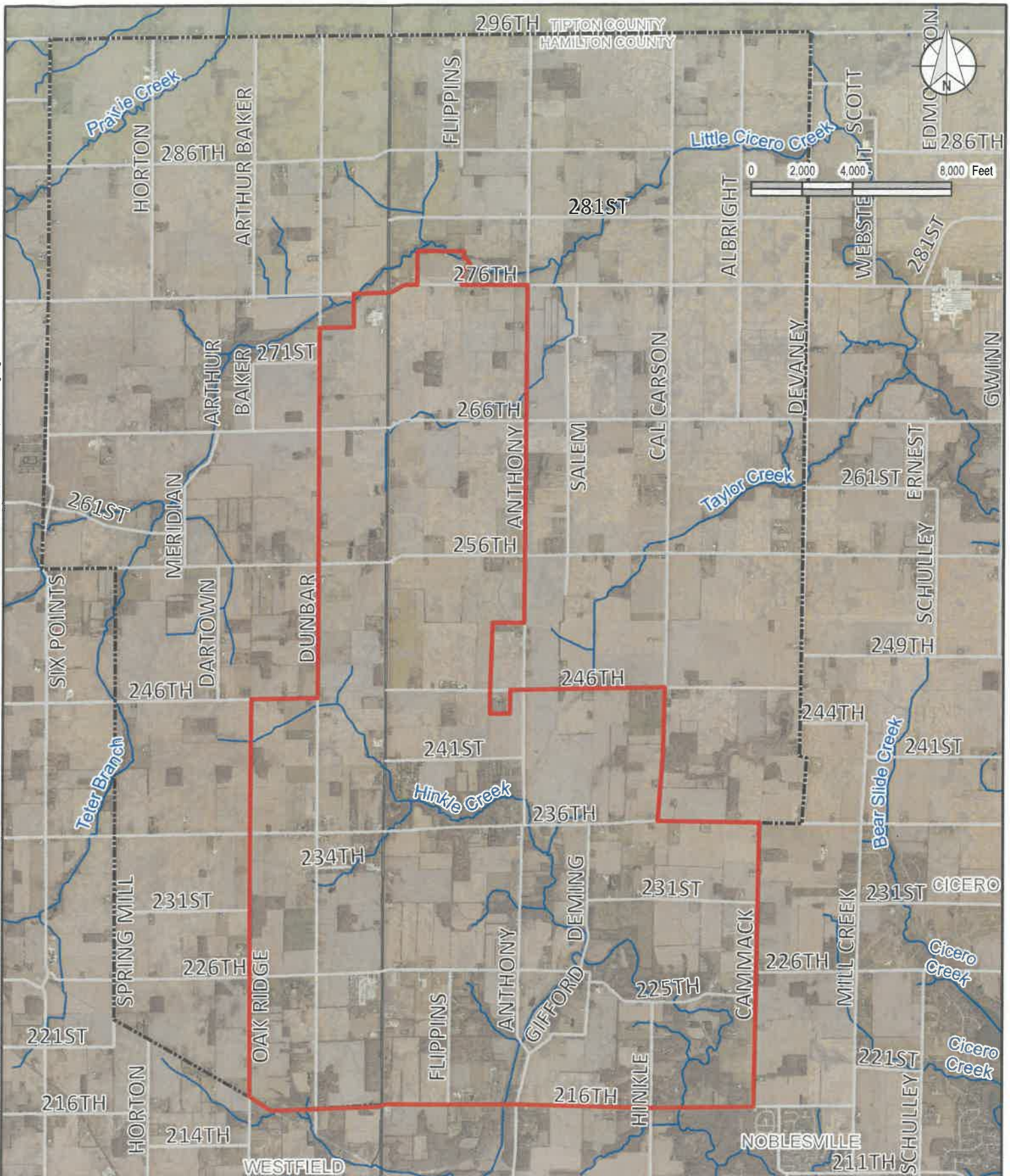
A map depicting the Territory is enclosed with this letter.

Sincerely,

A handwritten signature in black ink, appearing to read "Chris Altman", is written over a horizontal line.

President

Board of Commissioners



Legend

- Street Centerline
- Streams (NHD)
- Hamilton County Regional Utility District Boundary (Initial)
- Future Service Area